

14030

WOODINVILLE

14030 NE 145TH STREET • WOODINVILLE, WA



14030

WOODINVILLE

PROPERTY
Details

BUILDING
Footprint

LOCAL
Amenities

BUILDING HIGHLIGHTS

- 5.8 acres
- 73,238 SF Stand-alone building
- 50,562 SF Whse/Flex space
- 22,676 SF Office/Retail
- 22' - 24' Ceiling height
- Dock High & Grade Level loading
- Approx. 165 parking spaces ($\pm 2.25/1,000$ parking ratio)
- Flexible zoning, allowing for a wide variety of uses

LINKS

- [WOODINVILLE ZONING MAP](#)
- [WOODINVILLE MUNICIPAL CODE](#)



TYLER SLONE • 425.274.4281
slone@broderickgroup.com

ERIC MEUSSNER • 425.274.4282
meussner@broderickgroup.com

PAUL JERUE • 425.646.5223
jerue@broderickgroup.com

The information contained herein has been given to us by the owner or sources that we deem reliable. We have no reason to doubt its accuracy, but we do not guarantee it. Prospective tenants should carefully verify all information contained herein.

14030

WOODINVILLE

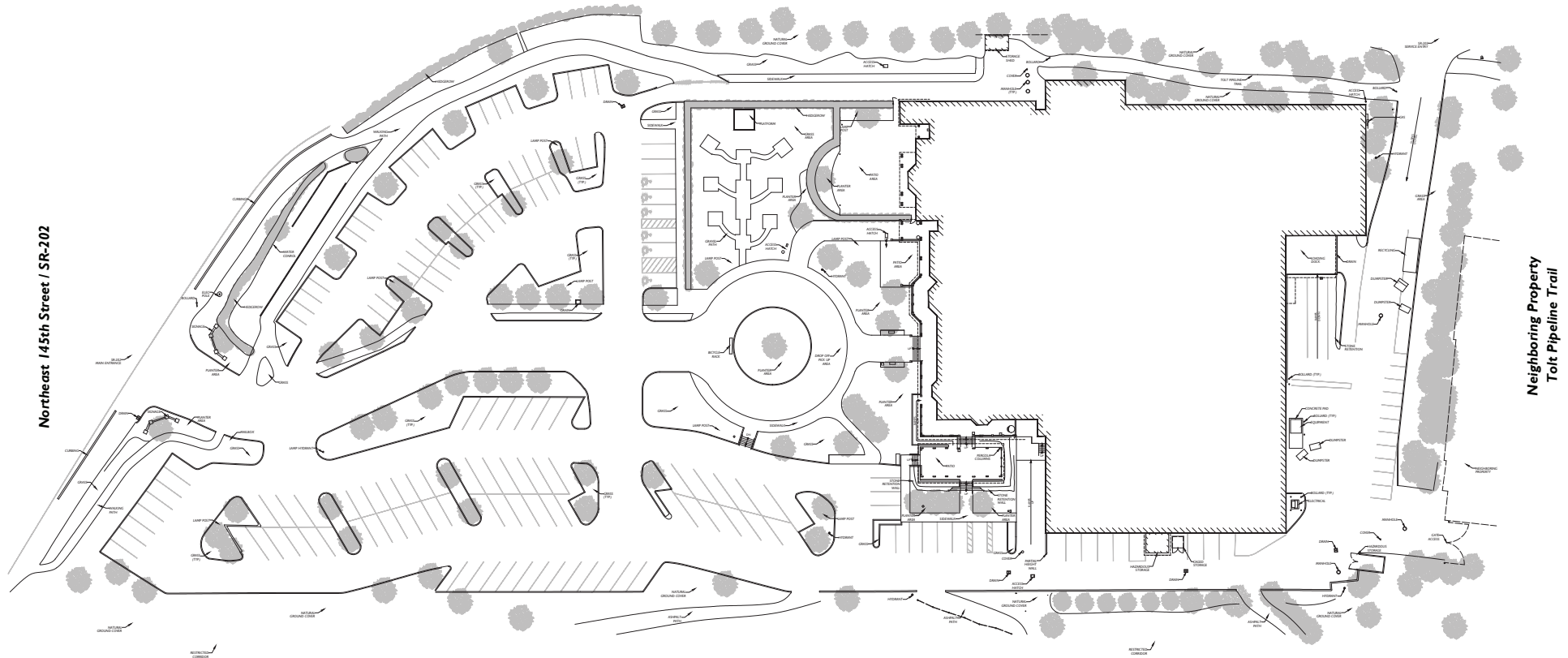
PROPERTY
Details

BUILDING
Footprint

LOCAL
Amenities

SITE PLAN

Redmond-Woodinville Road Northeast / SR-202



Greenspace
Neighboring Property
Sammamish River
Sammamish River Trail



TYLER SLONE • 425.274.4281
slone@broderickgroup.com

ERIC MEUSSNER • 425.274.4282
meussner@broderickgroup.com

PAUL JERUE • 425.646.5223
jerue@broderickgroup.com

The information contained herein has been given to us by the owner or sources that we deem reliable. We have no reason to doubt its accuracy, but we do not guarantee it. Prospective tenants should carefully verify all information contained herein.

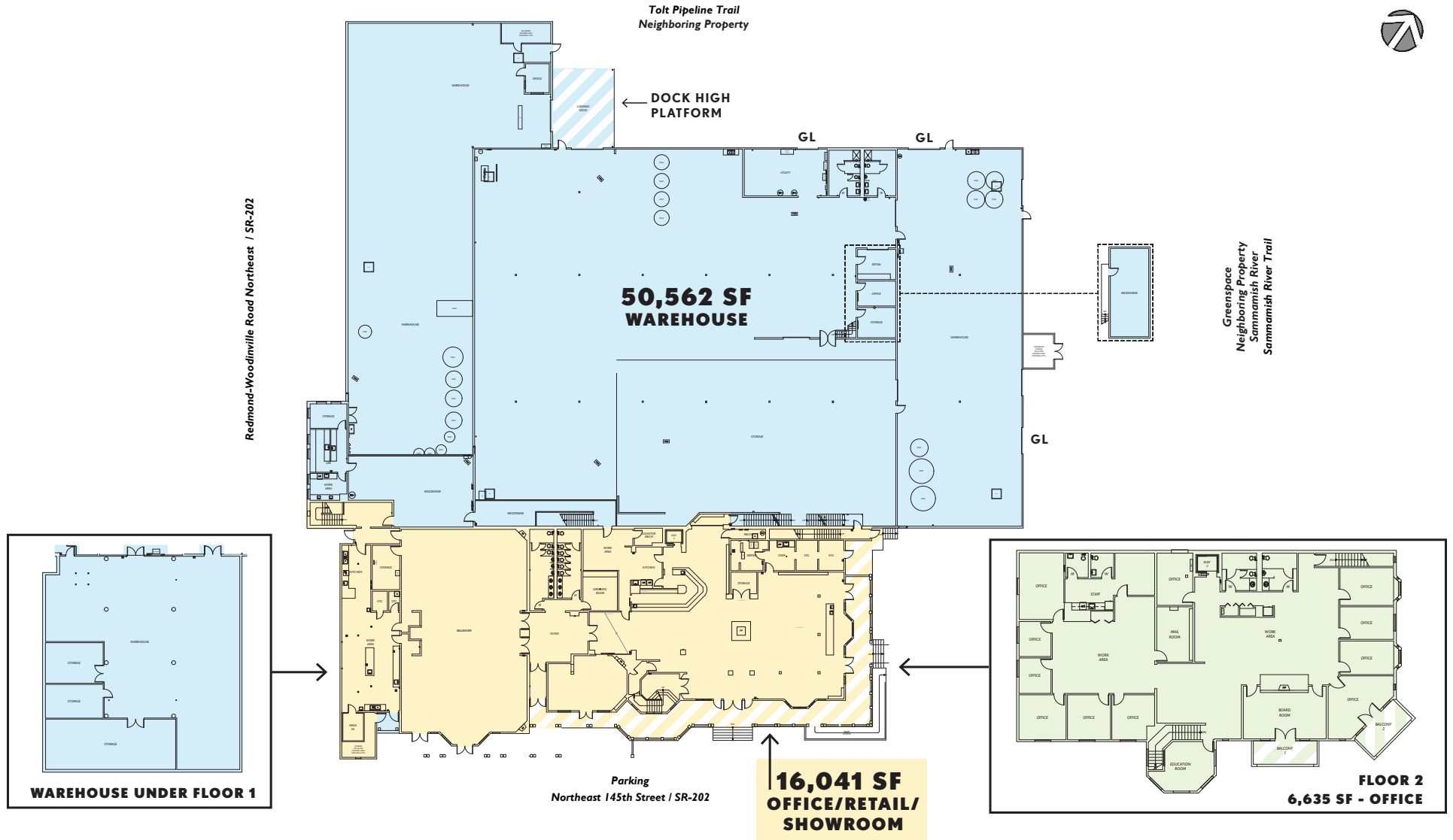
14030

WOODINVILLE

PROPERTY
Details

BUILDING
Footprint

LOCAL
Amenities



TYLER SLONE • 425.274.4281
slone@broderickgroup.com

ERIC MEUSSNER • 425.274.4282
meussner@broderickgroup.com

PAUL JERUE • 425.646.5223
jerue@broderickgroup.com

The information contained herein has been given to us by the owner or sources that we deem reliable. We have no reason to doubt its accuracy, but we do not guarantee it. Prospective tenants should carefully verify all information contained herein.

14030

WOODINVILLE

PROPERTY
Details

BUILDING
Footprint

LOCAL
Amenities

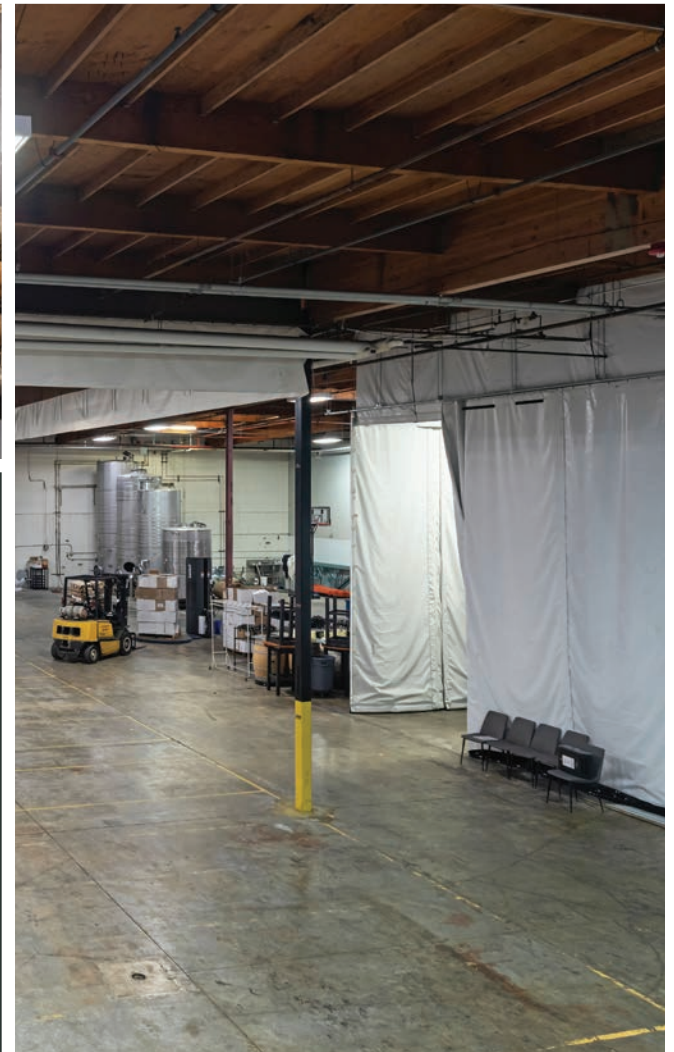


TYLER SLONE • 425.274.4281
slone@broderickgroup.com

ERIC MEUSSNER • 425.274.4282
meussner@broderickgroup.com

PAUL JERUE • 425.646.5223
jerue@broderickgroup.com

The information contained herein has been given to us by the owner or sources that we deem reliable. We have no reason to doubt its accuracy, but we do not guarantee it. Prospective tenants should carefully verify all information contained herein.



14030

WOODINVILLE

14030 NE 145TH STREET • WOODINVILLE, WA

BRODERICK
• GROUP •

TYLER SLONE
425.274.4281

ERIC MEUSSNER
425.274.4282

PAUL JERUE
425.646.5223

