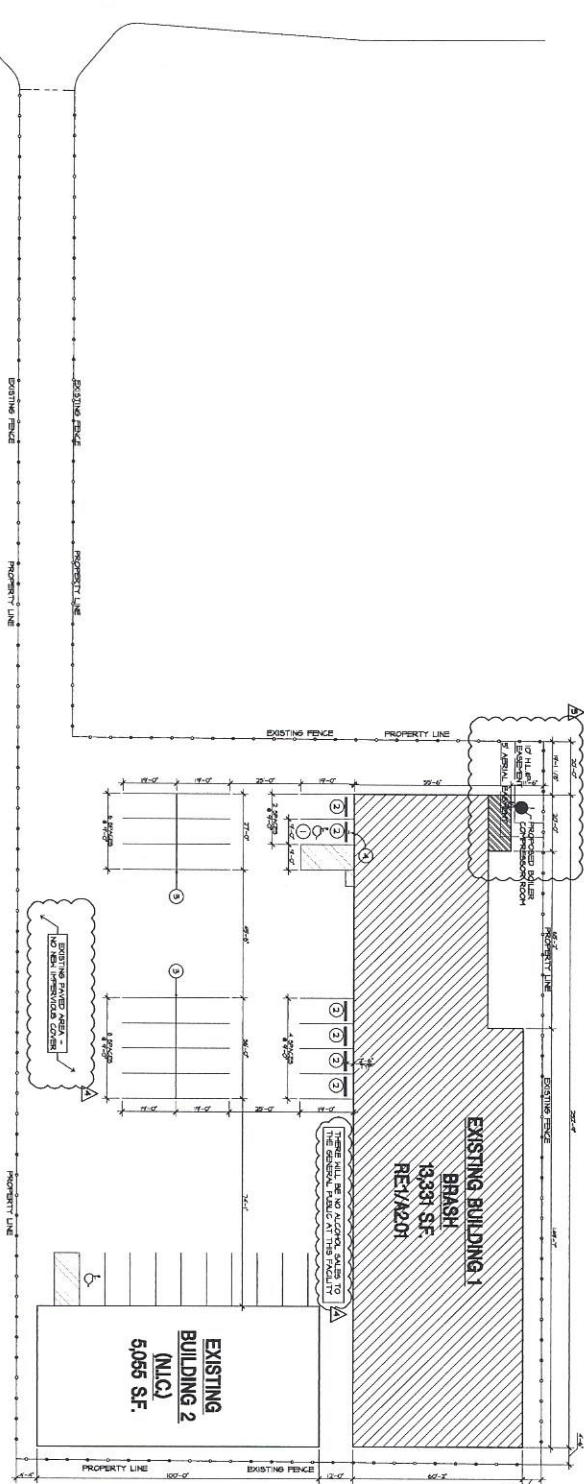


ARCHITECTURAL SITE PLAN

W CROSSTIMBERS ST



1" = 30'-0"



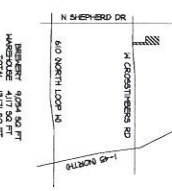
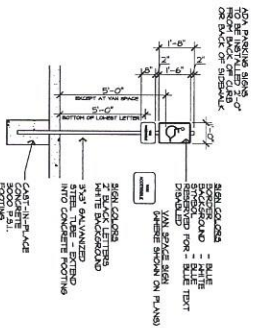
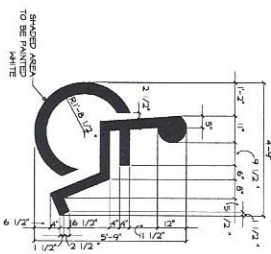
- KEY NOTES**
1. PROVIDE NEW ADA PARKING SPACES AND VAN LOADING ZONE WHERE SHOWN
 2. PROVIDE NEW PARKING CURB STOPS IN LOCATIONS SHOWN - SPACES ARE NOTED
 3. STRIP NEW RAMP PARKING SPACES ON EXISTING PAVING AS SHOWN
 4. REMOVE NEW ADA PARKING SPACES WHERE SHOWN - RE: (A) (1)

6 KEY NOTES

5 PARKING DETAILS 1/4" = 1'-0"

4 ADA PARKING SIGN 3/8" = 1'-0"

3 PARKING CALCULATIONS 1/2" = 1'-0"



PARKING CALCULATIONS - BRASH

MINIMUM REQUIRED SPACES - 11 SPACES
EXISTING SPACES - 7 SPACES
ADDITIONAL SPACES REQUIRED - 4 SPACES
TOTAL REQUIRED SPACES - 15 SPACES

PARKING CALCULATIONS - ALU

MINIMUM REQUIRED SPACES - 5 SPACES
EXISTING SPACES - 3 SPACES
ADDITIONAL SPACES REQUIRED - 2 SPACES
TOTAL REQUIRED SPACES - 7 SPACES

BRASH INTERIOR REMODEL
 510 W CROSSTIMBERS ST
 HOUSTON, TX 77056

SHEET: **BRASH SITE PLAN AND NOTES**

DATE: 1/15/2014

PROJECT: **BRASH INTERIOR REMODEL**

PROJ. NO.: **31183900**

DATE: 1/15/2014

SCALE: **AS SHOWN**

BY: **3SD**

CHECKED: **3SD**

APPROVED: **3SD**

THREE SQUARE DESIGN GROUP
 2444 Thoma Blvd., Suite 202 Houston, TX 77056
 Phone: 713.662.9666 Fax: 713.662.9668
 www.threesquaredesign.com

DATE: 1/15/2014

PROJECT: **BRASH INTERIOR REMODEL**

PROJ. NO.: **31183900**

DATE: 1/15/2014

SCALE: **AS SHOWN**

BY: **3SD**

CHECKED: **3SD**

APPROVED: **3SD**