

PRICE REDUCTION



4.116 Acres

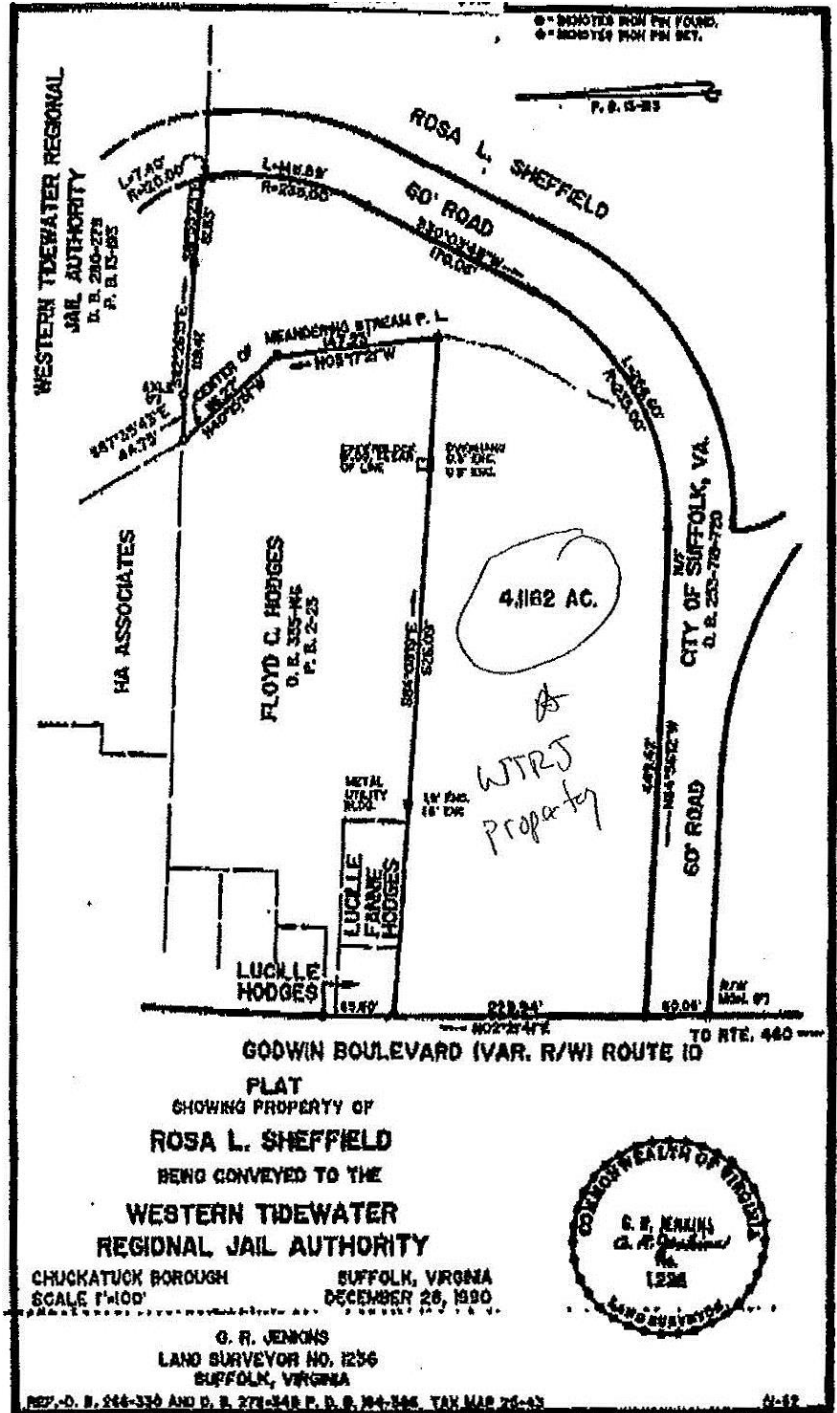
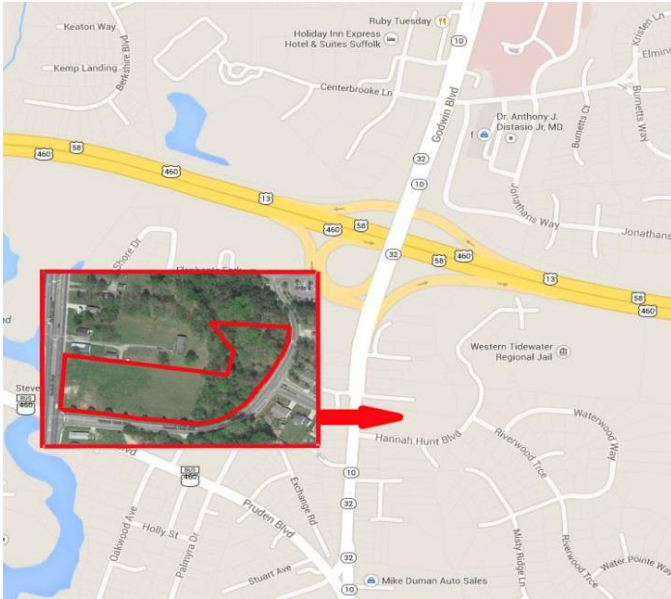
For more information, contact:

GARDNER KING
Senior Associate
757 213 4154
gardner.king@thalhimer.com

The Town Center of Virginia Beach
222 Central Park Ave., Suite 1820
Virginia Beach, VA 23462
www.thalhimer.com

Independently Owned and Operated / A Member of the Cushman & Wakefield Alliance

Cushman & Wakefield | Thalhimer © 2015. No warranty or representation, express or implied, is made to the accuracy or completeness of the information contained herein, and same is submitted subject to errors, omissions, change of price, rental or other conditions, withdrawal without notice, and to any special listing conditions imposed by the property owner(s). As applicable, we make no representation as to the condition of the property (or properties) in question.



Property Features

- 4.116 acres
- ± 230 linear feet fronting Godwin Boulevard
- Corner lot on Godwin Boulevard & Hannah Hunt Boulevard
- Excellent commercial lot for retail development
- Zoned RLM
- All utilities
- **Price reduced: \$630,000 \$550,000**

For more information, contact:

GARDNER KING
 Senior Associate
 757 213 4154
 gardner.king@thalhimer.com

The Town Center of Virginia Beach
 222 Central Park Ave., Suite 1820
 Virginia Beach, VA 23462
 www.thalhimer.com