

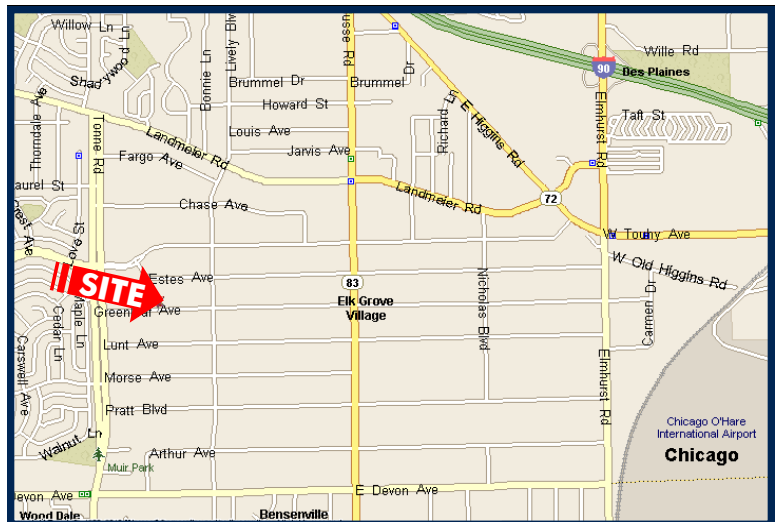
AVAILABLE FOR LEASE

870-880 GREENLEAF AVENUE, ELK GROVE VILLAGE, ILLINOIS



BUILDING SPECIFICATIONS

| | |
|-------------------------|--|
| BUILDING SIZE: | +/- 34,500 SF |
| AVAILABLE SPACE: | +/- 21,000 SF <i>(divisible to 10,500 SF)</i> |
| CEILING HEIGHT: | 16' clear |
| LOADING: | 2 exterior docks 2 drive-in doors |
| POWER: | 200 amps |
| LEASE RATE: | \$8.50 |



FEATURES

- Excellent O'Hare location
- Newly updated office space
- Great loading

**FOR ADDITIONAL
INFORMATION,
PLEASE CONTACT:**

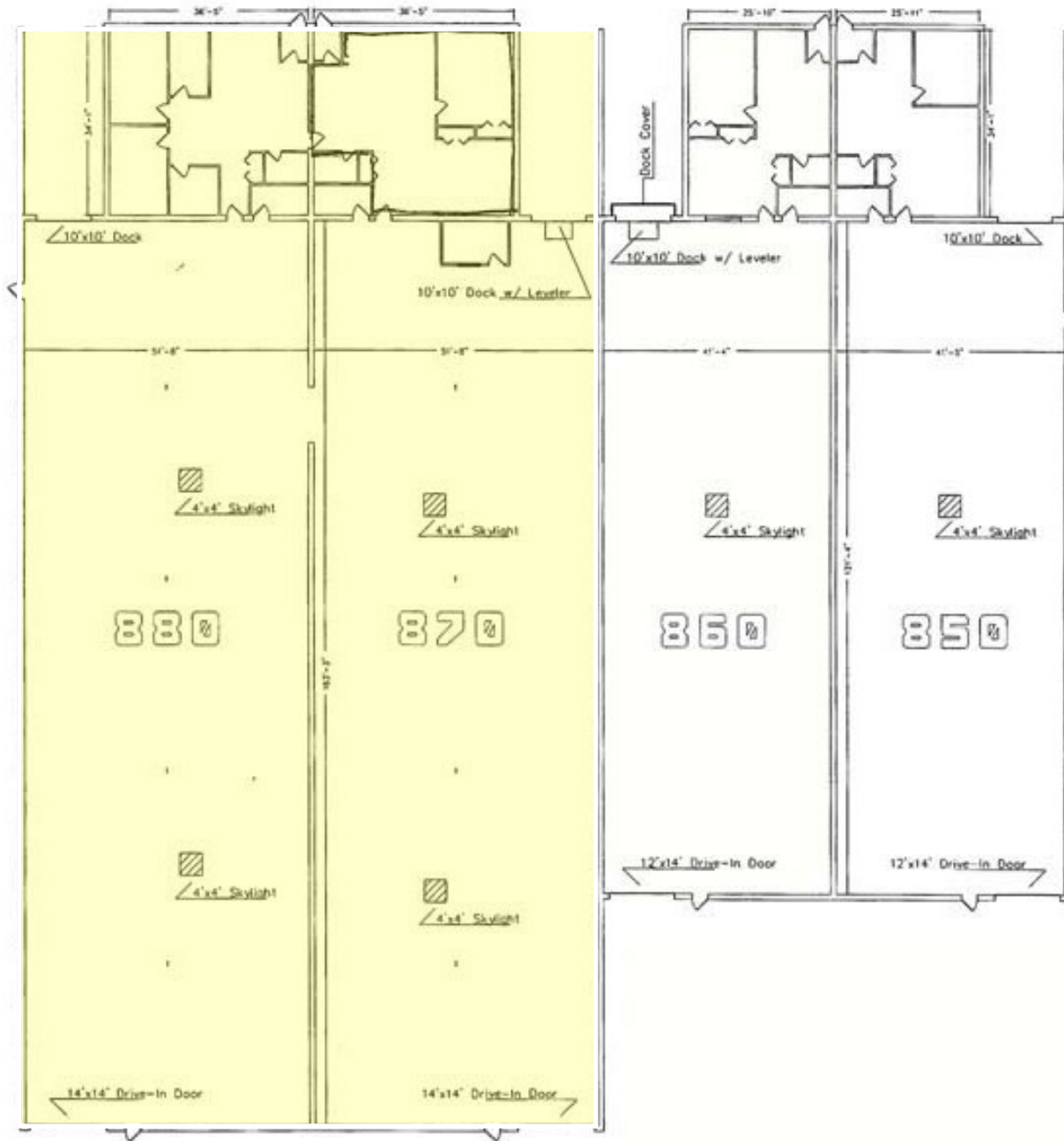
MANDY LEWANDOWSKI

Associate

mandy@darwinrealty.com

AVAILABLE FOR LEASE

870-880 GREENLEAF AVENUE, ELK GROVE VILLAGE, ILLINOIS



**FOR ADDITIONAL
INFORMATION,
PLEASE CONTACT:**

MANDY LEWANDOWSKI

Associate

mandy@darwinrealty.com