



4TH AND PARK TOWER

700 S 4th Street | Minneapolis, MN 55415

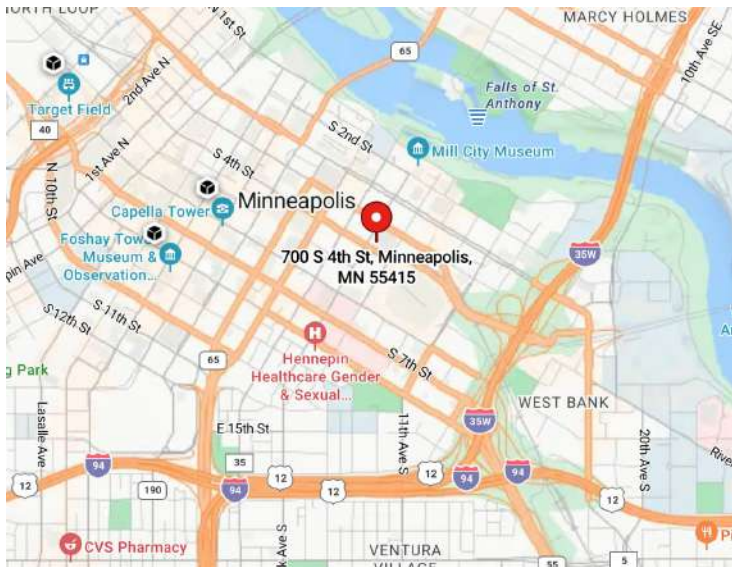
Street Level Retail Space For Lease

Space Available: 1,345 sf

- 2024 CAM/Tax: \$13.00 psf
- Lease Rate: Negotiable

Highlights and Features:

- New development
- Residential tower- 25-story, 350-unit
- Dense housing population
- Nearby Light Rail Station
- Covered Parking: 100 spaces
- Parking Ramp (Fleet Farm): 1,610 parking stalls
- Access to CBD Skyway
- Neighboring tenant: US Bank Stadium (home of Minnesota Vikings), The Armory (8,400-person music & events venue), The Commons (4.2-acre public green space) Trader Joe's, Mill City Museum, Guthrie Theater, The Depot Minneapolis, Bar Zia, Crooked Pint Ale House, Subway, Caribou Coffee, Off the Rails, Sawatdee Thai, OUI Bar & Kitchen, Jimmy John's, and more



Demographics and Traffic Counts:

- Average Household Population: 1 mile - 14,968, 3 miles - 155,222, and 5 miles - 319,999
- Average Daytime Population: 1 mile - 67,525, 3 miles - 149,356, and 5 miles - 212,772
- Average Household Income: 1 mile - \$59,607, 3 miles - \$47,539, and 5 miles - \$57,120
- S 4th St - 4,004 vpd, 5th Avenue S - 6,921 vpd, Portland Avenue - 3,994 vpd, and S 33rd St - 7,491 vpd



Christianson & Company
 COMMERCIAL REAL ESTATE SERVICES
www.SpaceAvailableMN.com



MARY LINDELL

612.747.9854

mary@christiansonandco.com

LISA CHRISTIANSON

952.393.1212

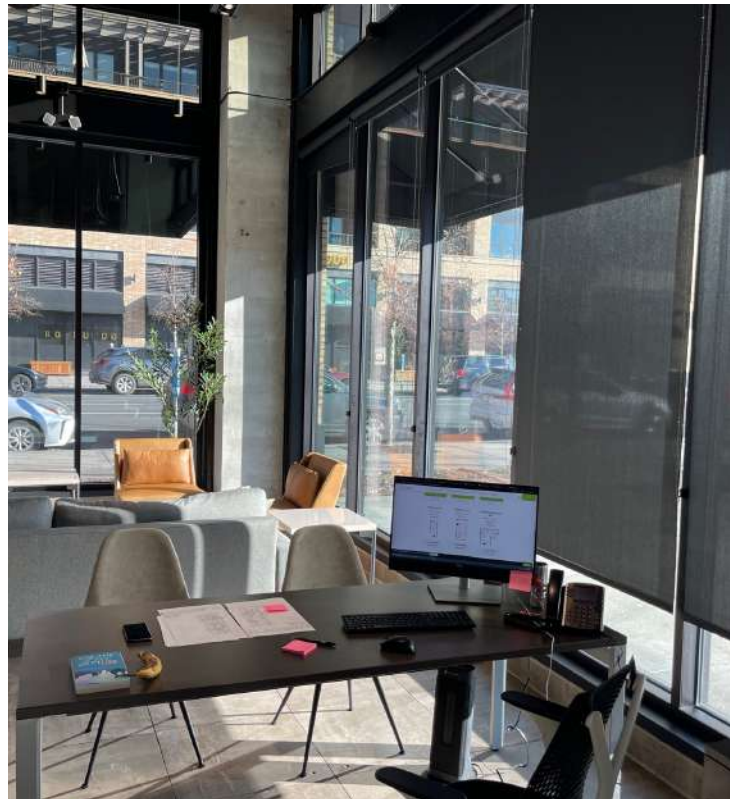
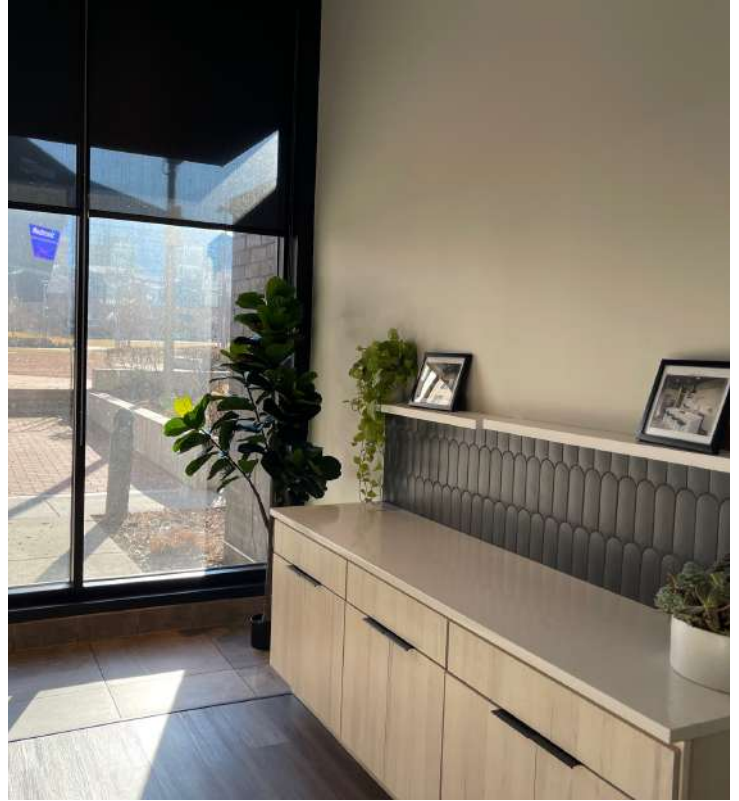
lisa@christiansonandco.com

This information is accurate as of the date of printing and is subject to change without notice. All information is deemed accurate, but cannot be guaranteed.

www.SpaceAvailableMN.com

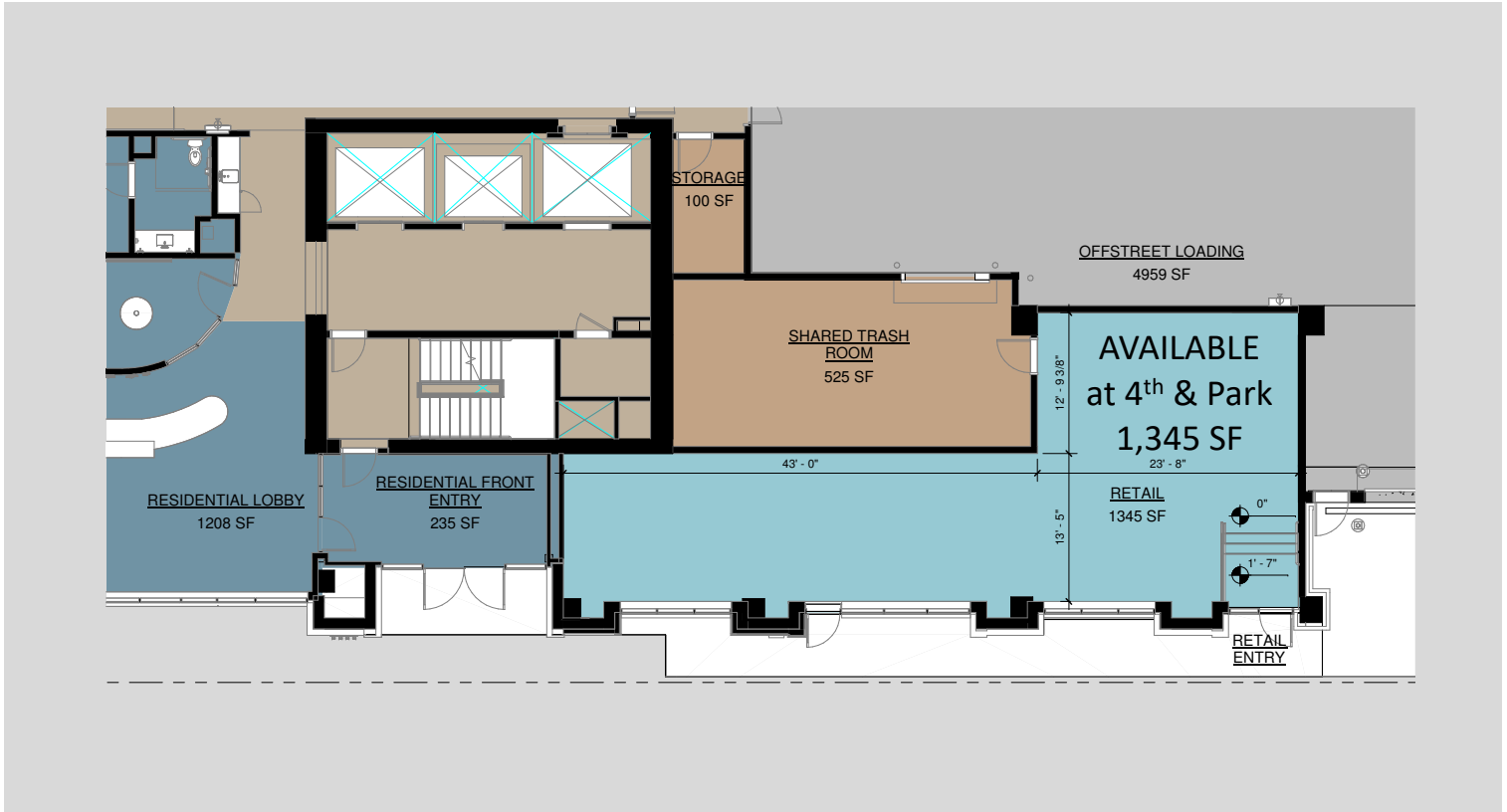
info@SpaceAvailableMN.com | 952.921.5844

Interior Photos



This information is accurate as of the date of printing and is subject to change without notice. All information is deemed accurate, but cannot be guaranteed.

Floor Plan



Aerial



This information is accurate as of the date of printing and is subject to change without notice. All information is deemed accurate, but cannot be guaranteed.