

# ONE LOGAN SQUARE

18TH STREET & CHERRY STREET, PHILADELPHIA, PA

±2,520 SF AVAILABLE FOR LEASE



## property highlights.

- Premiere outdoor seating available!
- Prime corner retail space in the heart of the renowned Logan Square neighborhood
- Approximately 20,000 office workers on the same block and 50,000 office workers within walking distance
- Down the street from Comcast's existing World Headquarters, as well as Comcast's new Technology Center (2.7 million SF total and approximately 10,000 employees)
- Nearby occupancy rates for residential and office towers all above 95%
- Area Retail Tenants include Saxby's, Zushi, Matt & Marie's, and Kayu, Vernick Fish, Vernick Cafe, Jean George
- Book ended by two of the city's newest hotels: Four Seasons and The Logan

## stats.

2018 DEMOGRAPHICS*	.25 MILES	.5 MILES	1 MILE
EST. POPULATION	2,507	12,063	49,505
EST. HOUSEHOLDS	1,650	6,602	26,264
EST. AVG. HH INCOME	\$122,328	\$120,518	\$110,972

\*ESRI 2018



**METRO**<sup>®</sup>  
COMMERCIAL  
REAL ESTATE, INC.

MetroCommercial.com | PHILADELPHIA, PA | PLYMOUTH MEETING, PA | MOUNT LAUREL, NJ | NAPLES, FL

## get in touch.

**JONATHAN SPOERL**

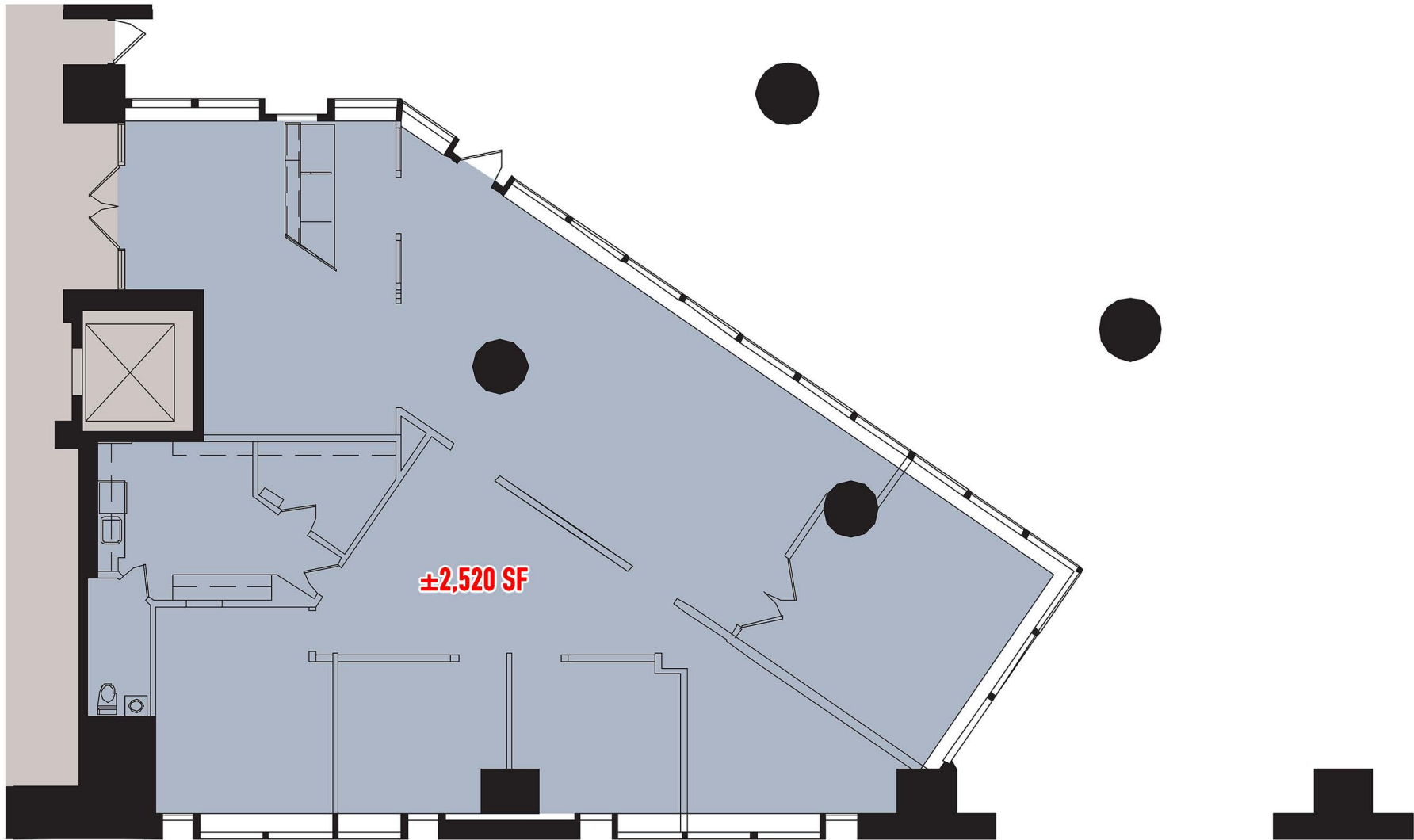
office 215.893.0300  
direct 215.282.0157  
jspoerl@metrocommercial.com

**SCOTT BENSON**

office 215.893.0300  
direct 215.282.0158  
sbenson@metrocommercial.com

**MICHAEL GORMAN**

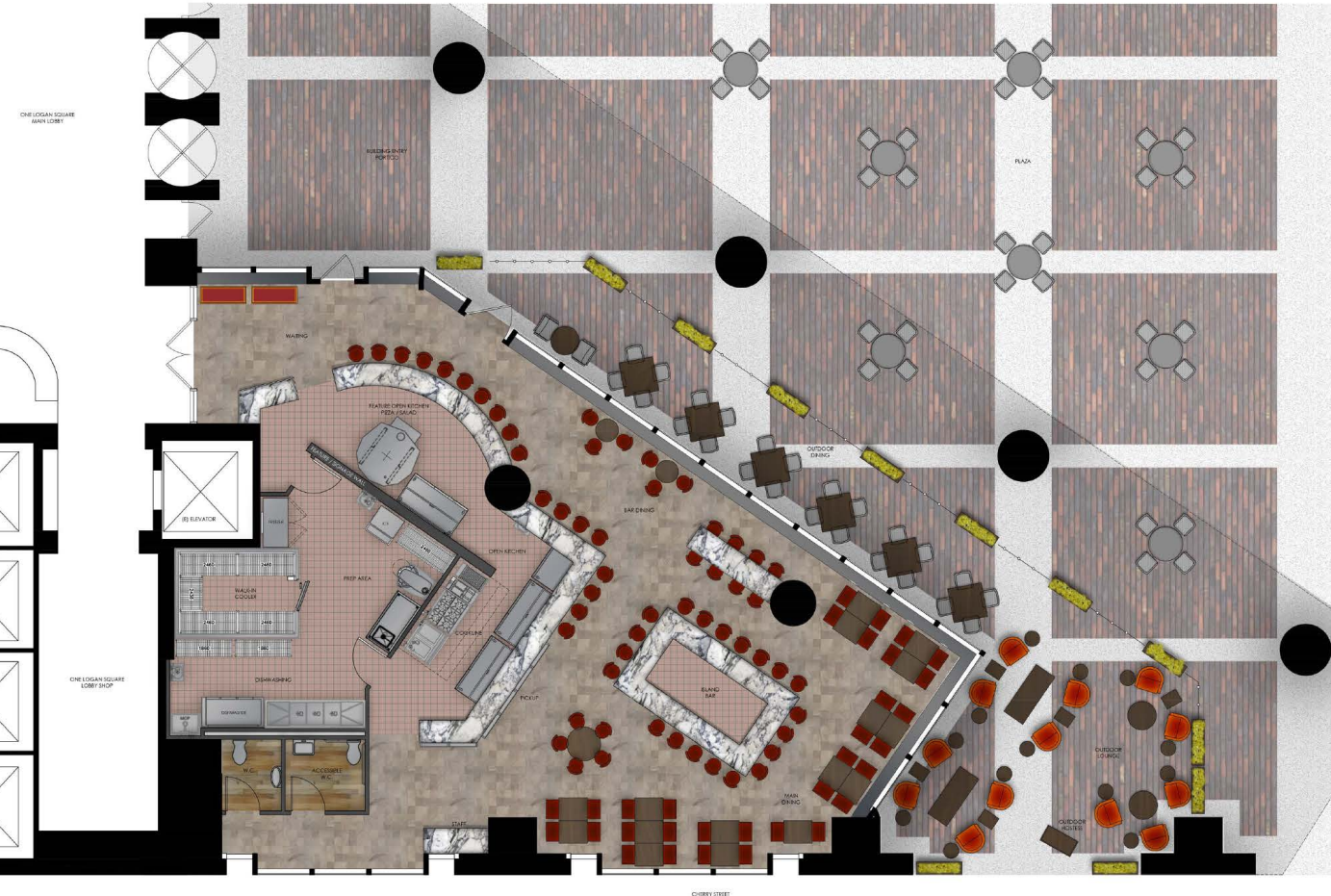
office 215.893.0300  
direct 215.282.0152  
mgorman@metrocommercial.com



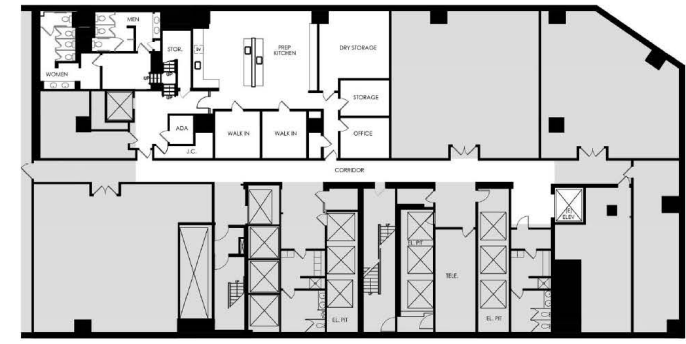
The information and images contained herein are from sources deemed reliable. However, Metro Commercial Real Estate, Inc. makes no representation whatsoever as to their accuracy or authenticity. Images shown may be modified for illustrative purposes. Images may be out-of-date and not current. 10.14.19

ONE LOGAN SQUARE





INDOOR SEATING	
AREA	NO.
BAR	20
BAR DINING (HIGH TOPS)	37
MAIN DINING (LOW TOPS)	32
<b>INDOOR SUBTOTAL: 89</b>	
OUTDOOR SEATING	
AREA	NO.
OUTDOOR DINING	26
OUTDOOR LOUNGE	13
<b>OUTDOOR SUBTOTAL: 39</b>	
<b>TOTAL SEATING</b>	<b>128</b>



The information and images contained herein are from sources deemed reliable. However, Metro Commercial Real Estate, Inc. makes no representation whatsoever as to their accuracy or authenticity. Images shown may be modified for illustrative purposes. Images may be out-of-date and not current. 10.14.19



The information and images contained herein are from sources deemed reliable. However, Metro Commercial Real Estate, Inc. makes no representation whatsoever as to their accuracy or authenticity. Images shown may be modified for illustrative purposes. Images may be out-of-date and not current. 10.14.19

# ONE LOGAN SQUARE





The information and images contained herein are from sources deemed reliable. However, Metro Commercial Real Estate, Inc. makes no representation whatsoever as to their accuracy or authenticity. Images shown may be modified for illustrative purposes. Images may be out-of-date and not current. 10.14.19

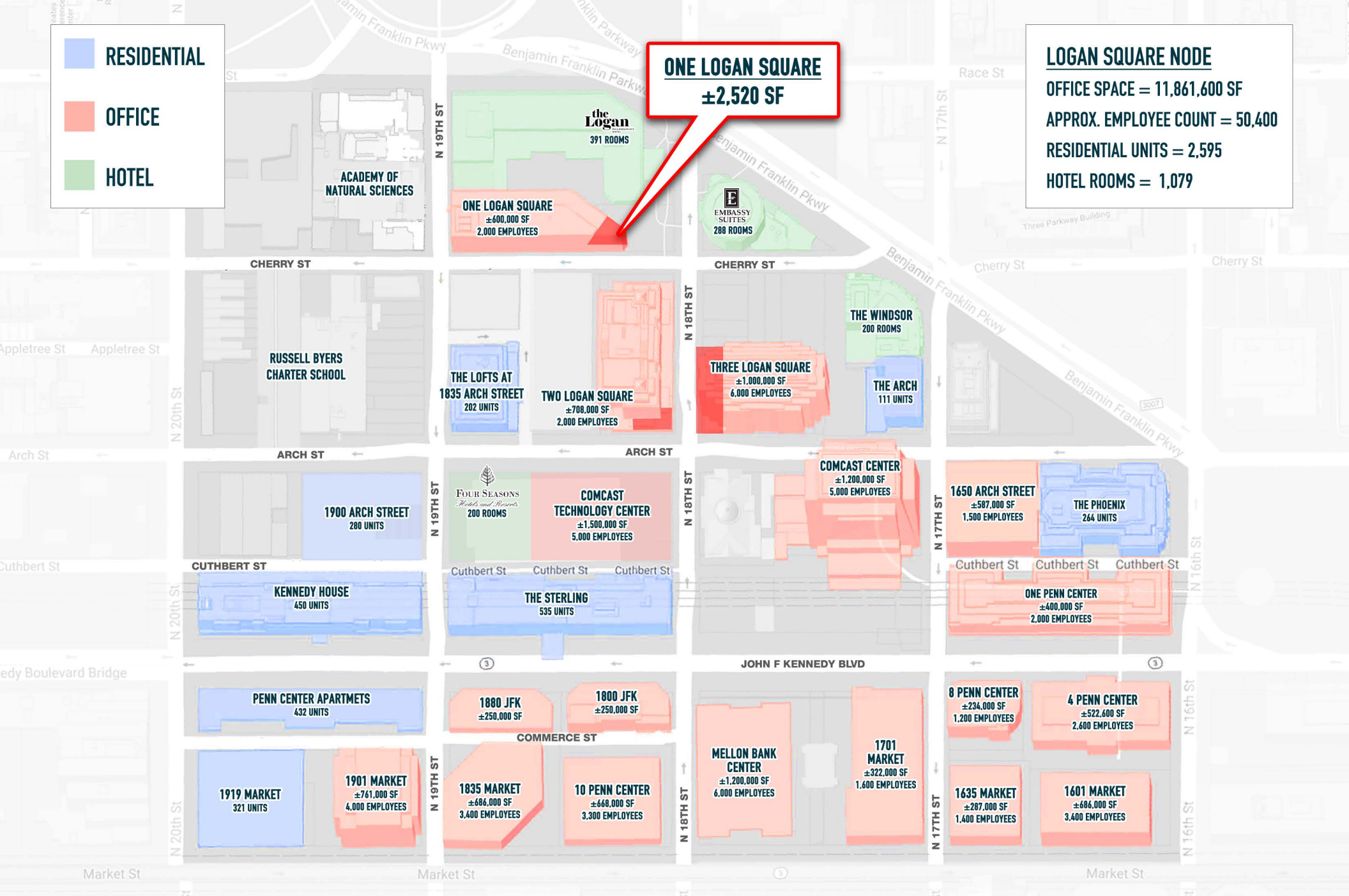
**ONE LOGAN SQUARE**



- RESIDENTIAL
- OFFICE
- HOTEL

**ONE LOGAN SQUARE**  
±2,520 SF

**LOGAN SQUARE NODE**  
 OFFICE SPACE = 11,861,600 SF  
 APPROX. EMPLOYEE COUNT = 50,400  
 RESIDENTIAL UNITS = 2,595  
 HOTEL ROOMS = 1,079



The information and images contained herein are from sources deemed reliable. However, Metro Commercial Real Estate, Inc. makes no representation whatsoever as to their accuracy or authenticity. Images shown may be modified for illustrative purposes. Images may be out-of-date and not current. 10.14.19

# ONE LOGAN SQUARE





**ONE  
LOGAN SQUARE  
±2,520 SF**

**COMCAST TECHNOLOGY CENTER**

- 1,121 FEET TALL
- 59-STORY TOWER
- APPROXIMATELY 1,517 MILLION RENTABLE SQUARE FEET, INCLUDING 1,285 MILLION RENTABLE SQUARE FEET OF OFFICE SPACE, 230,112 SQUARE FEET OF HOTEL SPACE AND 2,682 RENTABLE SQUARE FEET OF RETAIL SPACE

FOUR SEASONS  
*Hotels and Resorts*

The information and images contained herein are from sources deemed reliable. However, Metro Commercial Real Estate, Inc. makes no representation whatsoever as to their accuracy or authenticity. Images shown may be modified for illustrative purposes. Images may be out-of-date and not current. 10.14.19

# ONE LOGAN SQUARE

