

FOR SALE

133rd and Highway 65 NE, Ham Lake, MN 55304



PROPERTY FEATURES

- Land sale; approximately 1.60 useable acres
- Commercial District 1 zoning allows:
 - Retail uses
 - Restaurant
 - Office
 - Daycare
 - Church
- Approximately 340' frontage to Hwy 65
- Approximately 235' deep
- Well & Septic

LIST PRICE: \$390,000 Taxes: \$3,777.00 (2015)

For More Information Contact: MARTY FISHER
PREMIER COMMERCIAL PROPERTIES, LLC
6897 139th Lane NW Ramsey, MN 55303
763.862.2005

www.premiercommercialproperties.com



FOR SALE

133rd and Highway 65 NE, Ham Lake, MN 55304

Approximately 1.60 useable acres
Well & Septic



Existing drainage & utility easement

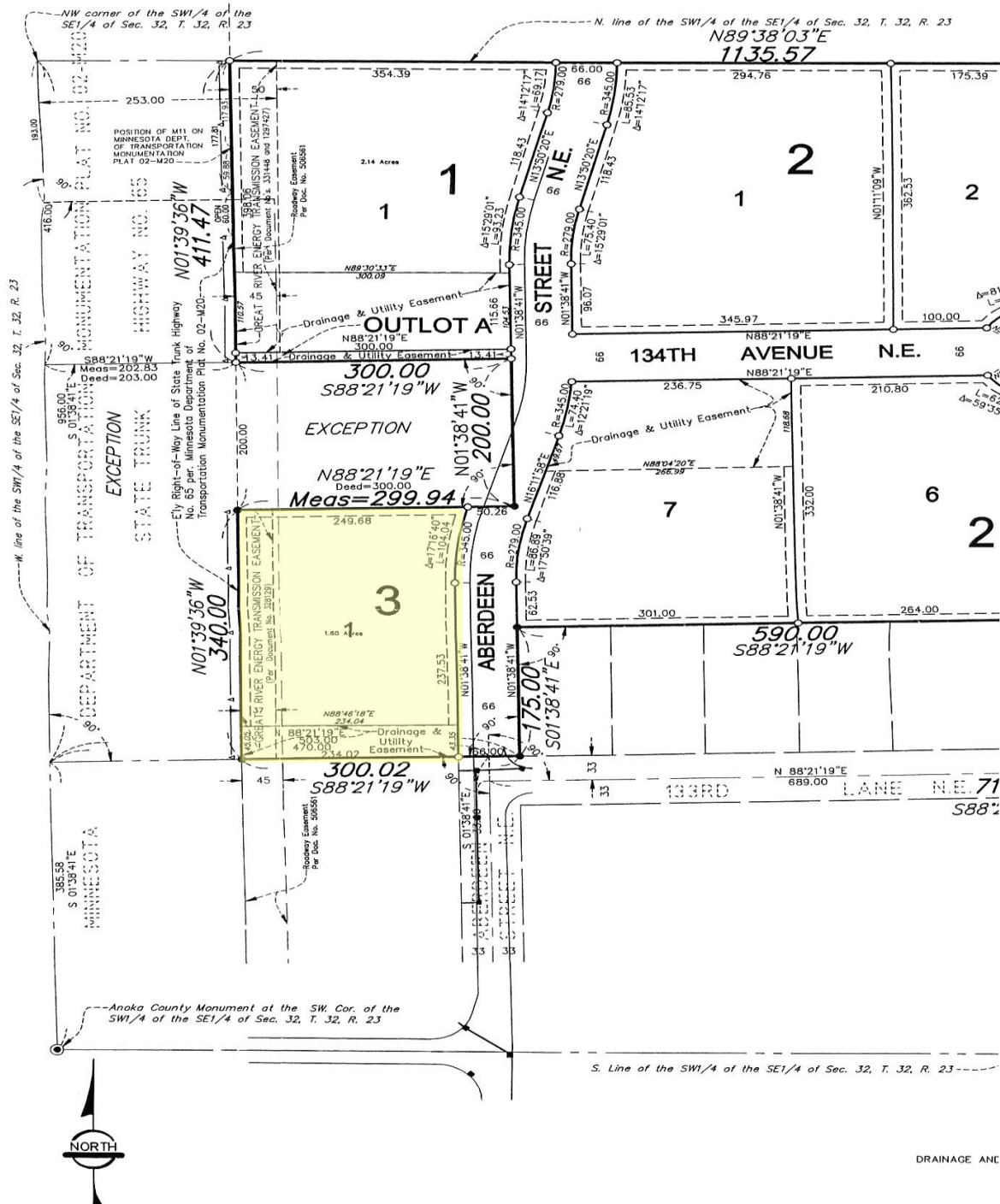
For More Information Contact: MARTY FISHER
PREMIER COMMERCIAL PROPERTIES, LLC
6897 139th Lane NW Ramsey, MN 55303
763.862.2005

www.premiercommercialproperties.com



FOR SALE

133rd and Highway 65 NE Ham Lake, MN 55304



For More Information Contact: MARTY FISHER
PREMIER COMMERCIAL PROPERTIES, LLC
6897 139th Lane NW Ramsey, MN 55303
763.862.2005

www.premiercommercialproperties.com



FOR SALE

133rd and Highway 65 NE, Ham Lake, MN 55304



For More Information Contact: MARTY FISHER
PREMIER COMMERCIAL PROPERTIES, LLC

6897 139th Lane NW Ramsey, MN 55303

763.862.2005

www.premiercommercialproperties.com



PREMIER
COMMERCIAL
PROPERTIES

FOR SALE

133rd and Highway 65 NE Ham Lake, MN 55304

Future
frontage
road
concept
to be
started
Fall 2015



For More Information Contact: MARTY FISHER
PREMIER COMMERCIAL PROPERTIES, LLC
6897 139th Lane NW Ramsey, MN 55303
763.862.2005

www.premiercommercialproperties.com

