

FOR LEASE

WWW.INSITEREALTY.COM

WORLD HOUSTON 16

16,200 SQUARE FEET



4140 WORLD HOUSTON PARKWAY
SUITE 130
HOUSTON, TEXAS

PROPERTY FEATURES

- 5,236 SF OF OFFICE
- 10,946 SF WAREHOUSE
- 3 DOCK-HIGH AND 1 RAMPED DOOR
- 24' CLEAR HEIGHT
- AMPLE PARKING
- DIRECT ACCESS TO BELTWAY 8 AND
CONVENIENT ACCESS TO HIGHWAY 59,
I-45, HARDY TOLL ROAD AND BUSH IAH



FOR MORE INFORMATION PLEASE CONTACT

LOGAN GREER • LGREER@INSITEREALTY.COM • 713.339.5363

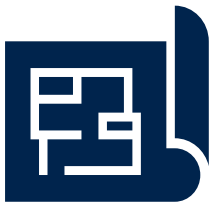
DAYNE WUNDERLICH • DWUNDERLICH@INSITEREALTY.COM • 713.339.5329

A PROJECT OF

EASTGROUP
PROPERTIES

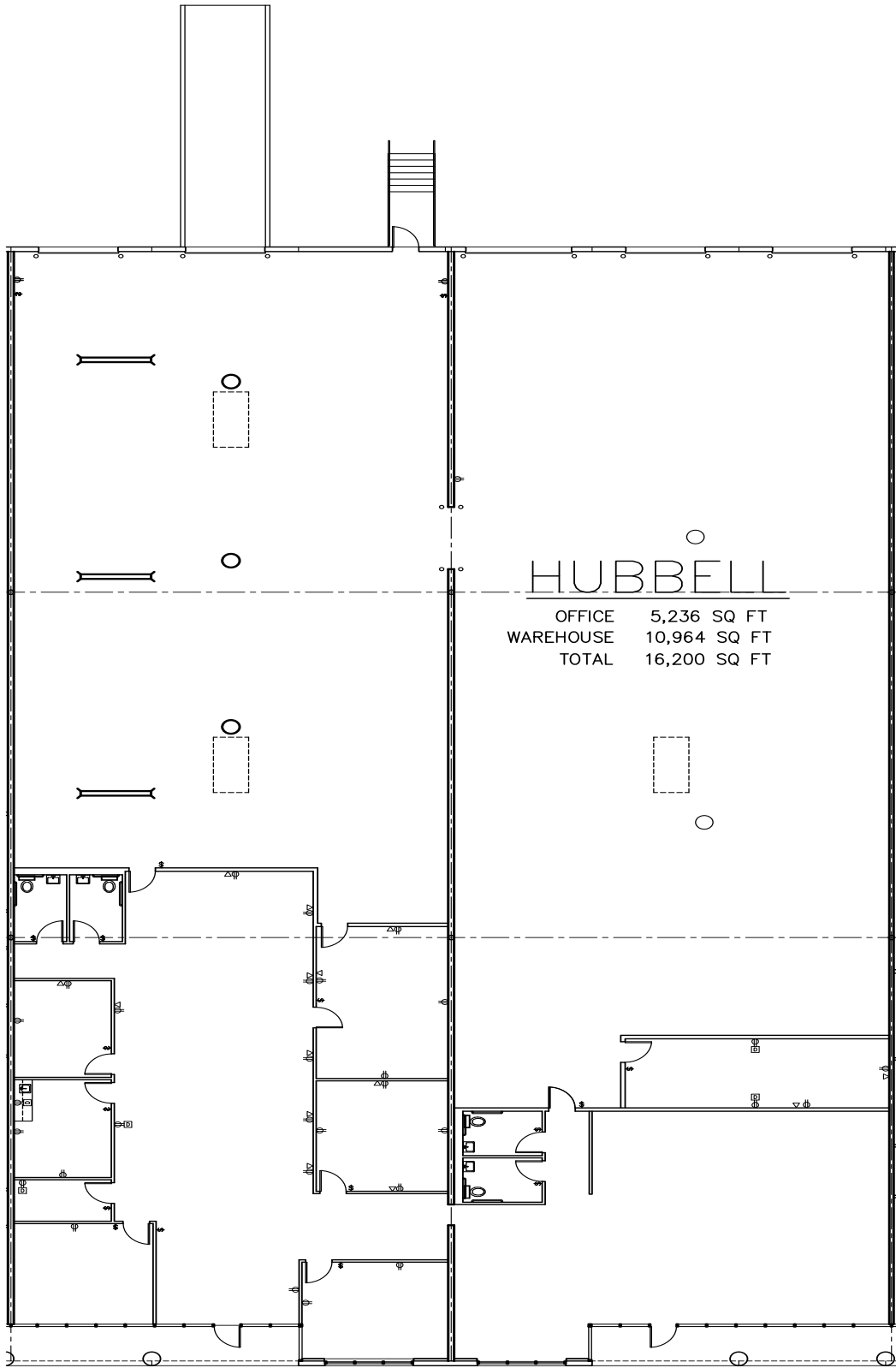


The information contained herein was obtained from sources believed reliable; however, InSite Realty Partners, L.P. makes no guarantees, warranties or representations as to the completeness or accuracy thereof. The presentation of this property is submitted subject to errors, omissions, change of price or conditions, prior sale or lease, or withdrawal without written notice.



WORLD HOUSTON 16

SITE PLAN & FLOOR PLAN



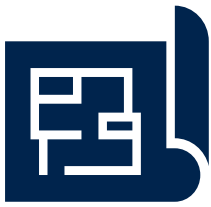
FOR MORE INFORMATION PLEASE CONTACT

LOGAN GREER • LGREER@INSITEREALTY.COM • 713.339.5363

DAYNE WUNDERLICH • DWUNDERLICH@INSITEREALTY.COM • 713.339.5329

A PROJECT OF

EASTGROUP
PROPERTIES



WORLD HOUSTON 16

AERIAL



- 2 MILES TO BUSH IAH
- IMMEDIATELY TO BELTWAY 8
- 0.5 MILES TO HWY 59
- 5 MILES TO HARDY TOLL ROAD
- 7 MILES TO I-45
- 14 MILES TO GRAND PKWY/99
- 14 MILES TO DOWNTOWN
- 19 MILES TO PORT OF HOUSTON
- 21 MILES TO GALLERIA/UPTOWN

FOR MORE INFORMATION PLEASE CONTACT

LOGAN GREER • LGREER@INSITEREALTY.COM • 713.339.5363

DAYNE WUNDERLICH • DWUNDERLICH@INSITEREALTY.COM • 713.339.5329



The information contained herein was obtained from sources believed reliable; however, InSite Realty Partners, L.P. makes no guarantees, warranties or representations as to the completeness or accuracy thereof. The presentation of this property is submitted subject to errors, omissions, change of price or conditions, prior sale or lease, or withdrawal without written notice.