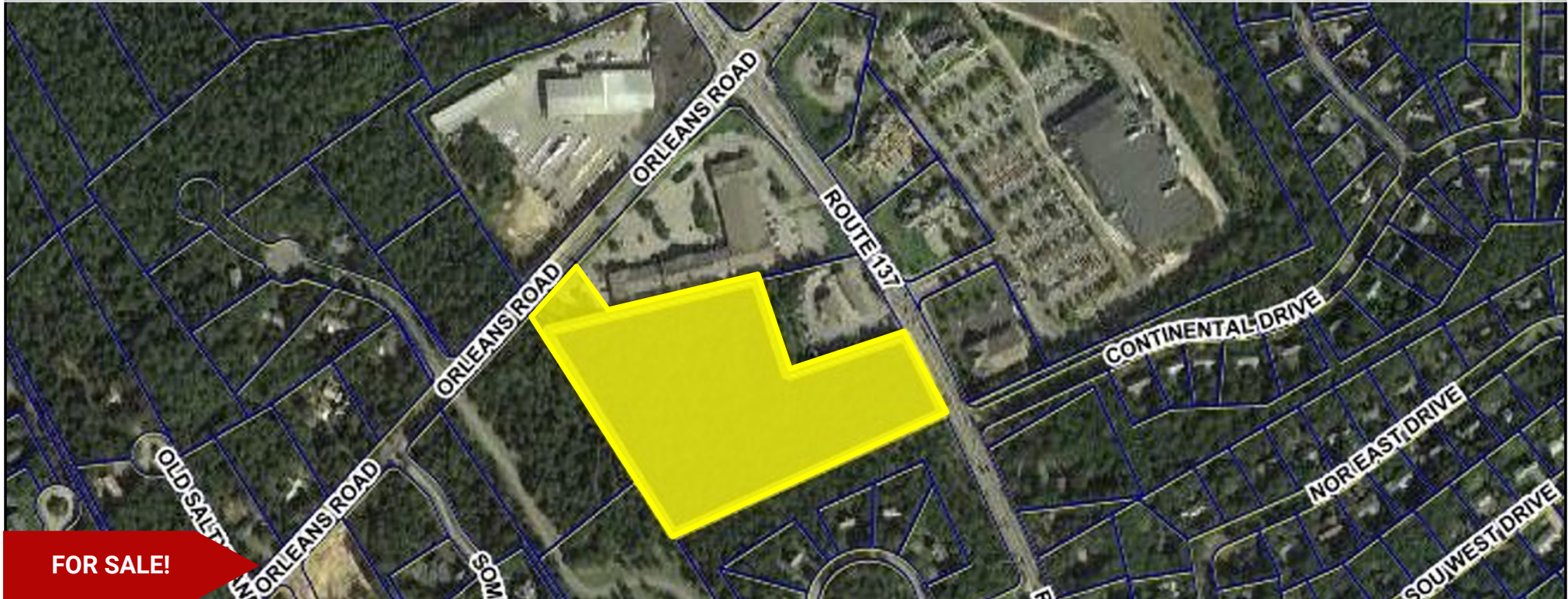


10.7+/- Acre Commercial Lot for Sale on Routes 137 & 39 in Harwich, Cape Cod



FOR SALE!

Contact **Brad Kuhrtz** at Commercial Realty Advisors at 508-862-9000 ext 118 and bkuhrtz@comrealty.net

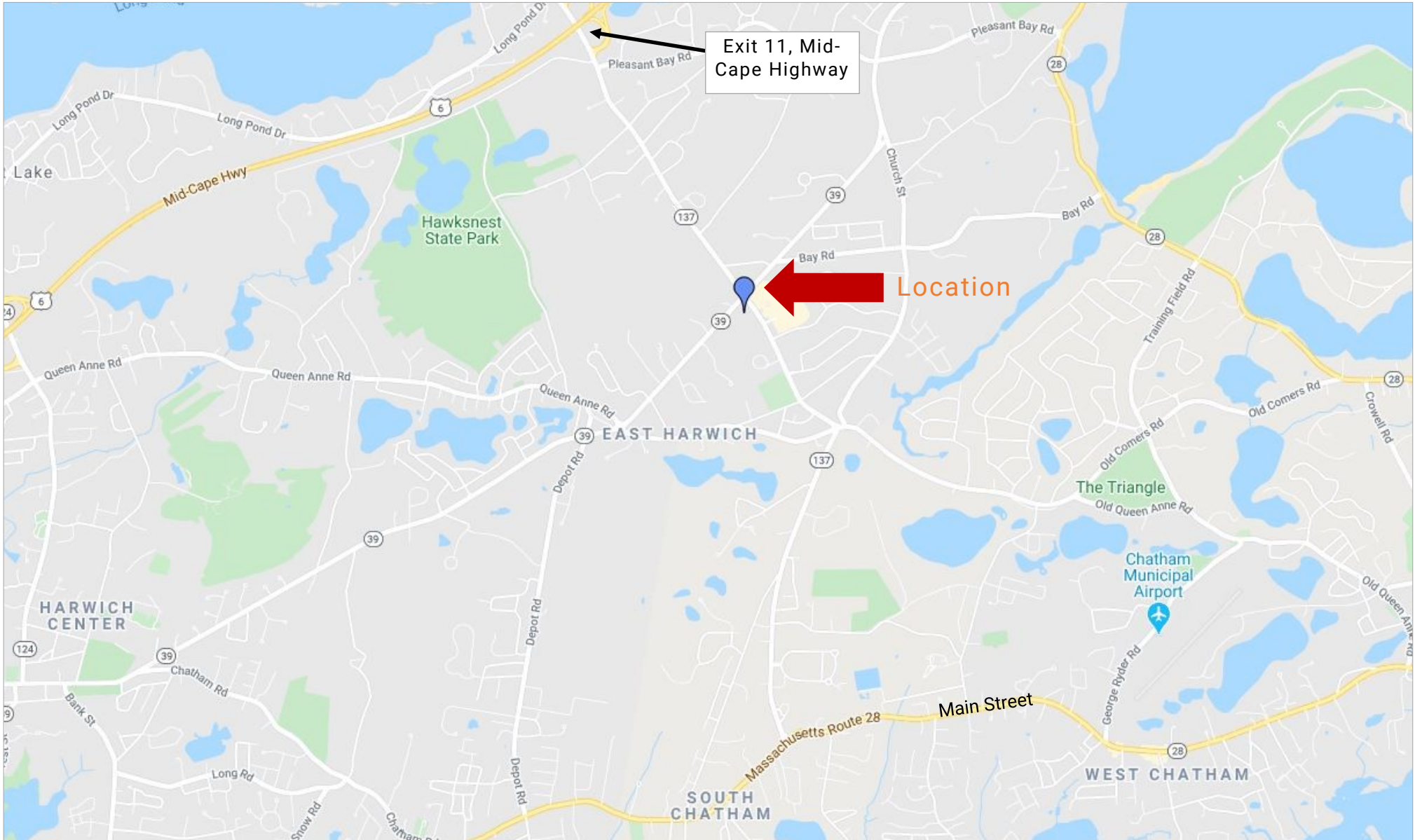
Property Summary:

- This property is 10.7+/- acres of commercial highway-2 zoned land in Harwich's business district
- There is frontage on both Route 137 and Route 39, two highly trafficked roadways
- The land is level and wooded & located minutes from Route 6, the Mid-Cape Highway
- Minimum lot size allowed is 50,000 Sq. Ft.

For Sale:
\$4,000,000

Commercial Lot on Routes 137 & 39, Harwich, MA 02645

Property Map



Commercial Lot on Routes 137 & 39, Harwich, MA 02645

Property Aerial View



Commercial Realty Advisors' Disclaimer

This information has been secured from sources we believe to be reliable, but we make no representation or warranties, expressed or implied, as to the accuracy of the information contained herein. Commercial Realty Advisors, Inc. and the agent presenting this opportunity represent the Seller / Lessor, and are neither architects, engineers, inspectors, accountants nor attorneys, and therefore all buyers / tenants must consult with their own architects, engineers, inspectors, accountants or attorneys as to financial, zoning, lot line, handicapped accessibility, flood plain, mechanical, structural, or environmental concerns. Buyer must verify all information and bears all the risk for inaccuracies. Referenced square footage and acreage and sketched outlines are approximate, and this information package is subject to change.

Commercial Lot on Routes 137 & 39, Harwich, MA 02645

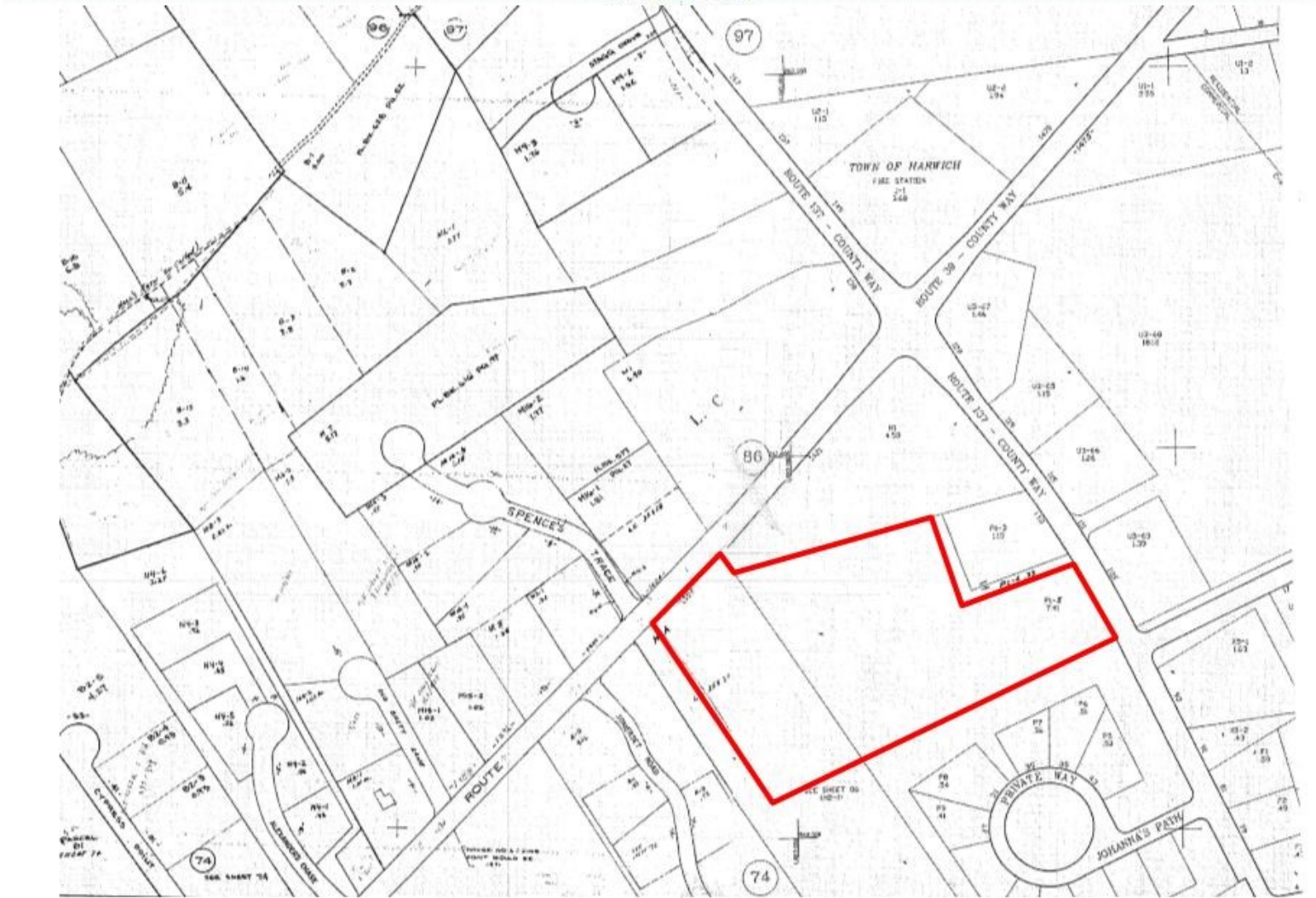
Property Summary:

This property is 10.7+/- acres of commercial highway-2 zoned land in the heart of Harwich's business district. There is frontage on both Route 137 and Route 39, two highly trafficked roadways. The land is level and wooded. Located minutes from Route 6, the Mid-Cape Highway. Minimum lot size allowed is 50,000 Sq. Ft.

Title: Barnstable Land Court: Certificate of Title No. 156575

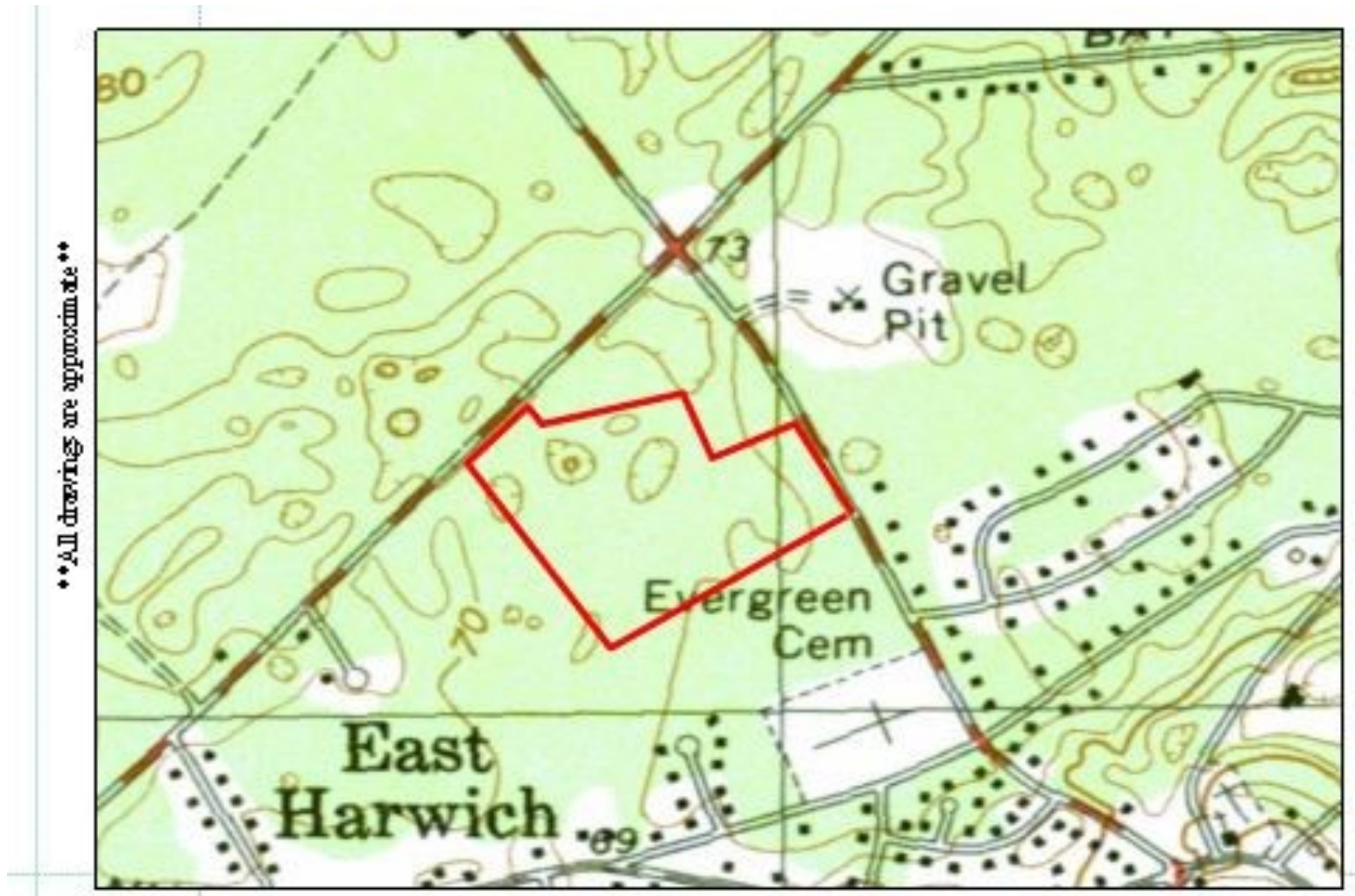
Zoning: The property is zoned Commercial Highway-2 by the Town of Harwich.

LAND PLAN



Commercial Lot on Routes 137 & 39, Harwich, MA 02645

Property Images: Land Location



Commercial Realty Advisors' Disclaimer

This information has been secured from sources we believe to be reliable, but we make no representation or warranties, expressed or implied, as to the accuracy of the information contained herein. Commercial Realty Advisors, Inc. and the agent presenting this opportunity represent the Seller / Lessor, and are neither architects, engineers, inspectors, accountants nor attorneys, and therefore all buyers / tenants must consult with their own architects, engineers, inspectors, accountants or attorneys as to financial, zoning, lot line, handicapped accessibility, flood plain, mechanical, structural, or environmental concerns. Buyer must verify all information and bears all the risk for inaccuracies. Referenced square footage and acreage and sketched outlines are approximate, and this information package is subject to change.