



# For Lease | $\pm$ 6,060 SF

15936 Bernardo Center Drive, San Diego, CA 92127



NEWMARK



# Rancho Pacifica Center ± 6,060 SF For Lease

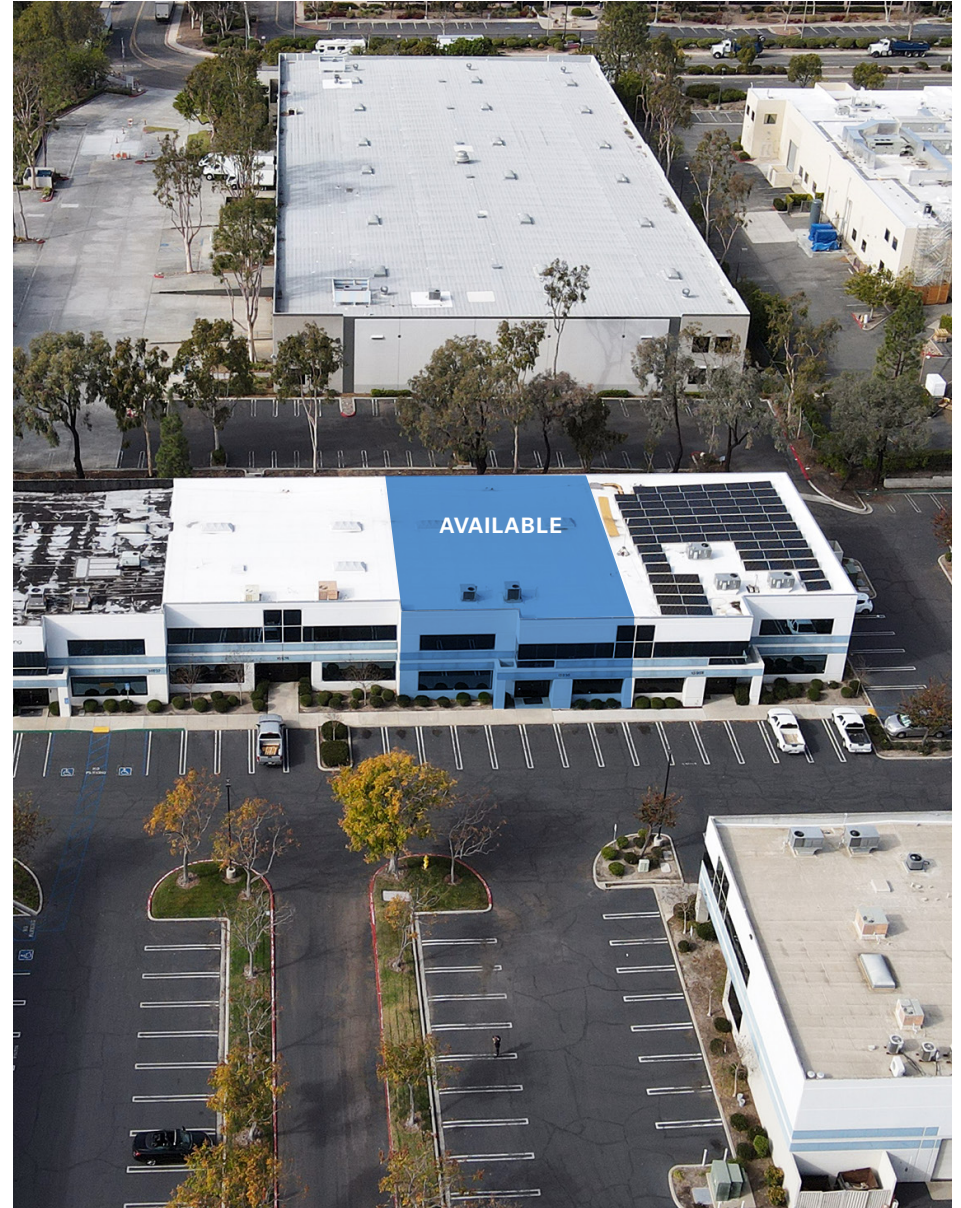
15936 BERNARDO CENTER DRIVE  
SAN DIEGO, CA 92127

## Property Details:

- 6,060 SF Class B Light Manufacturing Building
- 40% Office/60% Warehouse
- Functional improvements
- Two (2) Grade-Level Loading Doors
- 400 amp/277-480v/3phase
- Excellent natural light
- Excellent Freeway Access (I-15)
- Walking Distance to Amenities
- Zoning: IP-2-1

**Lease Rate: \$1.40/SF NNN**

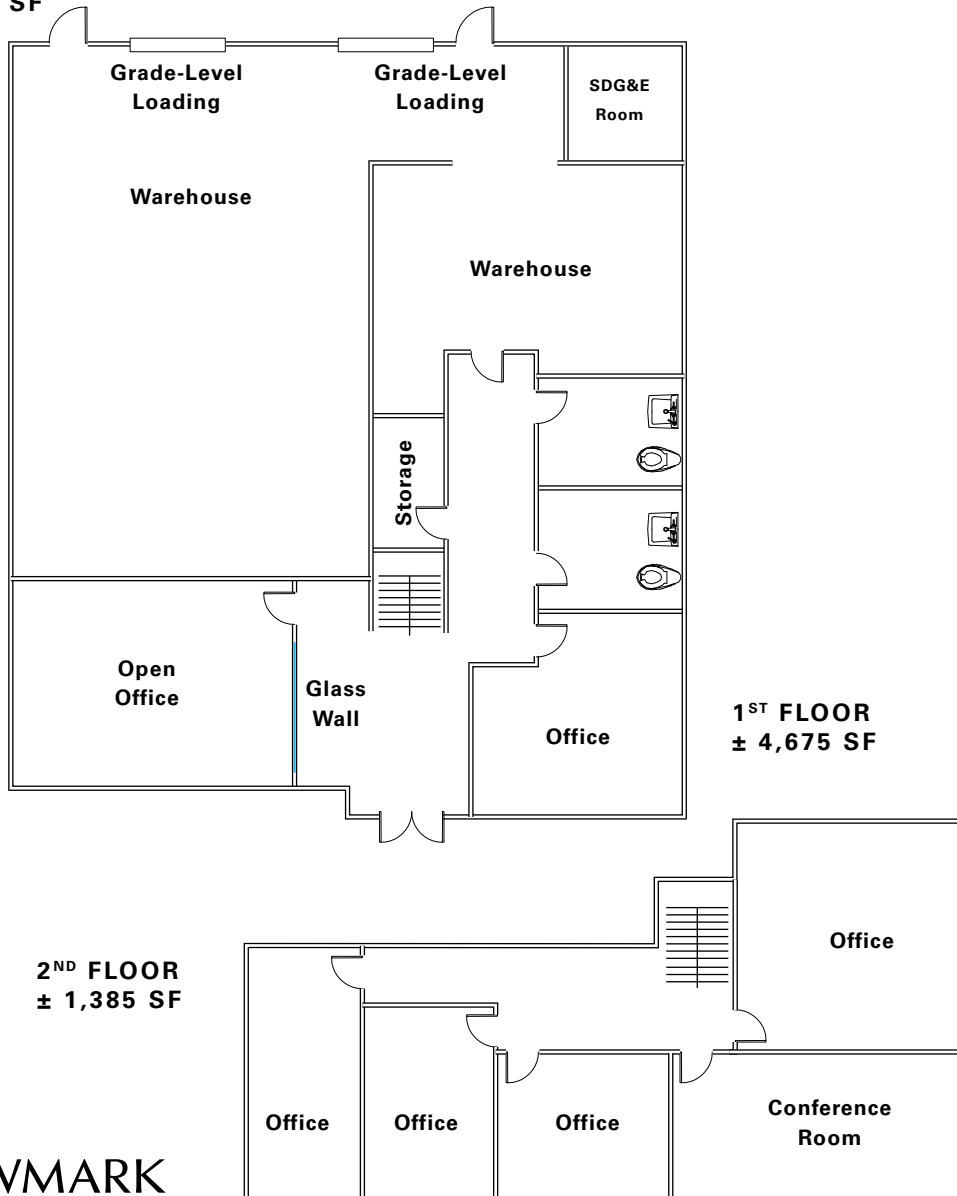
NEWMARK



# For Lease | ± 6,060 SF

15936 Bernardo Center Drive, San Diego, CA 92127

**FLOOR PLAN**  
± 6,060 SF



*For information, please contact:*

**Justin Maiolo**

Associate Director

t 858-875-3615

justin.maiolo@ngkf.com

CA RE Lic. #01910958

**Paul Britvar**

Director

t 858-875-3609

pbritvar@ngkf.com

CA RE Lic. #01946354

**Brent Bohlken**

Senior Managing Director

t 858-875-3616

bbohlken@ngkf.com

CA RE Lic. #01022607

**NEWMARK**

# For Lease | ± 6,060 SF

15936 Bernardo Center Drive, San Diego, CA 92127



*For information, please contact:*

**Justin Maiolo**

*Associate Director*

t 858-875-3615

[justin.maiolo@ngkf.com](mailto:justin.maiolo@ngkf.com)

CA RE Lic. #01910958

**Paul Britvar**

*Director*

t 858-875-3609

[pbritvar@ngkf.com](mailto:pbritvar@ngkf.com)

CA RE Lic. #01946354

**Brent Bohlken**

*Senior Managing Director*

t 858-875-3616

[bbohlken@ngkf.com](mailto:bbohlken@ngkf.com)

CA RE Lic. #01022607

**NEWMARK**

# For Lease | ± 6,060 SF

15936 Bernardo Center Drive, San Diego, CA 92127



*For information, please contact:*

**Justin Maiolo**  
*Associate Director*  
t 858-875-3615  
justin.maiolo@ngkf.com  
CA RE Lic. #01910958

**Paul Britvar**  
*Director*  
t 858-875-3609  
pbritvar@ngkf.com  
CA RE Lic. #01946354

**Brent Bohlken**  
*Senior Managing Director*  
t 858-875-3616  
bbohlken@ngkf.com  
CA RE Lic. #01022607

**San Diego Office**  
4655 Executive Dr., Suite 800  
San Diego, CA 92121  
t 858-875-3600  
Corporate License #01355491

**NEWMARK**

The broker for a purchaser of the property shall be entitled to receive a real estate commission only in the event that broker and the property's owner execute a written commission agreement containing the manner of calculation of that commission and all conditions to its payment, and the satisfaction of those conditions. Absent a written agreement to the contrary between that broker and Newmark that broker shall not look to Newmark for payment of such a commission or any other compensation. Although all information furnished regarding property for sale, lease, or financing has been obtained from sources deemed to be reliable, that information has not been verified by Newmark and no express representation is made nor is any to be implied as to the accuracy thereof. That information is subject to errors, omissions, change of price, rental or other conditions, prior sale, lease or financing, or withdrawal without notice and to any special conditions imposed by Newmark's client.