



**HISTORIC MAIN STREET OFFICE SPACE AVAILABLE**

**“RARE” Park City Main Street retail property available for lease.**

### Property Highlights

- 1300 SF
- Reception, conference room, work areas for 6-10 people
- Server area, printer room
- Excellent east view windows
- Quiet office
- Private
- 3-5 yr lease
- TI's negotiable

#### Steven Hooker

Director | Office/Investment/Retail/Land  
+1 435) 575-5607  
steve.hooker@cushwake.com

1794 Olympic Parkway, Suite 130  
Park City, Utah 84098  
Main +1 435 575 5600  
Fax +1 435 575 5640  
**cushmanwakefield.com**

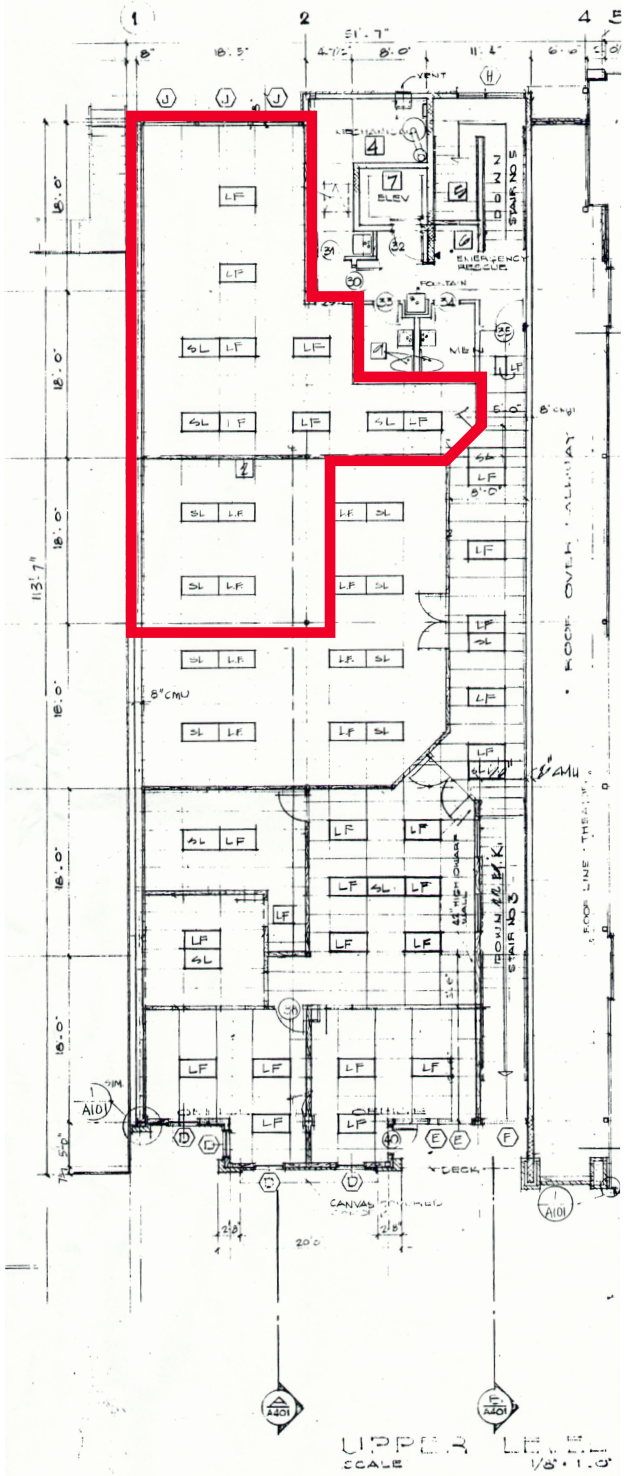


**CUSHMAN & WAKEFIELD**

FOR LEASE

# Thomas Anthony Gallery Building

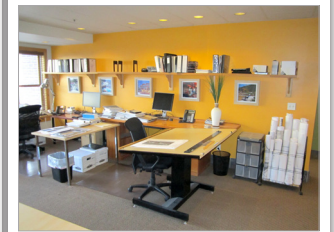
340 Main, Suite 203 / Park City, Utah 84060



← **A-203 Floor Plan**

**Interior Photos** →

**Exterior Photos** ↓



**Steven Hooker**  
 Director | Office/Investment/Retail/Land  
 +1 435) 575-5607  
 steve.hooker@cushwake.com

1794 Olympic Parkway, Suite 130  
 Park City, Utah 84098  
 Main +1 435 575 5600  
 Fax +1 435 575 5640  
**cushmanwakefield.com**



FOR LEASE

# Thomas Anthony Gallery Building

340 Main, Suite 203 / Park City, Utah 84060



**Steven Hooker**  
 Director | Office/Investment/Retail/Land  
 +1 435) 575-5607  
 steve.hooker@cushwake.com

1794 Olympic Parkway, Suite 130  
 Park City, Utah 84098  
 Main +1 435 575 5600  
 Fax +1 435 575 5640  
[cushmanwakefield.com](http://cushmanwakefield.com)