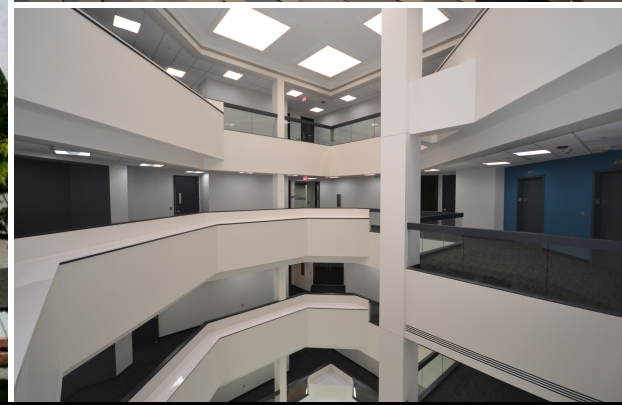


FOR LEASE

NORTH TROY CORPORATE PARK
5505 CORPORATE DRIVE
TROY, MI 48098



UP TO ±57,000 SF AVAILABLE

PROPERTY FEATURES:

- Complete renovation completed in 2018
- 5 story, ±141,000 SF building on 14.2 acres
- New fitness facility with yoga and locker rooms
- New conference facilities and training rooms
- New full service cafeteria
- Dramatic full-height atrium with beautiful glass elevators
- Ideal location for non-profit and government agency
- Parking ratio of 5.37/1,000
- Close proximity to area amenities: hotels, restaurants and shopping centers
- Zoned R-C, research center, for maximum flexibility



FOR MORE INFORMATION PLEASE CONTACT:

ROBERT GAGNIUK
robert.gagniuk@freg.com

248.324.2000

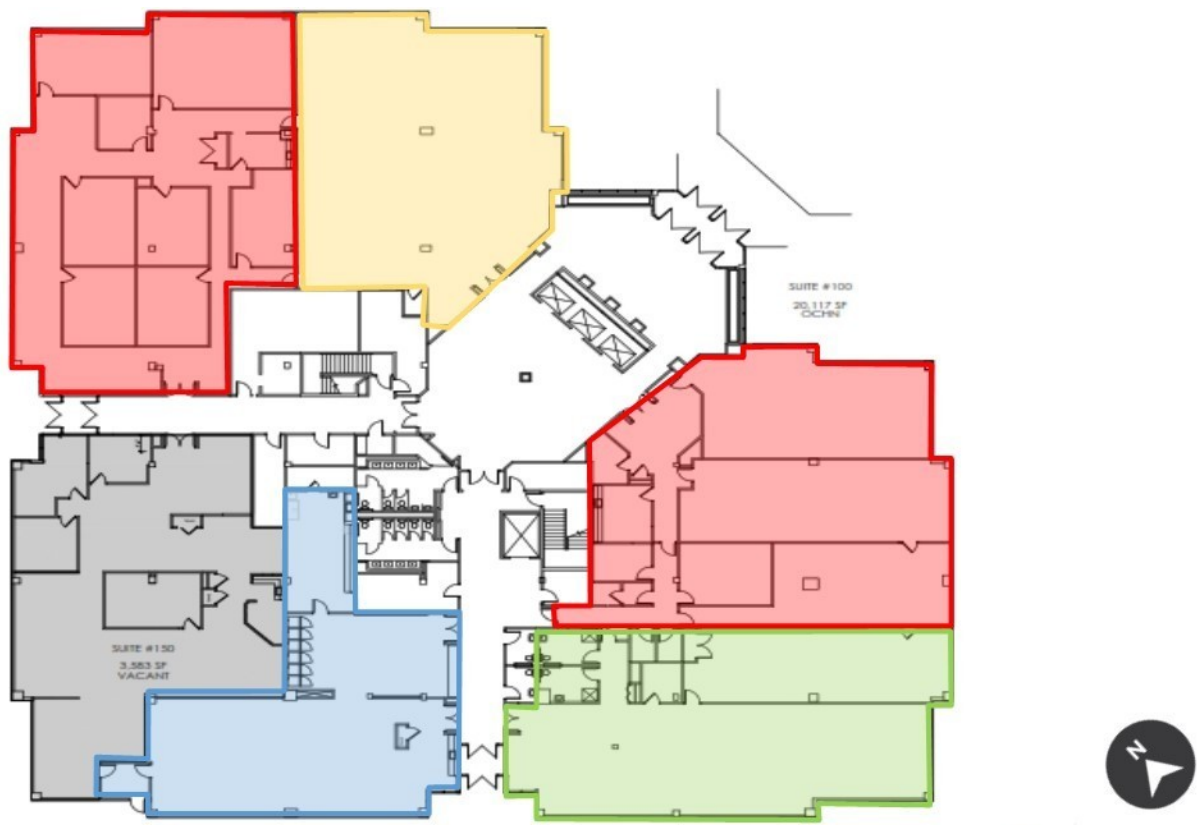
eCODE 737

FOR LEASE

NORTH TROY CORPORATE PARK
5505 CORPORATE DRIVE
TROY, MI 48098



5505 CORPORATE DRIVE
1ST FLOOR



5505 CORPORATE DRIVE, SOUTHFIELD MI 48098

- TOWN HALL
- TRAINING CENTER/
CONFERENCE ROOM
- LUNCH AREA/
CAFE
- GYM/ YOGA
STUDIO

FOR MORE INFORMATION PLEASE CONTACT:

ROBERT GAGNIUK robert.gagniuk@freg.com

248.324.2000
eCODE 737