

# Retail/Office For Lease



704-706 & 726 Newmark Mall  
Montebello, CA

## PROPERTY FEATURES

- Multi-Tenant Retail/Office Building
- City-Owned Parking Lot
- Spaces Available:
  - 704-706: 600 SF (Currently setup as a Hair Salon)
  - 726: 690 SF



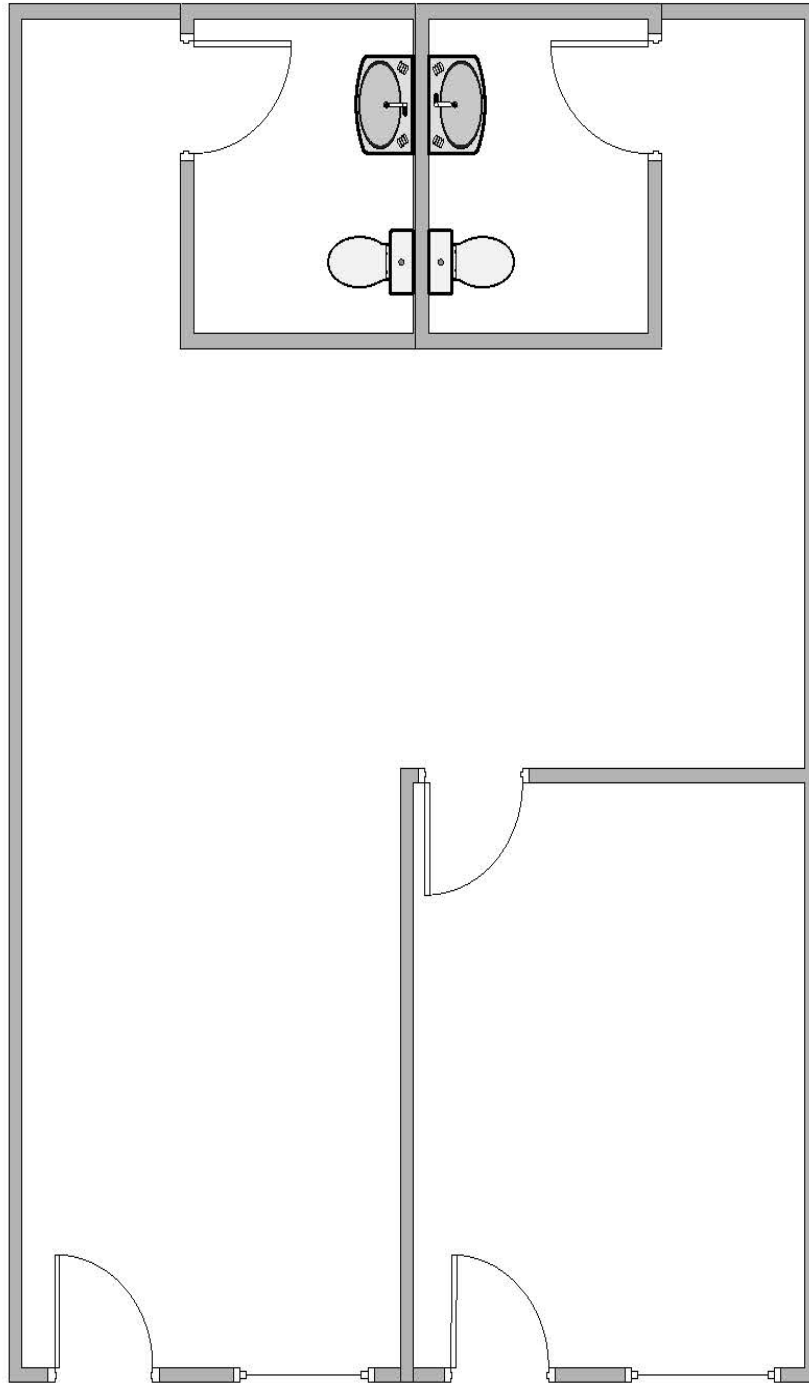
**GM Properties, Inc.**  
13305 Penn St., Suite 200  
Whittier, CA 90602

**Liam Hayes**  
562-762-3114  
liam@gmpropertiesinc.com  
Cal BRE#02004346

**Brent Haskell**  
562-762-3112  
brent@gmpropertiesinc.com  
Cal BRE#01221956

# Suite 704-706

# 600 Sq. Ft.



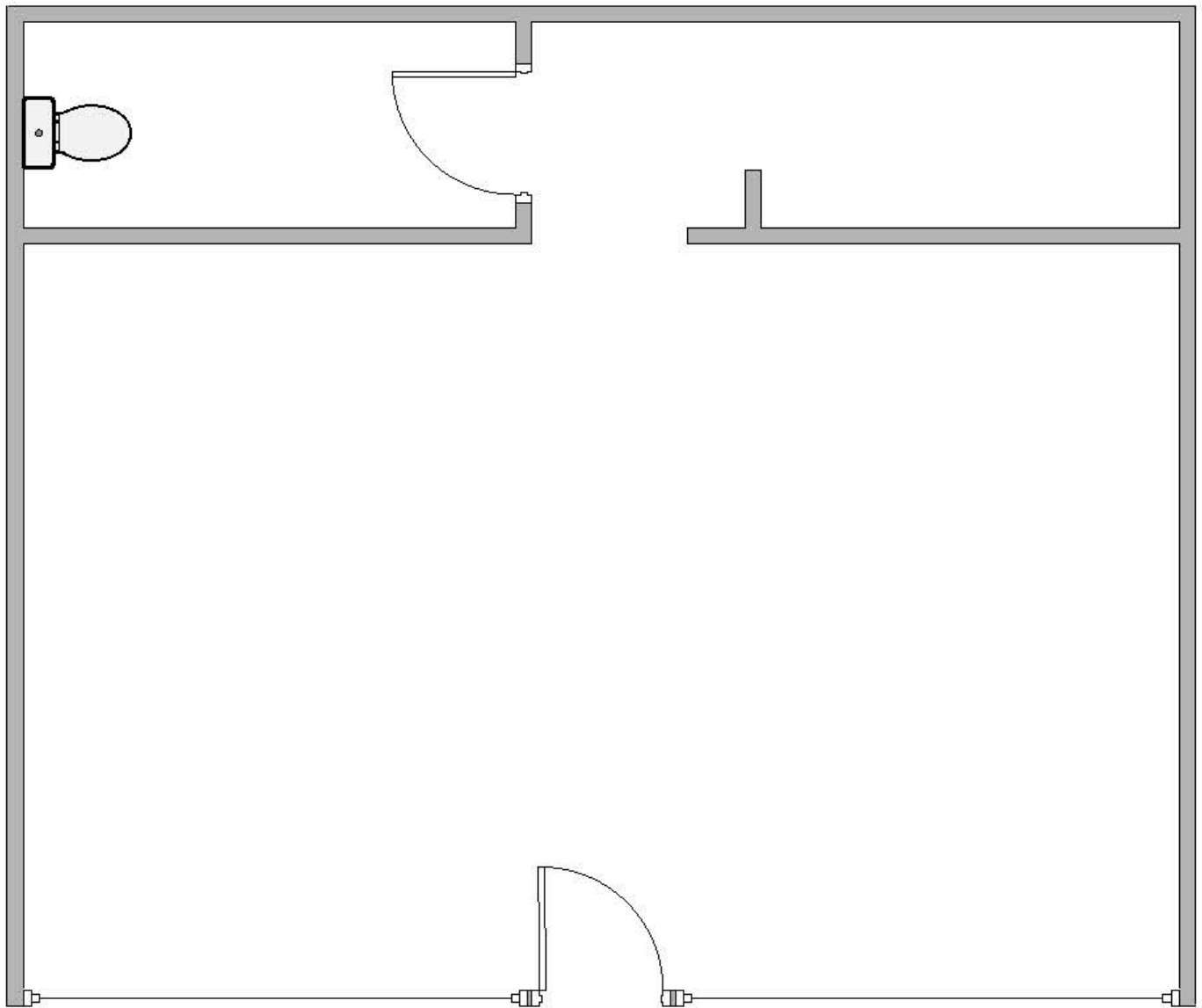
**GM Properties, Inc.**  
13305 Penn St., Suite 200  
Whittier, CA 90602

**Liam Hayes**  
562-762-3114  
liam@gmpropertiesinc.com  
Cal BRE#02004346

**Brent Haskell**  
562-762-3112  
brent@gmpropertiesinc.com  
Cal BRE#01221956

# Suite 726

# 690 Sq. Ft.



**GM Properties, Inc.**  
13305 Penn St., Suite 200  
Whittier, CA 90602

**Liam Hayes**  
562-762-3114  
liam@gmpropertiesinc.com  
Cal BRE#02004346

**Brent Haskell**  
562-762-3112  
brent@gmpropertiesinc.com  
Cal BRE#01221956