

FOR LEASE

15775 W SCHAEFER COURT NEW BERLIN WI 53151

FOUNDERS | **3**
REAL ESTATE SERVICES

Property Highlights

- Available immediately
- Great location with easy access to I-43
- High clear height
- Divisible space
- Fully air-conditioned
- Class A

Specifications

AVAILABLE SPACE	50,549 SF
Gross Building Area	50,549 SF
Parcel Size	6.45 acres
Parking	93 surface spaces
Lease Rate	\$6.50/SF NNN

Contact

Bob Flood
414.249.2300
bflood@founders3.com

Paul McBride
414.249.2305
pmcbride@founders3.com



414.271.1111 | www.founders3.com

Information shown herein was provided by Seller/Lessor and/or third parties and has not been verified by the broker unless otherwise indicated.

FOR LEASE

15775 W SCHAEFER COURT
NEW BERLIN WI 53151

FOUNDERS | **3**
REAL ESTATE SERVICES

PROPERTY SUMMARY



Building Specifications

Size	50,549 SF
Built	2001
General Use	Class B Flex
Construction	Masonry Block
Zoning	M-1
Utilities	Municipal Water and Sewer
Sprinkler	Wet

Warehouse Specifications

Size	30,133 SF (expandable-to-suit)
Ceiling Height	24'
Dock Doors	One (1) with Leveler
Drive-ins	One (1); 10' - 16'
Heat	Gas Hung Units
HVAC	Fully Air Conditioned
Lighting	High Efficiency
Power	3-phase, 480 Volt, 1,200 Amps (TBV by Tenant)

Office Specifications

Size	20,759 SF (flexible-size , finished-to-suit)
Finishes	Private Offices, Open Space, Training Rooms and Conference Room
HVAC	Gas Forced Air



414.271.1111 | wwwFOUNDERS3.com

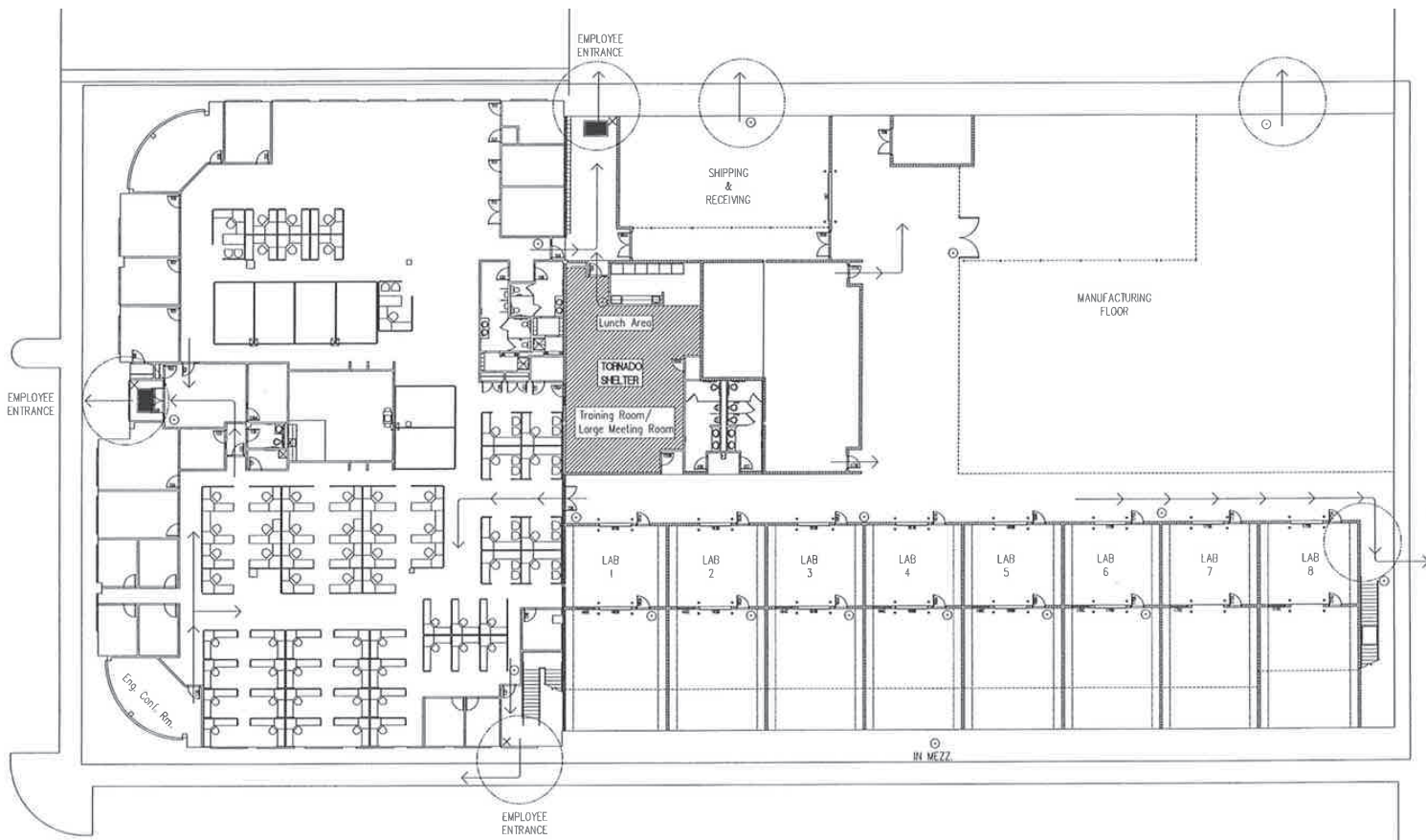
Information shown herein was provided by Seller/Lessor and/or third parties and has not been verified by the broker unless otherwise indicated.

FOR LEASE

15775 W SCHAEFER COURT
NEW BERLIN WI 53151

FOUNDERS | **3**
REAL ESTATE SERVICES

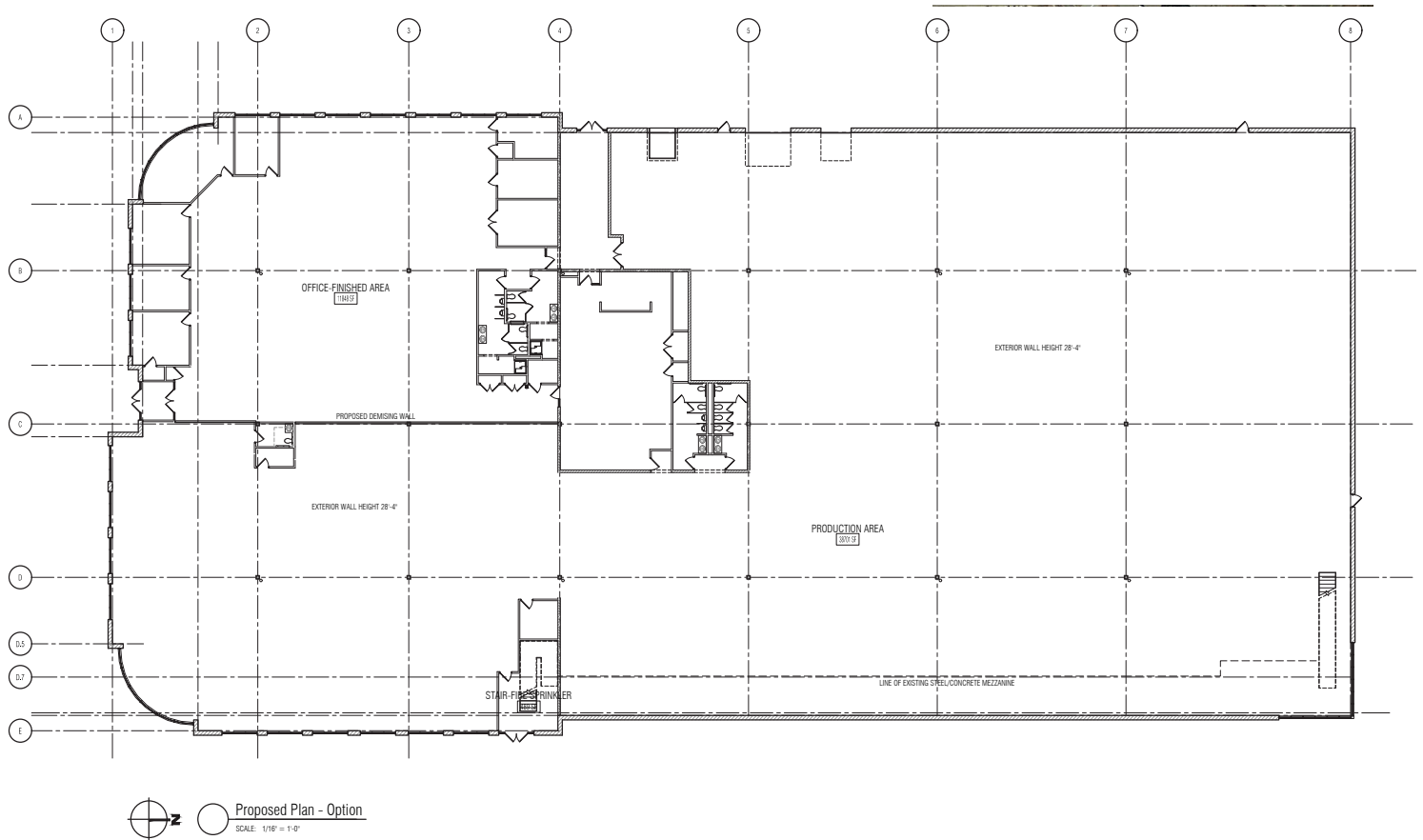
EXISTING FLOOR PLAN



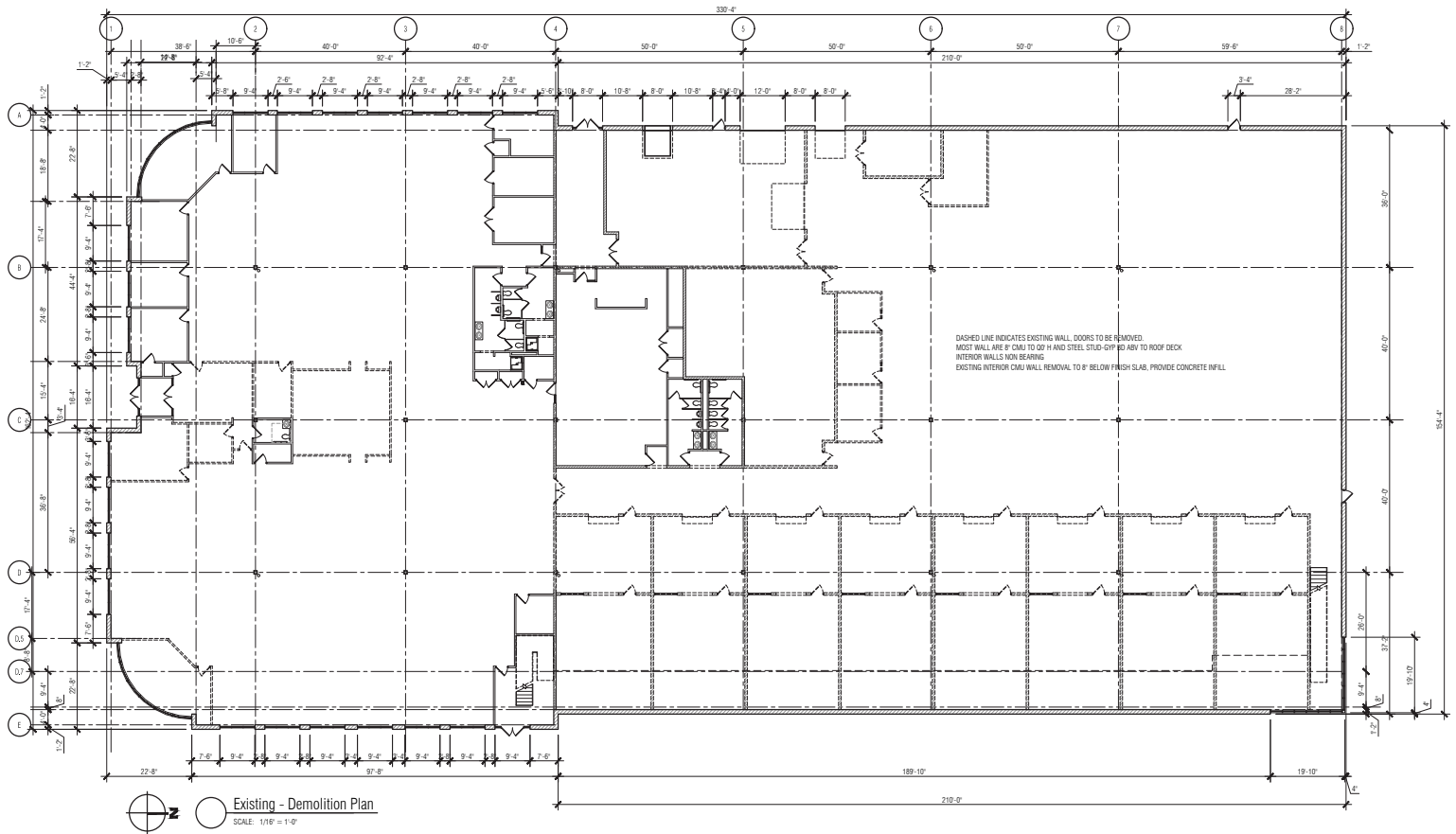
414.271.1111 | wwwFOUNDERS3.com

Information shown herein was provided by Seller/Lessor and/or third parties and has not been verified by the broker unless otherwise indicated.

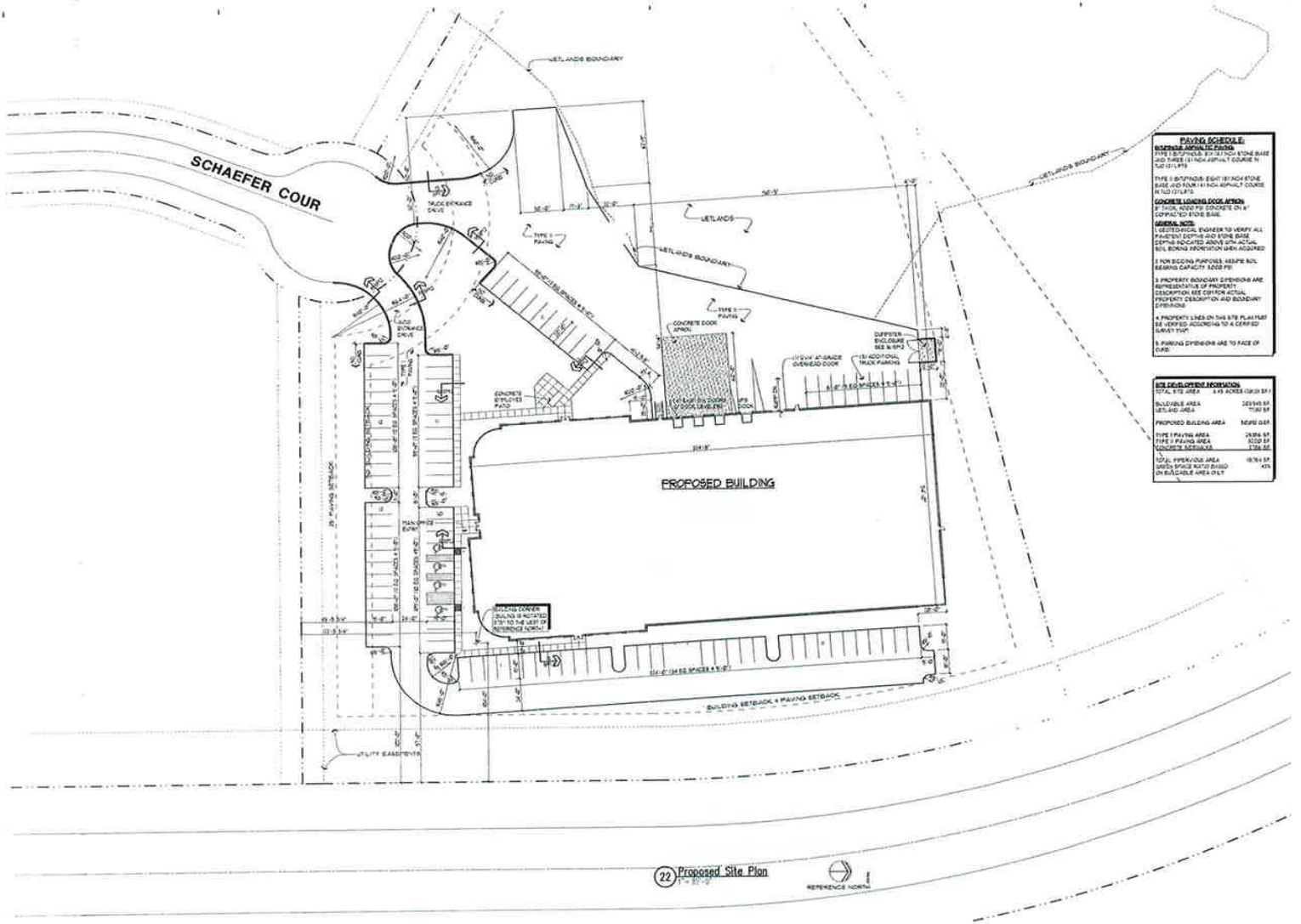
PROPOSED PLAN OPTION



DEMOLITION PLAN



SITE PLAN

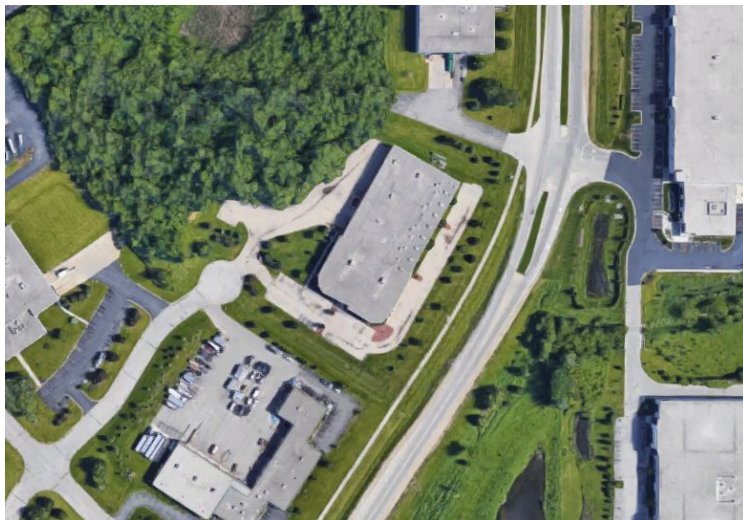
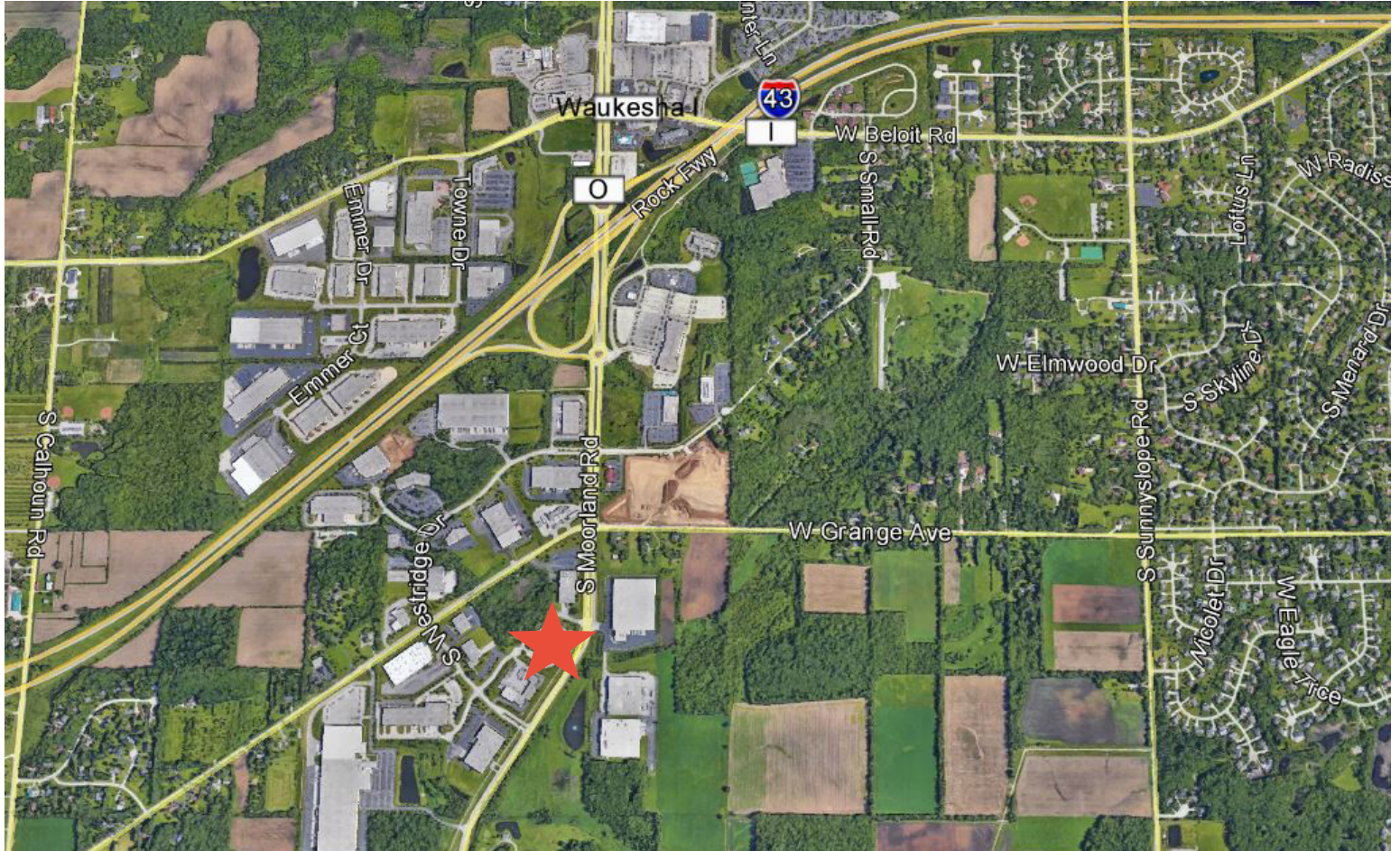


FOR LEASE

15775 W SCHAEFER COURT
NEW BERLIN WI 53151

FOUNDERS 3
REAL ESTATE SERVICES

AERIAL & LOCATION



Demographics

	1 MILE	3 MILE	5 MILE
Population	401	39,316	99,415
AVG HH Income	\$76,667	\$91,042	\$78,160



414.271.1111 | wwwFOUNDERS3.com

Information shown herein was provided by Seller/Lessor and/or third parties and has not been verified by the broker unless otherwise indicated.

STATE OF WISCONSIN BROKER DISCLOSURE



Wisconsin law requires all real estate licensees to give the following information about brokerage services to prospective customers.

Prior to negotiating on your behalf the Brokerage firm, or an agent associated with the firm, must provide you the following disclosure statement.

Disclosure to Customers

You are a customer of the brokerage firm (hereinafter Firm). The Firm is either an agent of another party in the transaction or a subagent of another firm that is the agent of another party in the transaction. A broker or a salesperson acting on behalf of the Firm may provide brokerage services to you. Whenever the Firm is providing brokerage services to you, the Firm and its brokers and salespersons (hereinafter Agents) owe you, the customer, the following duties:

- The duty to provide brokerage services to you fairly and honestly.
- The duty to exercise reasonable skill and care in providing brokerage services to you.
- The duty to provide you with accurate information about market conditions within a reasonable time if you request it, unless disclosure of the information is prohibited by law.
- The duty to disclose to you in writing certain Material Adverse Facts about a property, unless disclosure of the information is prohibited by law.
- The duty to protect your confidentiality. Unless the law requires it, the Firm and its Agents will not disclose your confidential information or the confidential information of other parties.
- The duty to safeguard trust funds and other property held by the Firm or its Agents.
- The duty, when negotiating, to present contract proposals in an objective and unbiased manner and disclose the advantages and disadvantages of the proposals.

Please review this information carefully. An Agent of the Firm can answer your questions about brokerage services, but if you need legal advice, tax advice, or a professional home inspection, contact an attorney, tax advisor, or home inspector. This disclosure is required by section 452.135 of the Wisconsin statutes and is for information only. It is a plain-language summary of the duties owed to a customer under section 452.133(1) of the Wisconsin statutes.

Confidentiality Notice to Customers

The Firm and its Agents will keep confidential any information given to the Firm or its Agents in confidence, or any information obtained by the Firm and its Agents that a reasonable person would want to be kept confidential, unless the information must be disclosed by law or you authorize the Firm to disclose particular information. The Firm and its Agents shall continue to keep the information confidential after the Firm is no longer providing brokerage services to you.

No representation is made as to the legal validity of any provision or the adequacy of any provision in any specific transaction.

The following information is required to be disclosed by law:

1. Material Adverse Facts, as defined in section 452.01(5g) of the Wisconsin Statutes (see "Definition of Adverse Facts" below).
2. Any facts known by the Firm or its Agents that contradict any information included in a written inspection report on the property or real estate is the subject of the transaction.

To ensure that the Firm and its Agents are aware of what specific information you consider confidential, you may list that information below or provide that information to the Firm or its Agents by other means. At a later time, you may also provide the Firm or its Agents with other information you consider to be confidential.

CONFIDENTIAL INFORMATION

NON-CONFIDENTIAL INFORMATION

(the following information may be disclosed to the Firm and its Agents)

(Insert information you authorize to be disclosed, such as financial qualification information.)

Definition of Material Adverse Facts

A "Material Adverse Fact" is defined in Wis. Stat. 452.01(5g) as an Adverse Fact that a party indicates is of such significance, or that is generally recognized by a competent licensee as being of such significance to a reasonable party, that it affects or would affect the party's decision to enter into a contract or agreement concerning a transaction or affects or would affect the party's decision about the terms of such a contract or agreement.

An "Adverse Fact" is defined in Wis. Stat. 452.01(1e) as a condition or occurrence that a competent licensee generally recognizes will significantly and adversely affect the value of the property, significantly reduce the structural integrity of improvements to real estate, or present a significant health risk to occupants of the property; or information that indicates that a party to a transaction is not able to or does not intend to meet his or her obligations under a contract or agreement made concerning the transaction.

Notice About Sex Offender Registry

You may obtain information about the sex offender registry and persons registered with the registry by contacting the Wisconsin Department of Corrections on the Internet at <http://www.doc.wi.gov> or by telephone at 608-240-5830.

