

1219 11th Ave SE

Olympia, WA



FOR SALE

Brand-New Directly Across From St. Mike's

Evan Parker
360.705.0174
eparker@kiddermathews.com

Amy Evans
360.705.1337
aevans@kiddermathews.com

kiddermathews.com

km Kidder
Mathews

1219 11th Ave SE

Olympia, WA

Features

LAYOUT	Customize the layout!
LOCATION	Near I-5 and capitol
SUITES	Could be demised to two suites
AMENITIES	Finishing carpet tiles, ceiling grid, lighting, HVAC and plumbing
PRICE	\$675,000



Evan Parker
360.705.0174
eparker@kiddermathews.com

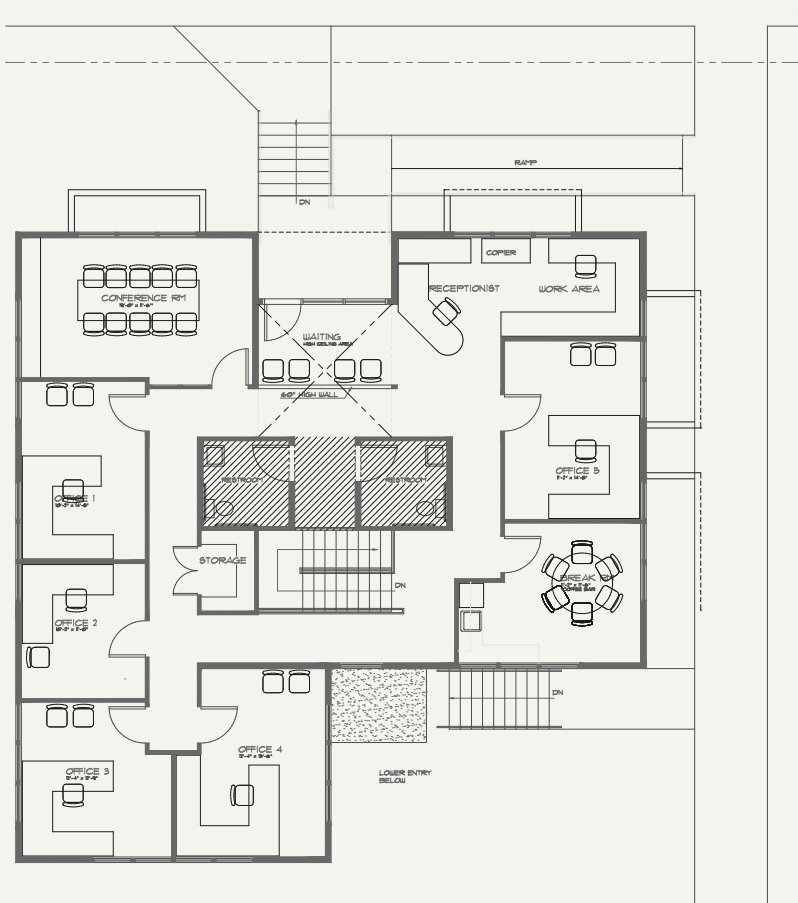
Amy Evans
360.705.1337
aevans@kiddermathews.com

kiddermathews.com

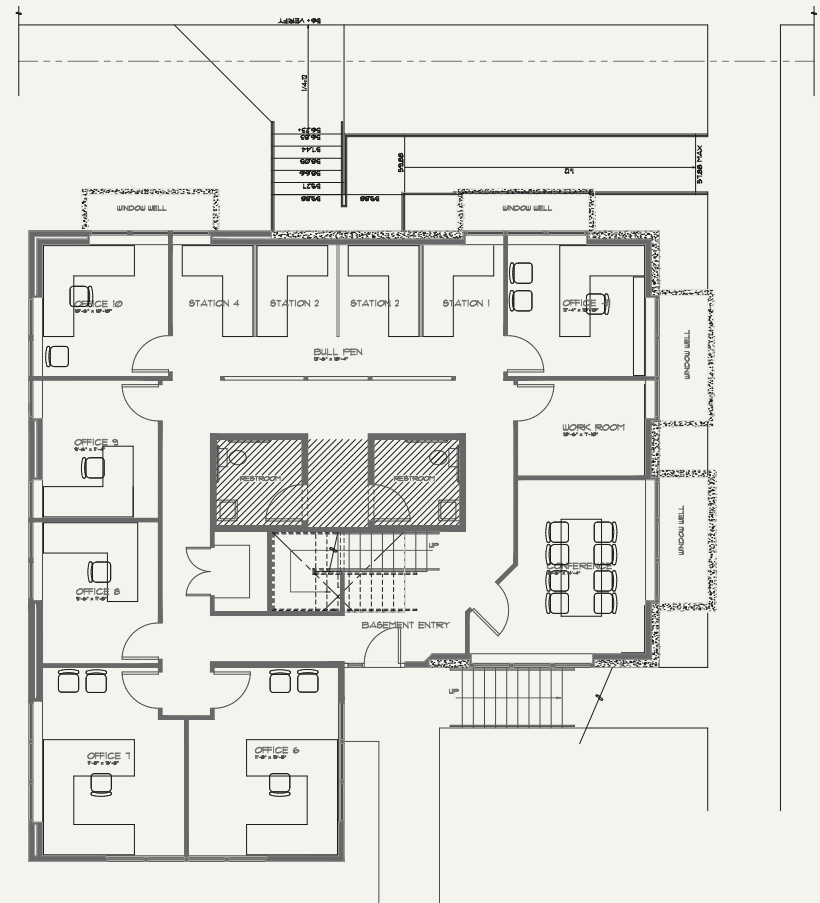
km Kidder
Mathews

This information supplied herein is from sources we deem reliable. It is provided without any representation, warranty or guarantee, expressed or implied as to its accuracy. Prospective Buyer or Tenant should conduct an independent investigation and verification of all matters deemed to be material, including, but not limited to, statements of income and expenses. Consult your attorney, accountant, or other professional advisor.

Proposed Floor Plans



FIRST LEVEL



BASEMENT LEVEL

Evan Parker
360.705.0174
eparker@kiddermathews.com

Amy Evans
360.705.1337
aevans@kiddermathews.com

kiddermathews.com

