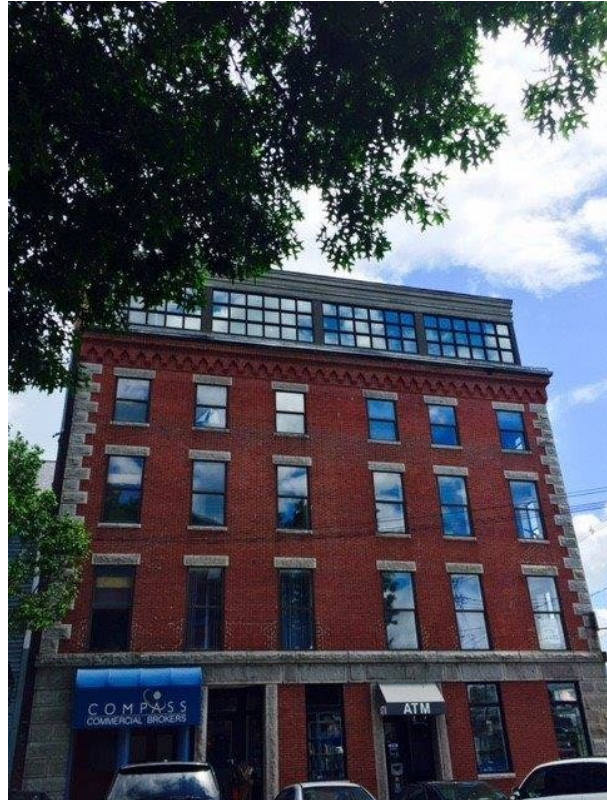


# Join Compass Commercial Brokers

## 1 Dana St, Portland, ME 04101

Listing ID:	30518448
Status:	Active
Property Type:	Office For Lease
Office Type:	Executive Suites, Office Building
Contiguous Space:	200 - 2,400 SF
Total Available:	4,388 SF
Lease Rate:	\$20 - 25 PSF (Annual)
Base Monthly Rent:	\$4,000 - 4,141
Lease Type:	Modified Gross
Nearest MSA:	Portland-South Portland
County:	Cumberland
Tax ID/APN:	032 U004
Zoning:	B3
Class of Space:	Class A



### Overview/Comments

Join Compass Commercial at 1 Dana Street.



### Property Contacts



#### Steve M Baumann

Compass Commercial Brokers, LLC  
207-831-4063 [M]  
207-253-1781 [O]  
sbaumann@compass-cb.com