

149,156 SF

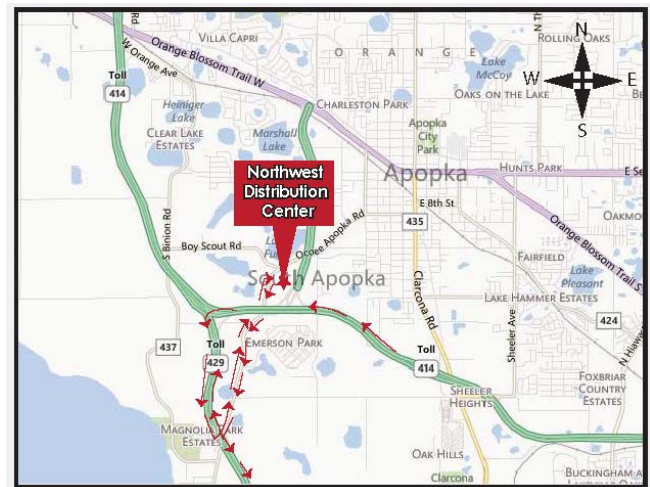
NORTHWEST DISTRIBUTION CENTER

1349 Ocoee Apopka Road at SR 429 | Apopka, FL



STATE OF THE ART FEATURES

- Total Building Size: 149,156 SF
- Front Load Designed Building
- Office: Build-to-Suit
- Clear Height: 32'
- Dock High Doors: 40
- Grade Level Doors: (2) 12' W x 16' H
- Column Spacing: 50' x 46'-8" Typical
50' x 60' Loading Bays
- Truck Court: 187'
- Sprinkler System: ESFR
- Building Dimensions: 746' W x 200' D
- Total Personnel Parking: 151
- Overflow Trailer Parking: 39
- Construction: Tilt Wall Construction
- Power: 277/480 volt, 3 phase, 4 wire 2,000 amp
- **SUBSTANTIAL COMPLETION FEBRUARY 2017**



FOR MORE INFORMATION, CONTACT:

Bo Bradford, CCIM, SIOR
Co-President/Principal
321.281.8502
bbradford@lee-associates.com

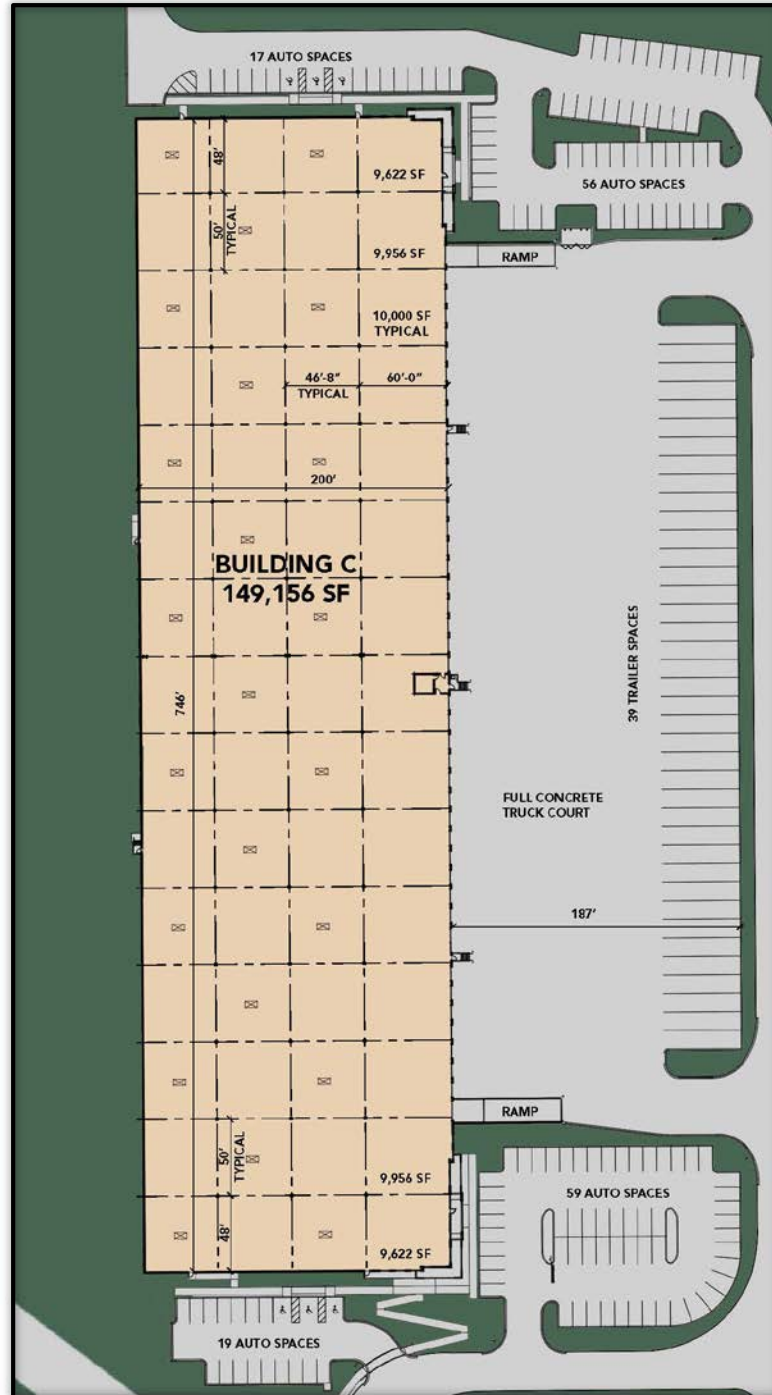
Tom McFadden, SIOR
Co-President/Principal
321.281.8501
tmcfadden@lee-associates.com

OAKMONT
INDUSTRIAL GROUP

LEE & ASSOCIATES[®]
COMMERCIAL REAL ESTATE SERVICES

NORTHWEST DISTRIBUTION CENTER

1349 Ocoee Apopka Road at SR 429 | Apopka, FL



FOR MORE INFORMATION, CONTACT:

Bo Bradford, CCIM, SIOR
Co-President/Principal
321.281.8502
bbradford@lee-associates.com

Tom McFadden, SIOR
Co-President/Principal
321.281.8501
tmcfadden@lee-associates.com

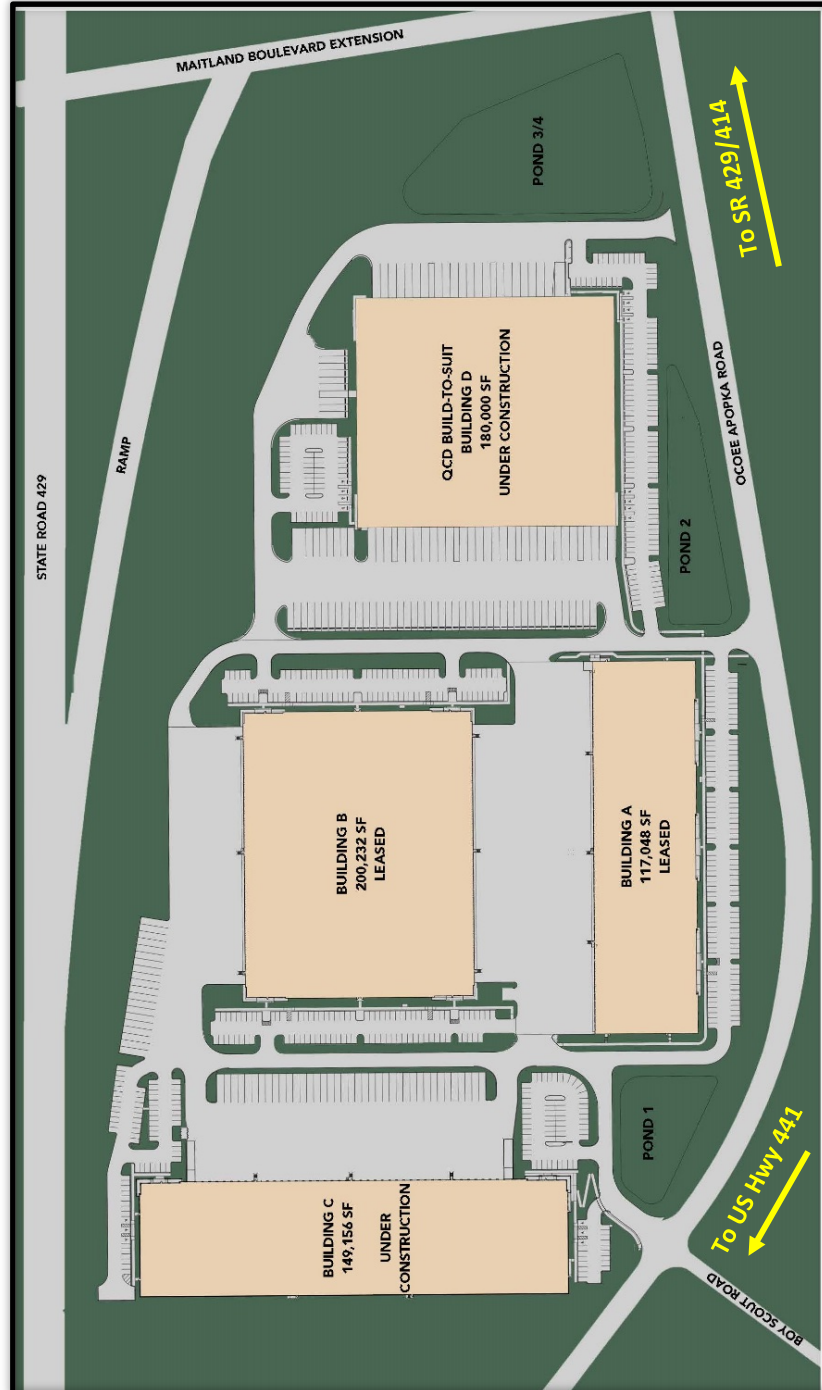
OAKMONT
INDUSTRIAL GROUP

LEE & ASSOCIATES
COMMERCIAL REAL ESTATE SERVICES

NORTHWEST DISTRIBUTION CENTER

1349 Ocoee Apopka Road at SR 429 | Apopka, FL

MASTER SITE PLAN



FOR MORE INFORMATION, CONTACT:

Bo Bradford, CCIM, SIOR
Co-President/Principal
321.281.8502
bbradford@lee-associates.com

Tom McFadden, SIOR
Co-President/Principal
321.281.8501
tmcfadden@lee-associates.com

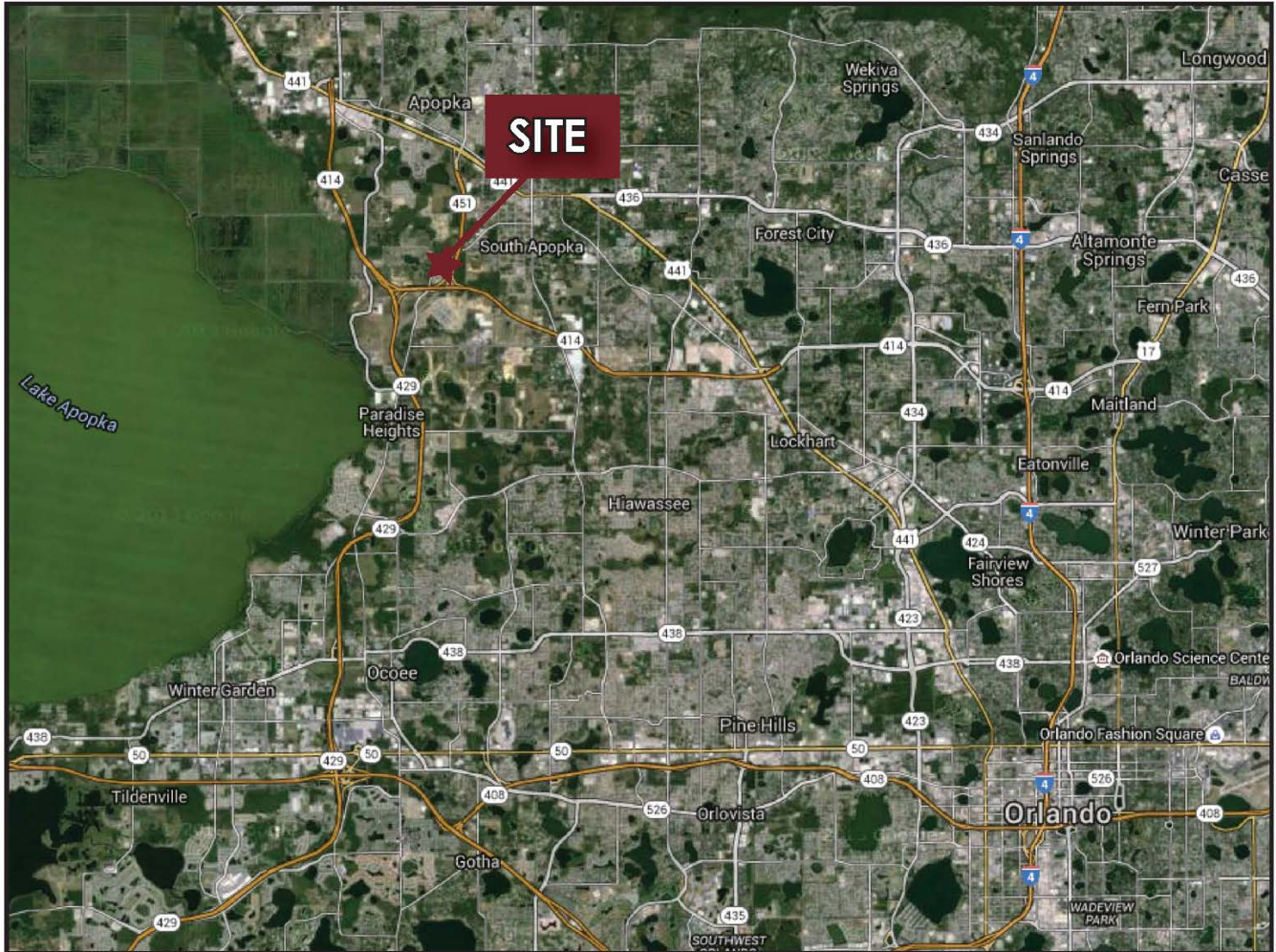
OAKMONT
INDUSTRIAL GROUP

LEE & ASSOCIATES®
COMMERCIAL REAL ESTATE SERVICES

NORTHWEST DISTRIBUTION CENTER

1349 Ocoee Apopka Road at SR 429 | Apopka, FL

MAP



Distances:

- SR 414: 3.27 Miles
- SR 429: 1.70 Miles
- FL Turnpike: 8.51 Miles
- I-4: 20.04 Miles

FOR MORE INFORMATION, CONTACT:

Bo Bradford, CCIM, SIOR
Co-President/Principal
321.281.8502
bbradford@lee-associates.com

Tom McFadden, SIOR
Co-President/Principal
321.281.8501
tmcfadden@lee-associates.com

OAKMONT
INDUSTRIAL GROUP

LEE & ASSOCIATES®
COMMERCIAL REAL ESTATE SERVICES