



PROPERTY INFORMATION

Reduced!

- For Lease: ~~\$3,000~~ NNN
\$1,500
- For Sale: \$425,000
- 11 Truck Cross Dock
- Easy Interstate access
- Located off Garrett Way Truck Route
- 8 OHD 10x10 Cross Dock
- 3 OHD 10x14 providing interior loading and unloading



www.cbcadvisors.com

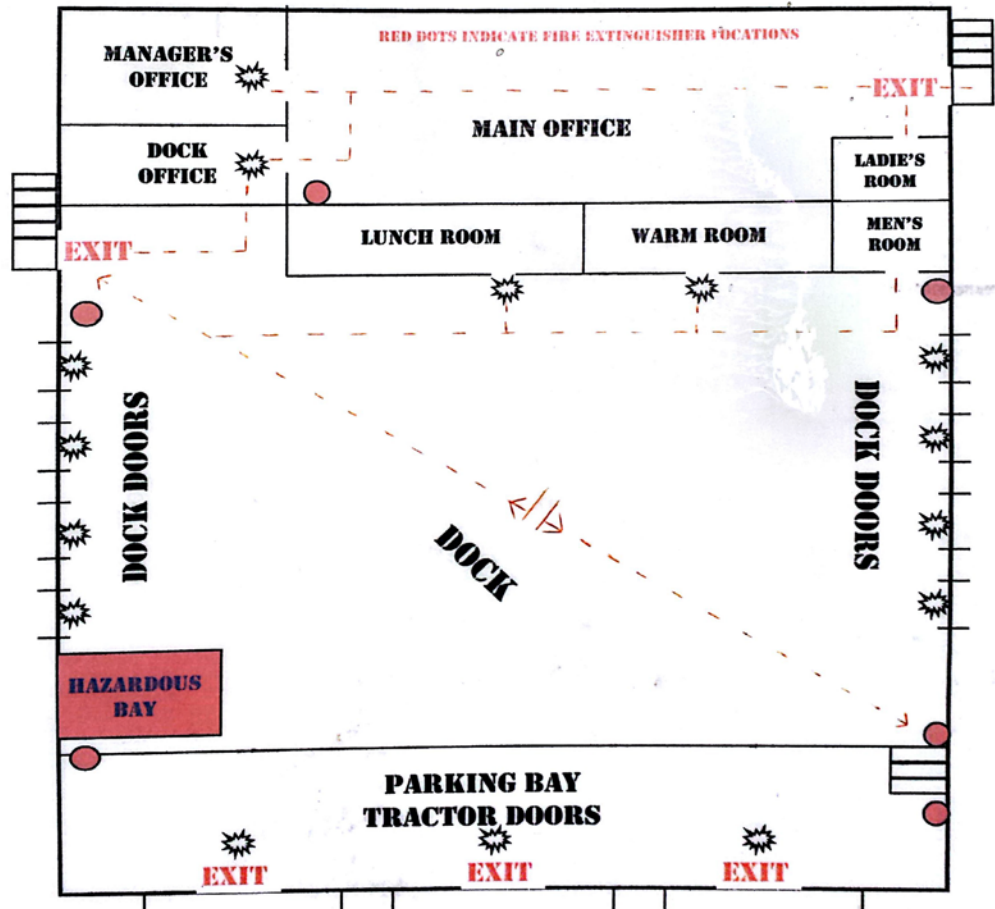


DON ZEBE
P 208.403.1973
don.zebe@cbcadvisors.com

SPENCER WARD
P 208.241.5710
spencer.ward@cbcadvisors.com

CBC ADVISORS | 2043 E CENTER ST | POCATELLO, ID | (P) 208.403.1973 | (F) 801.947.8301

This statement with the information it contains is given with the understanding that all negotiations relating to the purchase, renting, or leasing of the property described above shall be conducted through this office. The information while not guaranteed has been secured from sources we believe to be reliable. Each office is independently owned and operated. ©2015



www.cbcadvisors.com

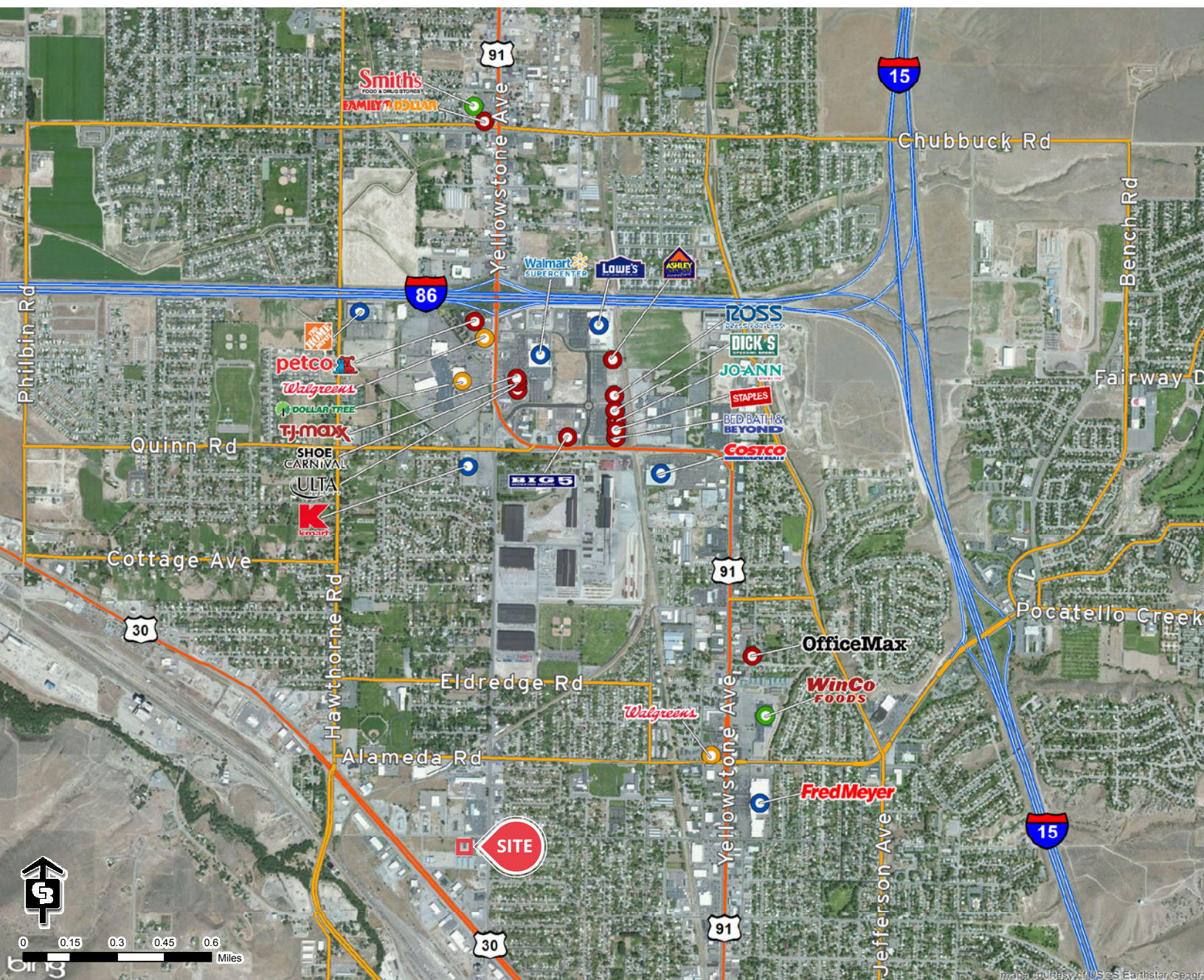


DON ZEBE
P 208.403.1973
don.zebe@cbcadvisors.com

SPENCER WARD
P 208.241.5710
spencer.ward@cbcadvisors.com

CBC ADVISORS | 2043 E CENTER ST | POCATELLO, ID | (P) 208.403.1973 | (F) 801.947.8301

This statement with the information it contains is given with the understanding that all negotiations relating to the purchase, renting, or leasing of the property described above shall be conducted through this office. The information while not guaranteed has been secured from sources we believe to be reliable. Each office is independently owned and operated. ©2015



www.cbcadvisors.com



DON ZEBE
P 208.403.1973
don.zebe@cbcadvisors.com

SPENCER WARD
P 208.241.5710
spencer.ward@cbcadvisors.com

CBC ADVISORS | 2043 E CENTER ST | POCATELLO, ID | (P) 208.403.1973 | (F) 801.947.8301

This statement with the information it contains is given with the understanding that all negotiations relating to the purchase, renting, or leasing of the property described above shall be conducted through this office. The information while not guaranteed has been secured from sources we believe to be reliable. Each office is independently owned and operated. ©2015