

FOR LEASE

MS VAN BUREN II

BUSINESS PARK

DEVELOPED BY: SILAGI DEVELOPMENT
& MANAGEMENT, INC. // 1.805.402.4515



VAN BUREN BLVD. & MERIDIAN PKWY., RIVERSIDE, CA
12 Industrial/Showroom Buildings Totaling ±151,781 SF



SLABS POURED!



March Air Reserve Base



Click Here For Video



Click Here For 360/VR Photo

Future Development

Please Contact:

WWW.SILAGISOCAL.COM



R. MARIO CALVILLO
DRE#: 01911573 // 951.276.3657
MCAVILLO@LEERIVERSIDE.COM

GARRY JENKINS
DRE#: 02008115 // 951.276.3621
GJENKINS@LEERIVERSIDE.COM

No warranty or representation has been made to the accuracy of the foregoing information. Terms of sale or lease and availability are subject to change or withdrawal without notice. Lee & Associates Commercial Real Estate Services, Inc. - Riverside. 3240 Mission Inn Avenue, Riverside, CA 92507 | Corporate DRE#: 01048055

FOR LEASE

MS VAN BUREN II

BUSINESS PARK

DEVELOPED BY: SILAGI DEVELOPMENT & MANAGEMENT, INC. // 1.805.402.4515



Building #	1	2	3	4	5	6	7	8	9	10	11	12	Retail
Unit SF	5,000 to 25,930	9,420	14,140	8,980	7,180	2,400 to 9,600	3,000 to 12,000	3,000 to 12,000	3,300 to 19,661	9,520	10,830	12,520	1,800 to 9,054

Please Contact:

WWW.SILAGISOCAL.COM



R. MARIO CALVILLO
 DRE#: 01911573 // 951.276.3657
MCALVILLO@LEERIVERSIDE.COM

GARRY JENKINS
 DRE#: 02008115 // 951.276.3621
GJENKINS@LEERIVERSIDE.COM

No warranty or representation has been made to the accuracy of the foregoing information. Terms of sale or lease and availability are subject to change or withdrawal without notice. Lee & Associates Commercial Real Estate Services, Inc. - Riverside. 3240 Mission Inn Avenue, Riverside, CA 92507 | Corporate DRE#: 01048055

FOR LEASE

MS VAN BUREN II BUSINESS PARK

DEVELOPED BY: SILAGI DEVELOPMENT
& MANAGEMENT, INC. // 1.805.402.4515



Building #	1	2	3	4	5	6	7	8	9	10	11	12	Retail
Total Building SF	25,930	9,420	14,140	8,980	7,180	9,600	12,000	12,000	19,661	9,520	10,830	12,520	9,054
Acres	1.88	0.48	0.82	0.68	0.45	0.73	1.12	1.19	2.11	2.11	2.11	2.11	1.39
Auto Parking	44	19	24	16	14	28	47	36	98	42	46	54	47
Zoning	MU	MU	MU	MU	MU	MU	MU	MU	MU	MU	MU	MU	MU
Clear Height	16'	18'	18'	18'	18'	16'	16'	16'	16'	12'	12'	12'	12'
Power (AMPS) - 277/480 Volt (Expandable)	200 Per Unit	400	400	400	200 Per Unit	200 Per Unit	200 Per Unit	200 Per Unit	200 Per Unit	200 Per Unit	200 Per Unit	200 Per Unit	200 Per Unit
GL Doors (12x14)	1 Per Unit	1 Per Unit	1 Per Unit	1 Per Unit	1 Per Unit	1 Per Unit	1 Per Unit	1 Per Unit	1 Per Unit	1 Glass Door	1 Glass Door	1 Glass Door	N/A
ESFR Sprinkler	Yes	Yes	Yes	Yes	Yes	Yes	Yes	Yes	Yes	Yes	Yes	Yes	Yes
Master Plan Association	Yes	Yes	Yes	Yes	Yes	Yes	Yes	Yes	Yes	Yes	Yes	Yes	Yes

Please Contact:

WWW.SILAGISOCAL.COM



R. MARIO CALVILLO
DRE#: 01911573 // 951.276.3657
MCAVILLO@LEERIVERSIDE.COM

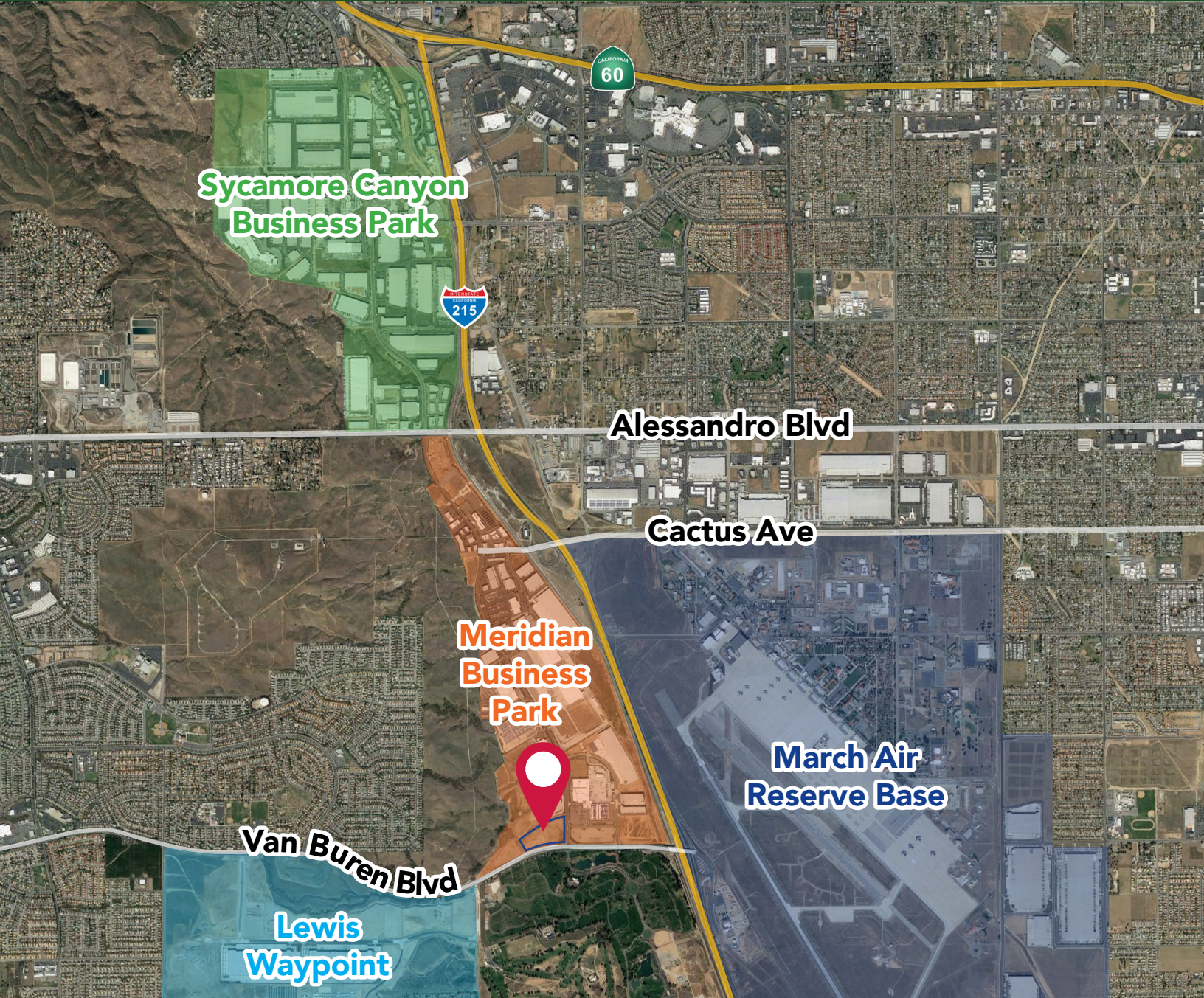
GARRY JENKINS
DRE#: 02008115 // 951.276.3621
GJENKINS@LEERIVERSIDE.COM

No warranty or representation has been made to the accuracy of the foregoing information. Terms of sale or lease and availability are subject to change or withdrawal without notice. Lee & Associates Commercial Real Estate Services, Inc. - Riverside. 3240 Mission Inn Avenue, Riverside, CA 92507 | Corporate DRE#: 01048055

FOR LEASE

MS VAN BUREN II BUSINESS PARK

DEVELOPED BY: SILAGI DEVELOPMENT
& MANAGEMENT, INC. // 1.805.402.4515



Please Contact:

WWW.SILAGISOCAL.COM



R. MARIO CALVILLO
DRE#: 01911573 // 951.276.3657
MCALVILLO@LEERIVERSIDE.COM

GARRY JENKINS
DRE#: 02008115 // 951.276.3621
GJENKINS@LEERIVERSIDE.COM

No warranty or representation has been made to the accuracy of the foregoing information. Terms of sale or lease and availability are subject to change or withdrawal without notice. Lee & Associates Commercial Real Estate Services, Inc. - Riverside. 3240 Mission Inn Avenue, Riverside, CA 92507 | Corporate DRE#: 01048055