



# WAREHOUSE SPACE FOR LEASE



**Alvis Industrial  
Park  
3002 B ST NW  
Auburn, WA 98001**

SUHRCO manages a diverse portfolio of commercial and multifamily residential properties in the Puget Sound region. Established in 1973, the company employs more than 300 experienced professionals dedicated to meeting the management, leasing and brokerage needs of building owners, tenants, and condominium/homeowner association boards and owners.

## FEATURES

- 3,330 SF warehouse/office
- Available immediately
- \$0.46 NNN
- Easy access from Hwy 167
- 1 grade level door and 1 dock high door

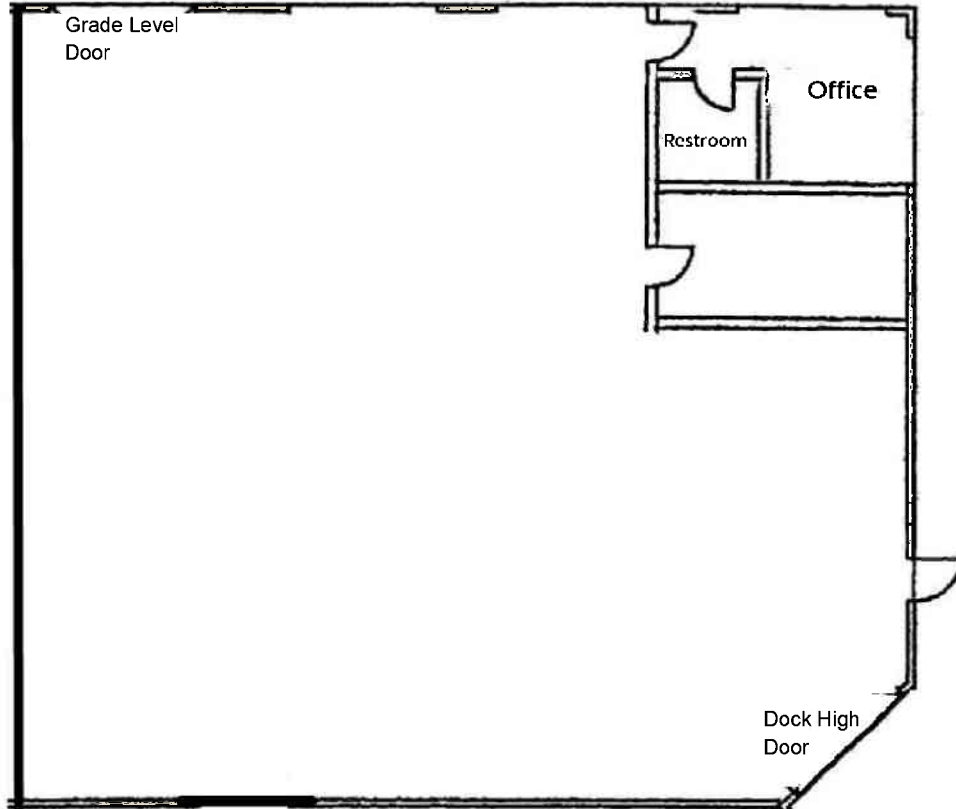
## Contact:

Peter Townsend, RPA® Email: [petert@suhrco.com](mailto:petert@suhrco.com)  
T: (425) 455-1950 F: (425) 462-1943  
2010 156th Avenue NE, Suite 100, Bellevue, WA 98007

**SUHRCO Management, Inc., AMO®**



# WAREHOUSE SPACE FOR LEASE



**Alvis Industrial Park  
3002 B ST NW, Auburn, WA 98001**

Contact:  
Peter Townsend, RPA® Email: [petert@suhrco.com](mailto:petert@suhrco.com)

T: (425) 455-1950  
F: (425) 462-1943  
2010 156th Avenue NE, Suite 100  
Bellevue, WA 98007

