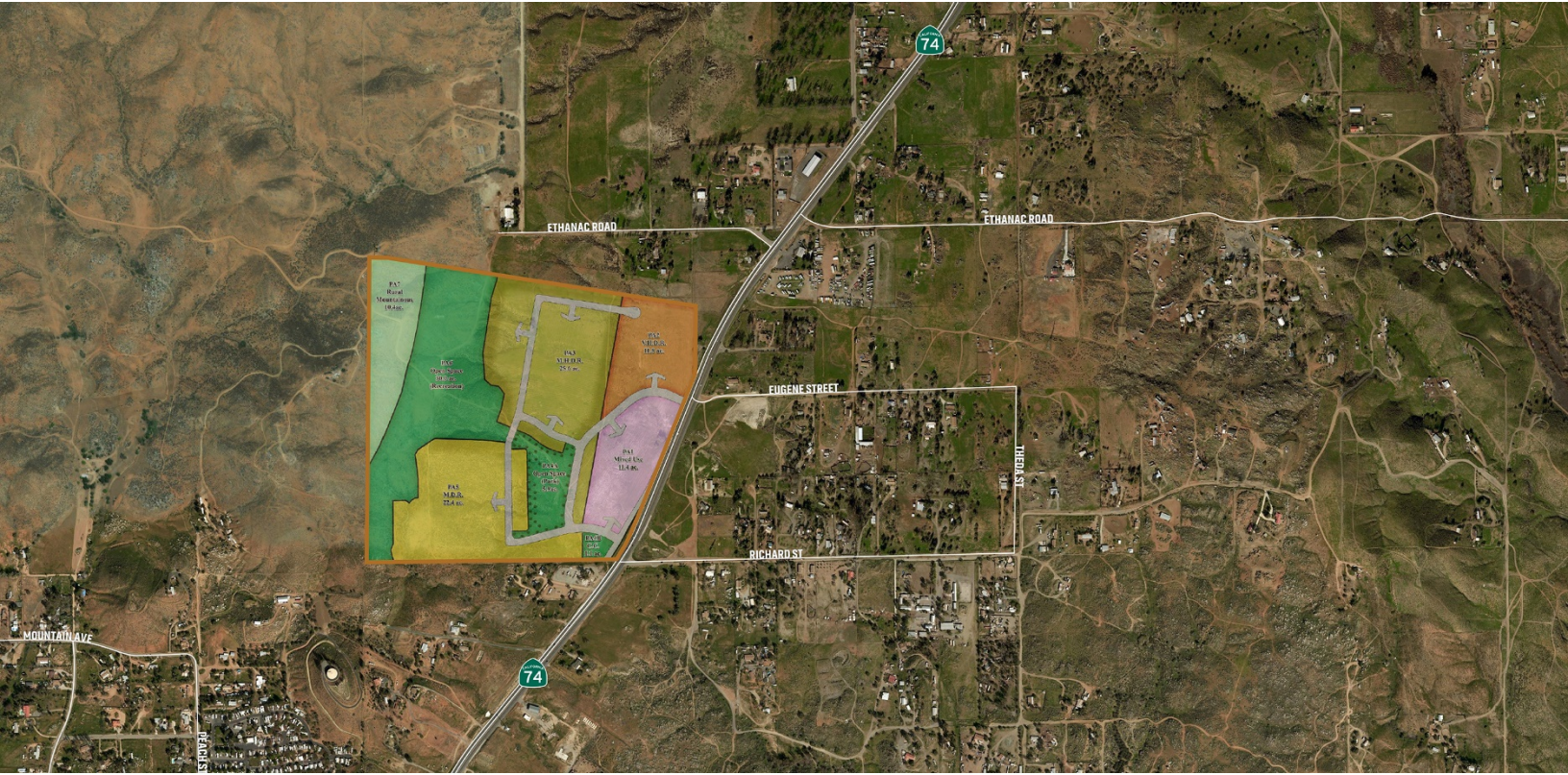


# COLINAS DEL ORO

Unincorporated Riverside County, CA



## PROPERTY OVERVIEW

The Colinas Del Oro Specific Plan and Tentative Tract Map No. 36450 were approved in August 2015 for ±486 units. It consists of 159 lots with a minimum lot size of 4,000 sf, 80 lots with a minimum lot size of 7,200 sf, and up to 247 “very high density residential” units. The Property also includes a central park, recreation center, and open space, with approximately 11 acres of mixed use retail and commercial uses along Highway 74.

- Located in the path of development along the future extension of Ethanac Road and Highway 74 between the cities of Perris and Lake Elsinore.
- Provides a flexible land use plan that can deliver a variety of product types, including single-family detached, courtyard cluster, and attached townhomes.
- Allows the delivery of affordable new homes within FHA loan limits.
- Positioned adjacent two of the most active new home submarket in West Riverside County (Menifee and Lake Elsinore).

## QUICK FACTS

PROJECT SIZE	486 Units
ENTITLEMENTS	TTM Approved
SITE CONDITION	Unimproved
OFFERS DUE	August 16, 2018



[VIEW MAP](#)



[REQUEST MORE INFO](#)

EXCLUSIVELY LISTED BY:

**Brian Carricaburu** | [bcarricaburu@landadvisors.com](mailto:bcarricaburu@landadvisors.com) | **Ian Sinderhoff** | [isinderhoff@landadvisors.com](mailto:isinderhoff@landadvisors.com)  
**Andrew Sinderhoff** | [asinderhoff@landadvisors.com](mailto:asinderhoff@landadvisors.com)

100 Spectrum Center Drive, Suite 1400, Irvine, California 92618 | 949.852.8288 | [www.landadvisors.com](http://www.landadvisors.com)

The information contained herein is from sources deemed reliable. We have no reason to doubt its accuracy but do not guarantee it. It is the responsibility of the person reviewing this information to independently verify it. This package is subject to change, prior sale or complete withdrawal. CalBRE#01225173

