

CLASS A WEST VALLEY OFFICE BUILDING  
PREMIER BUILDING SIGNAGE

2880 STEVENS CREEK BLVD

SAN JOSE, CA

±7,940 SF - ±16,472 SF Available

**NEWMARK**

Tracey Solari

408.987.4148

[tracey.solari@nmrk.com](mailto:tracey.solari@nmrk.com)

CA RE LICENSE # 01269780

Shawn Kellenberger

408.987.4170

[shawn.kellenberger@nmrk.com](mailto:shawn.kellenberger@nmrk.com)

CA RE LICENSE #01706215

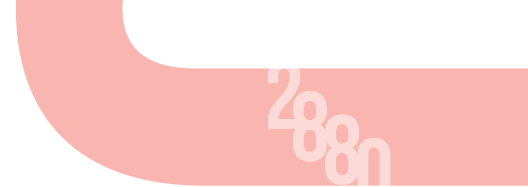


- ▶ 1st Floor: Suite 101 - ± 7,940 SF Plug N'Play
- ▶ 3rd Floor: ± 16,472 SF (Available 3/1/2023)
- ▶ High Identity Location on Stevens Creek Blvd adjacent to Santana Row
- ▶ Newly Remodeled Ground Floor and 3rd Floor Lobby and Restrooms
- ▶ Full Access to Santana Row and Westfield Mall Amenities
- ▶ On-site Garage Parking
- ▶ Wellness Feature: Each level has a Private Entrance to the Building and Private Lobby
- ▶ Unmatched Access to Highway 17/880, Highway 280 and San Tomas Expressway
- ▶ Prominent Monument Signage and Building Signage on Stevens Creek Blvd
- ▶ Large Exterior Courtyard Area for Outdoor Seating/Dining
- ▶ Showers On-Site

HIGHLIGHTS



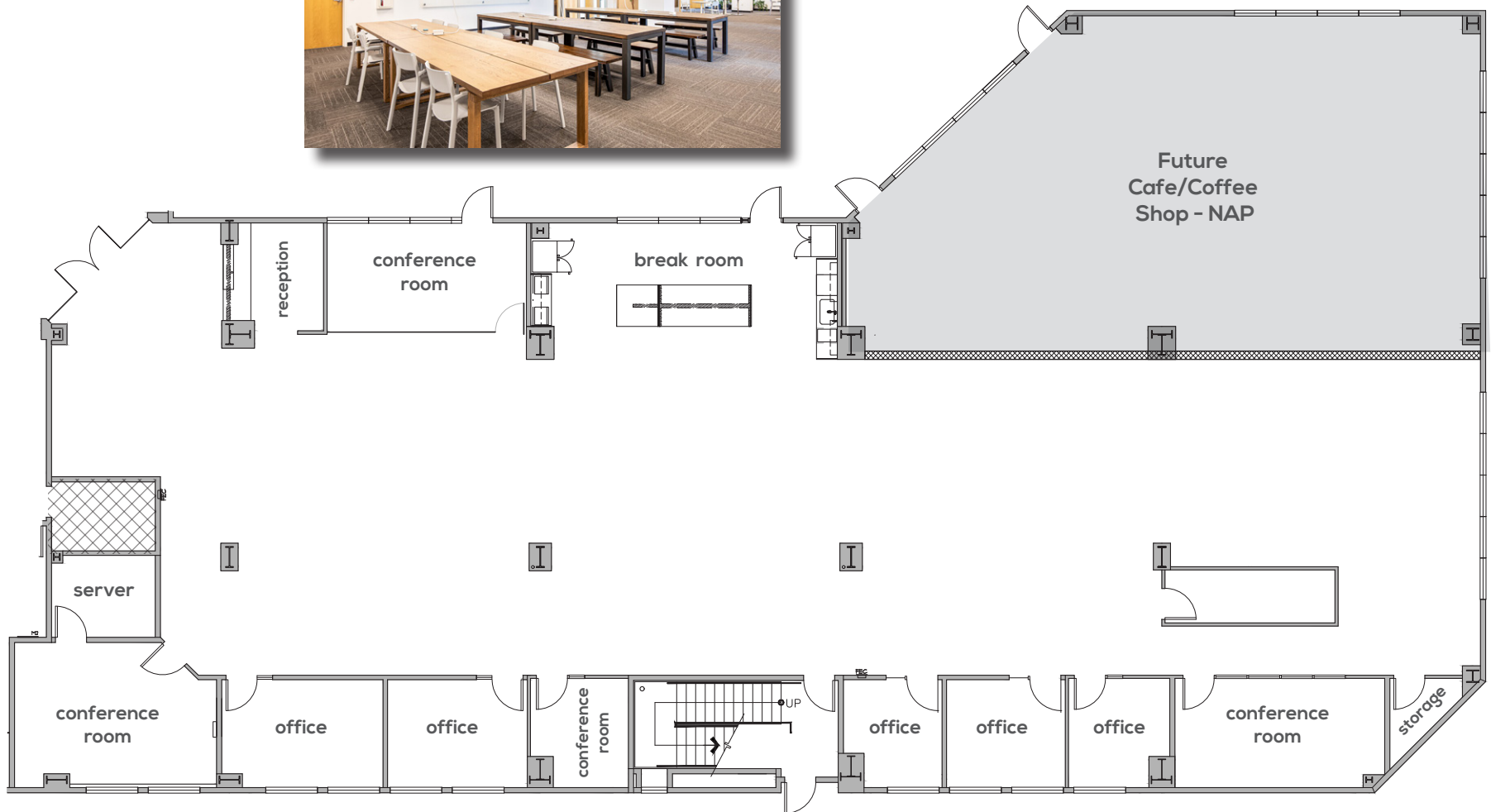
# Floorplan



## FIRST FLOOR

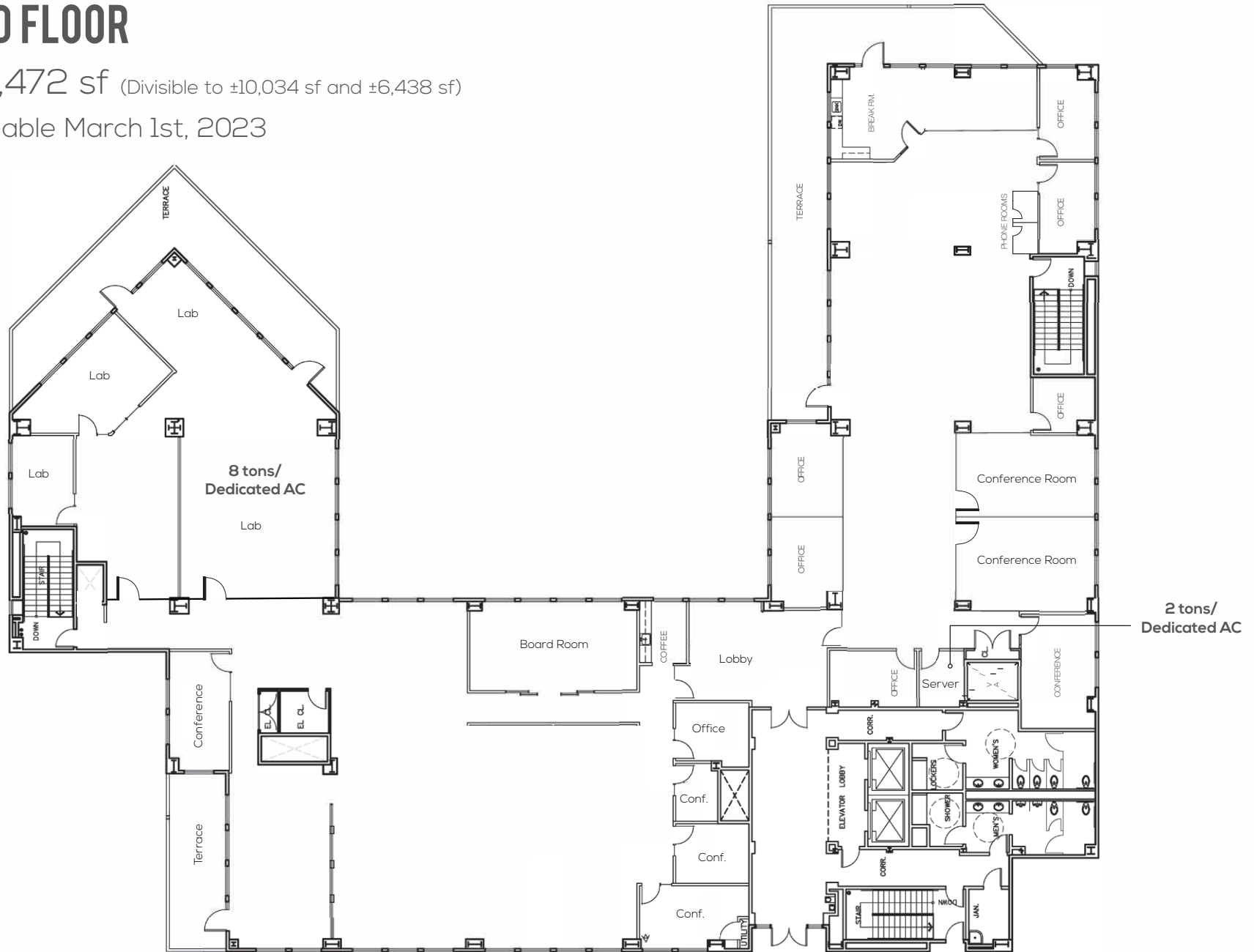
• ±7,940 sf

Suite 101



# THIRD FLOOR

- ±16,472 sf (Divisible to ±10,034 sf and ±6,438 sf)
- Available March 1st, 2023





# Amenities

2880



2880  
STEVENS CREEK  
BLVD

SANTANA ROW

Crate&Barrel

Yard House

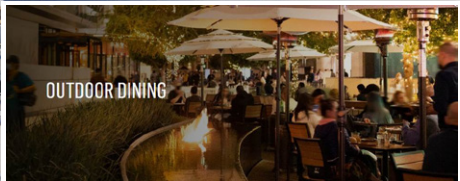
Stevens Creek Blvd

Pedestrian Connections  
Between New 10-Restaurant  
Promenade & Santana Row

New Mall Entrance

blomingdale's

Apple  
Store



OUTDOOR DINING

Westfield

The  
Cheesecake  
Factory

New High-end Restaurants  
& Promenade

TIFFANY & CO.

SHAKE SHACK

SALT & STRAW





macy's

KING'S  
FISH HOUSE



Transportation



-  VTA LINE
-  ACE LINE
-  CALTRAIN LINE
-  FUTURE BART LINE



2880

STEVENS CREEK BLVD  
SAN JOSE, CA



Tracey Solari  
408.987.4148  
tracey.solari@nmrk.com

CA RE LICENSE # 01269780

Shawn Kellenberger  
408.987.4170  
shawn.kellenberger@nmrk.com

CA RE LICENSE #01706215

**NEWMARK**

The distributor of this communication is performing acts for which a real estate license is required. The information contained herein has been obtained from sources deemed reliable but has not been verified and no guarantee, warranty or representation, either express or implied, is made with respect to such information. Terms of sale or lease and availability are subject to change or withdrawal without notice. 3055 Olin Avenue, Suite 2200, San Jose, CA 95128 | 20-0606 - 10/22