

14400 INKSTER ROAD
ROMULUS, MICHIGAN

INDUSTRIAL / LAND FOR SALE
2,538 Square Feet / 15.22 Acres

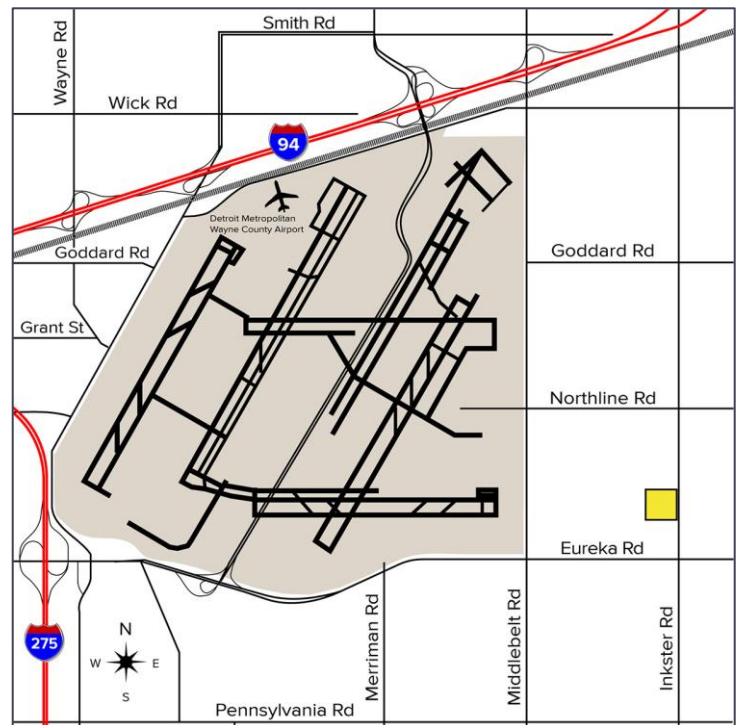


**SIGNATURE
ASSOCIATES**
KNOW SIGNATURE | KNOW RESULTS



PROPERTY FEATURES

- 2,538 square foot building
- 15.22 acres of land included in sale
- Zoned M-1, light industrial
- (2) 10x8 grade level doors
- Over 2.5 paved acres and over 2 acres cleared
- Over 200 parking spaces for vehicle storage
- Business included in the sale of the property
- Sanitary, storm, and water on site at vacant land
- Sale price: \$850,000



For more information, please contact:

JUSTIN GAFFREY
(248) 799 3143
jgaffrey@signatureassociates.com

ALEX TIMMIS
(248) 359 0623
atimmis@signatureassociates.com

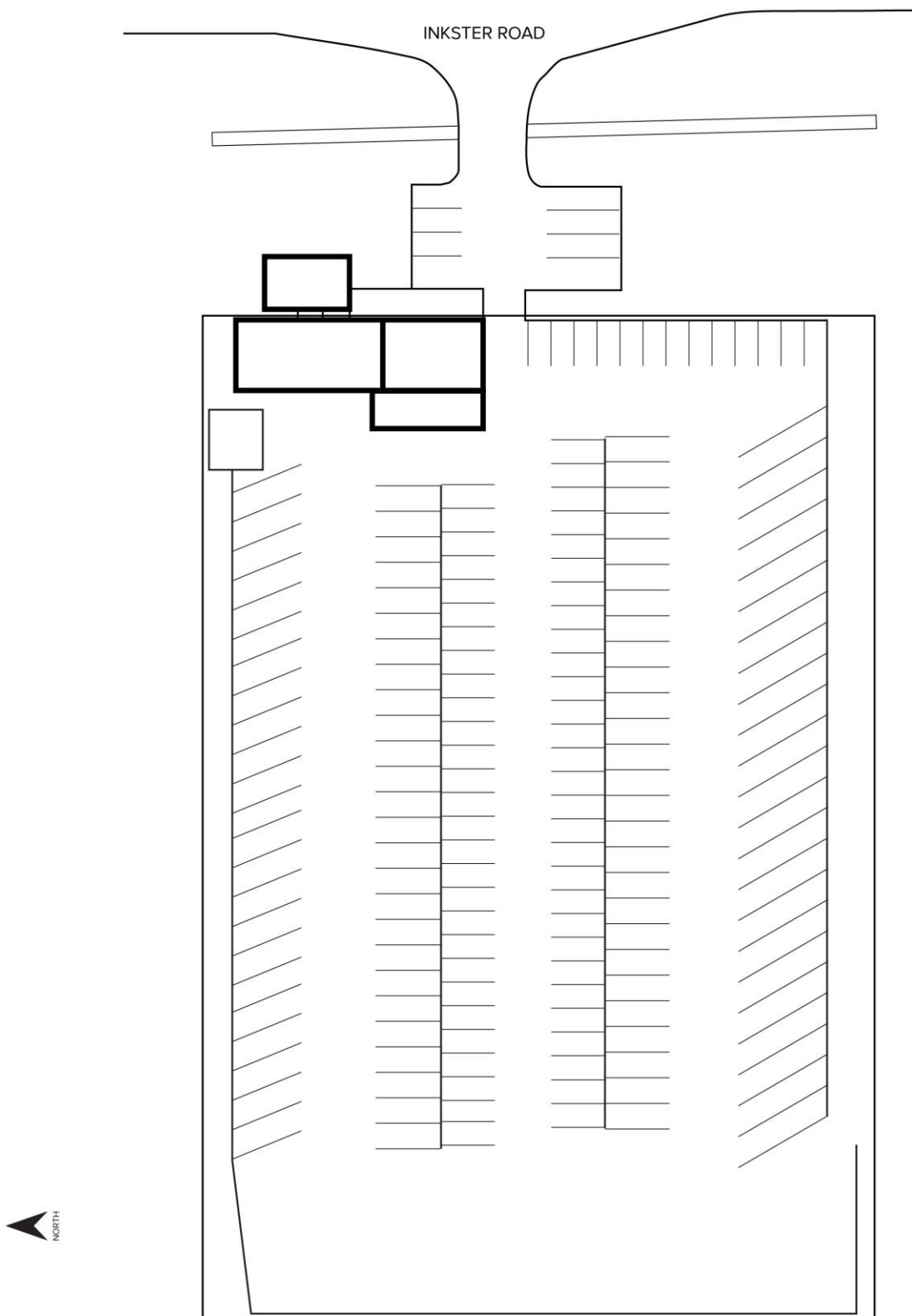
SIGNATURE ASSOCIATES
One Towne Square, Suite 1200
Southfield, MI 48076
www.signatureassociates.com

14400 Inkster Road – Romulus, Michigan

Industrial / Land For Sale

2,538
Square Feet /
15.22
Acres
AVAILABLE

Site Plan



For more information, please contact:

JUSTIN GAFFREY
(248) 799 3143
jgaffrey@signatureassociates.com

ALEX TIMMIS
(248) 359 0623
atimmis@signatureassociates.com

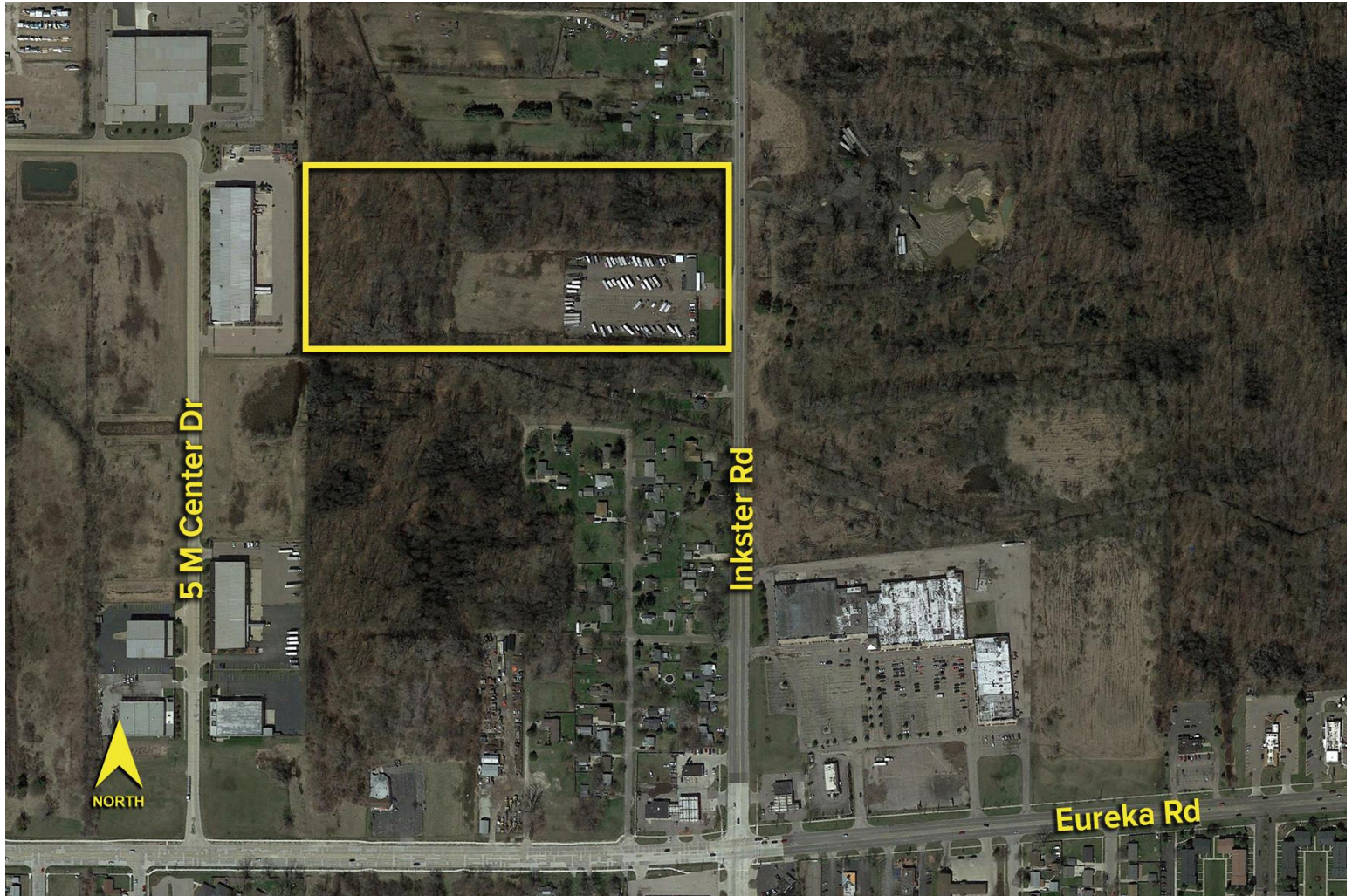
SIGNATURE ASSOCIATES
One Towne Square, Suite 1200
Southfield, MI 48076
www.signatureassociates.com

14400 Inkster Road – Romulus, Michigan

Industrial / Land For Sale

2,538
Square Feet /
15.22
Acres
AVAILABLE

Aerial



For more information, please contact:

JUSTIN GAFFREY
(248) 799 3143
jgaffrey@signatureassociates.com

ALEX TIMMIS
(248) 359 0623
atimmis@signatureassociates.com

SIGNATURE ASSOCIATES
One Towne Square, Suite 1200
Southfield, MI 48076
www.signatureassociates.com