

# ERSI

ESSENCE  
REAL ESTATE  
SERVICES INC.

COMMERCIAL REAL ESTATE SINCE 1990

# FOR LEASE



## NORTH OAKS OFFICE

200-400 VILLAGE CENTER DR. ● NORTH OAKS, MN 55127

- 2,100 SF AVAILABL
- FANTASTIC LANDSCAPING & AESTHETIC APPEAL
- FRIENDLY CAMPUS SETTING
- IDAL FOR PROFESSIONAL OFFICE, MEDICAL & SERVICE
- SECURITY CARD ACCESS AFTER HOURS
- EXCELLENT ACCESS TO HWY 96, 35E, 35W & I-694
- MANY AREA AMENITIES INCLUDING: CARIBOU, KOWALSKI'S, WALGREENS, BRUEGGERS, PANINO'S, SHOREVIEW CC, LIBRARY, AND OTHER RETAIL

## CONTACT:

[WWW.ESSENCEREALESTATE.COM](http://WWW.ESSENCEREALESTATE.COM)

**JEFF NORDNESS**  
jeff@essencerealestate.com  
**651-341-5044**

# NORTH OAKS

200-400 VILLAGE CENTER DR. • MN 55127

## BUILDING DETAILS:

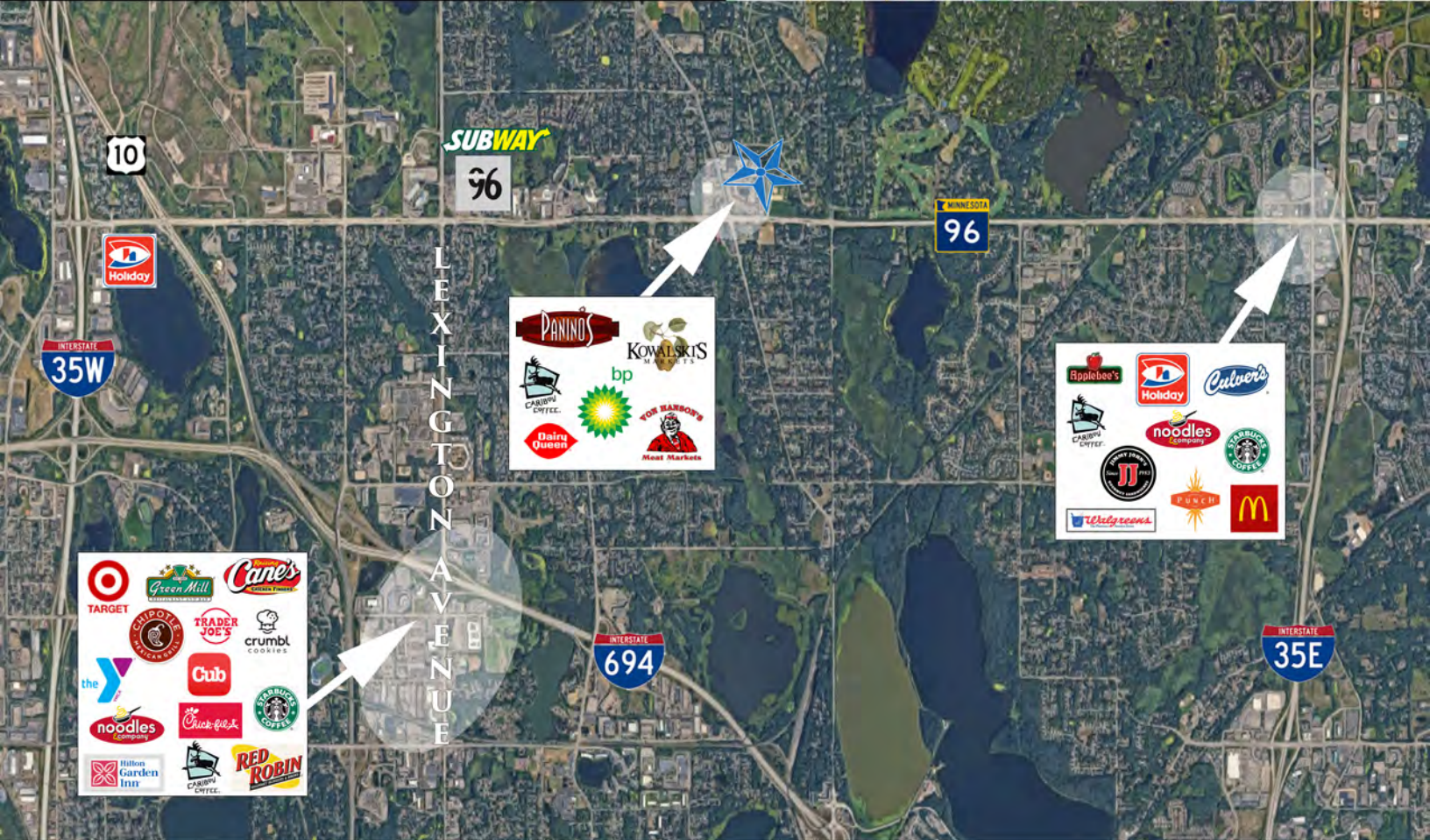
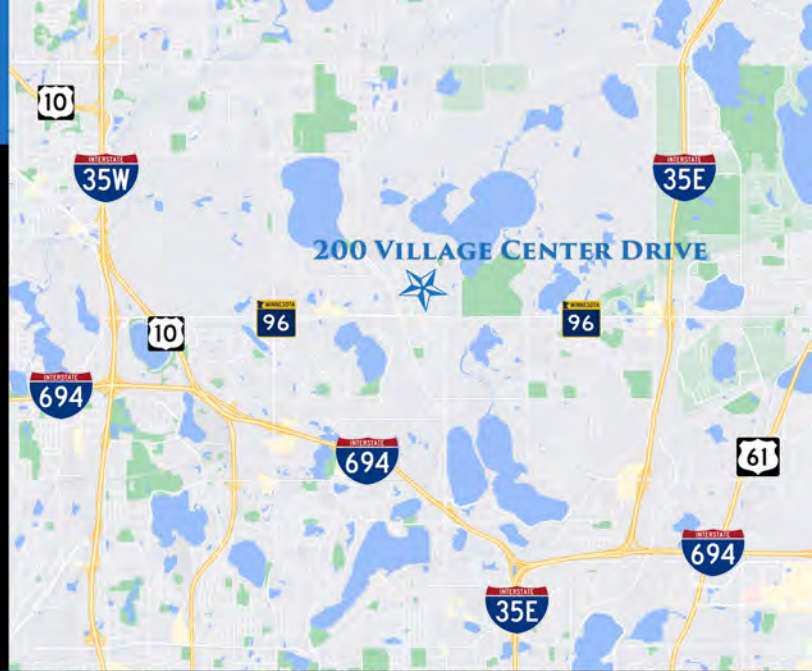
OFFICE NET RENT:  
2023 EST. OP. EXP.  
(EXCLUDES GAS & SUITE CLEANING)

NEGOTIABLE  
\$12.30 SF

SPACE AVAILABLE:

SUITE 100

2,100 SF



IDEAL FOR PROFESSIONAL OFFICE, MEDICAL & SERVICE

# ERSI

ESSENCE  
REAL ESTATE  
SERVICES INC.

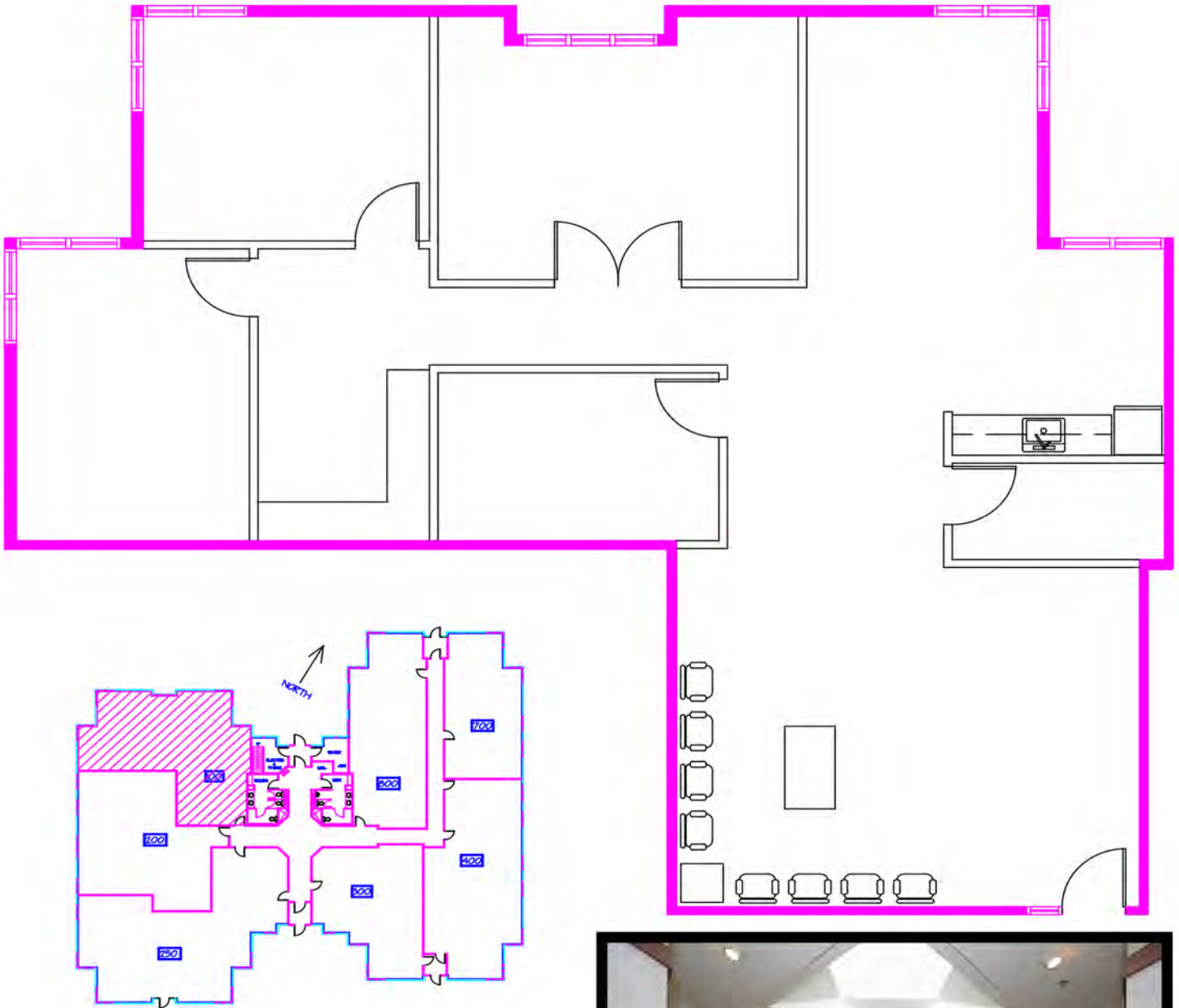
COMMERCIAL REAL ESTATE SINCE 1990

JEFF NORDNESS  
651-341-5044  
jeff@essencerealestate.com

OFFICE: 651-482-1871

# NORTH OAKS OFFICE

200 - 400 VILLAGE CENTER DR ● NORTH OAKS, MN 55127



**ERSI**  
COMMERCIAL REAL ESTATE SINCE 1990

ESSENCE  
REAL ESTATE  
SERVICES INC.

JEFF NORDNESS  
651-341-5044  
jeff@essencerealestate.com

OFFICE: 651-482-1871