



PUBLIC LEDGER

600 Chestnut Street Philadelphia, PA



Classic Meets Contemporary

- Dynamic new ownership
- Major capital improvements underway
- Amazing potential for creative build-out with exposed ceilings and historic features
- Abundant natural light
- Flexible floorplates
- New retail amenities including Super Wawa open now

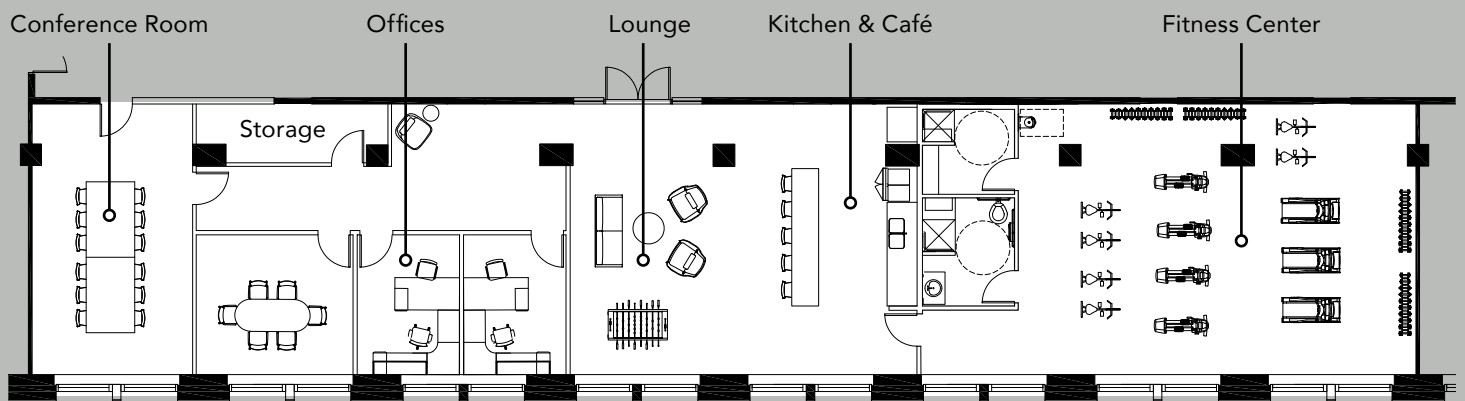


Street to suite upgrades underway

- Lobby upgrades
- Elevator modernization
- Common corridor updates
- New bathrooms
- Top of the line construction and finishes
- Elegant combination of historic architecture and contemporary upgrades

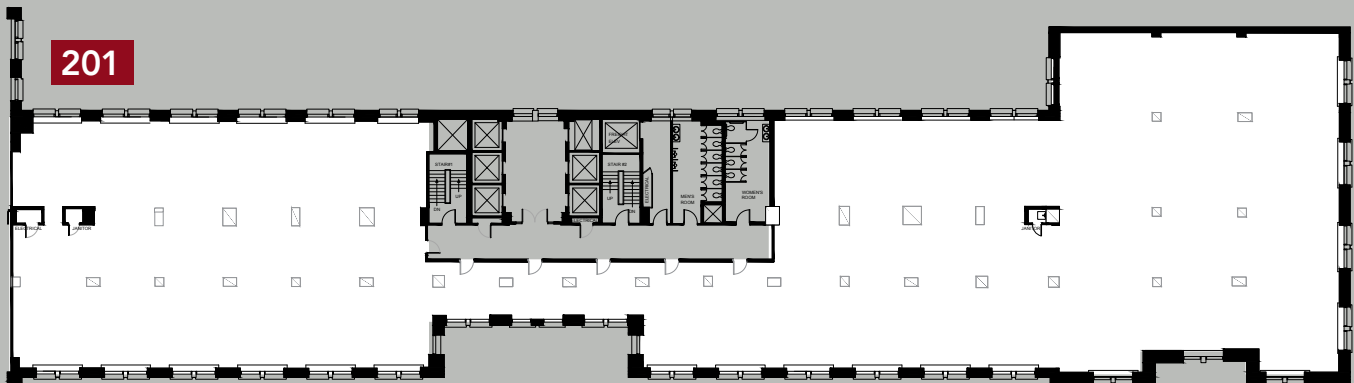
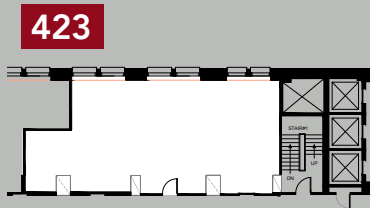
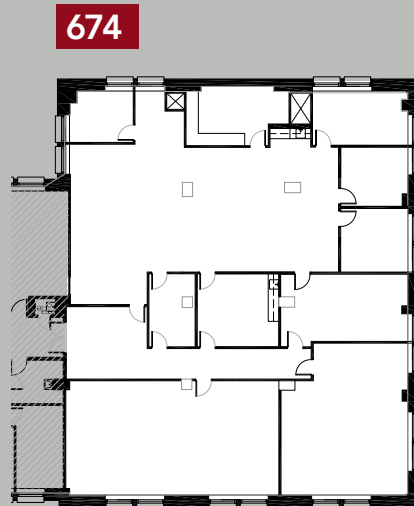
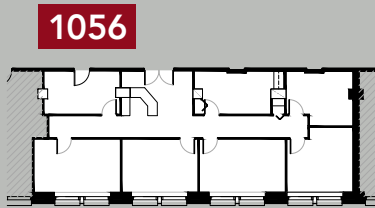
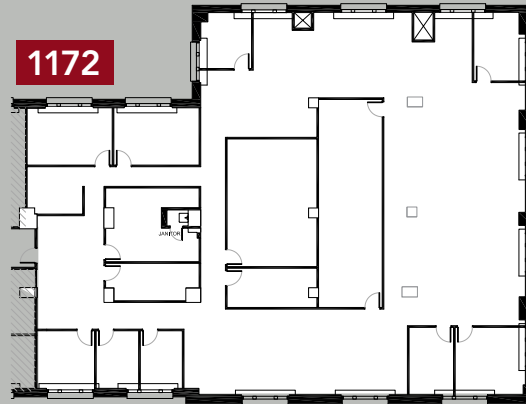


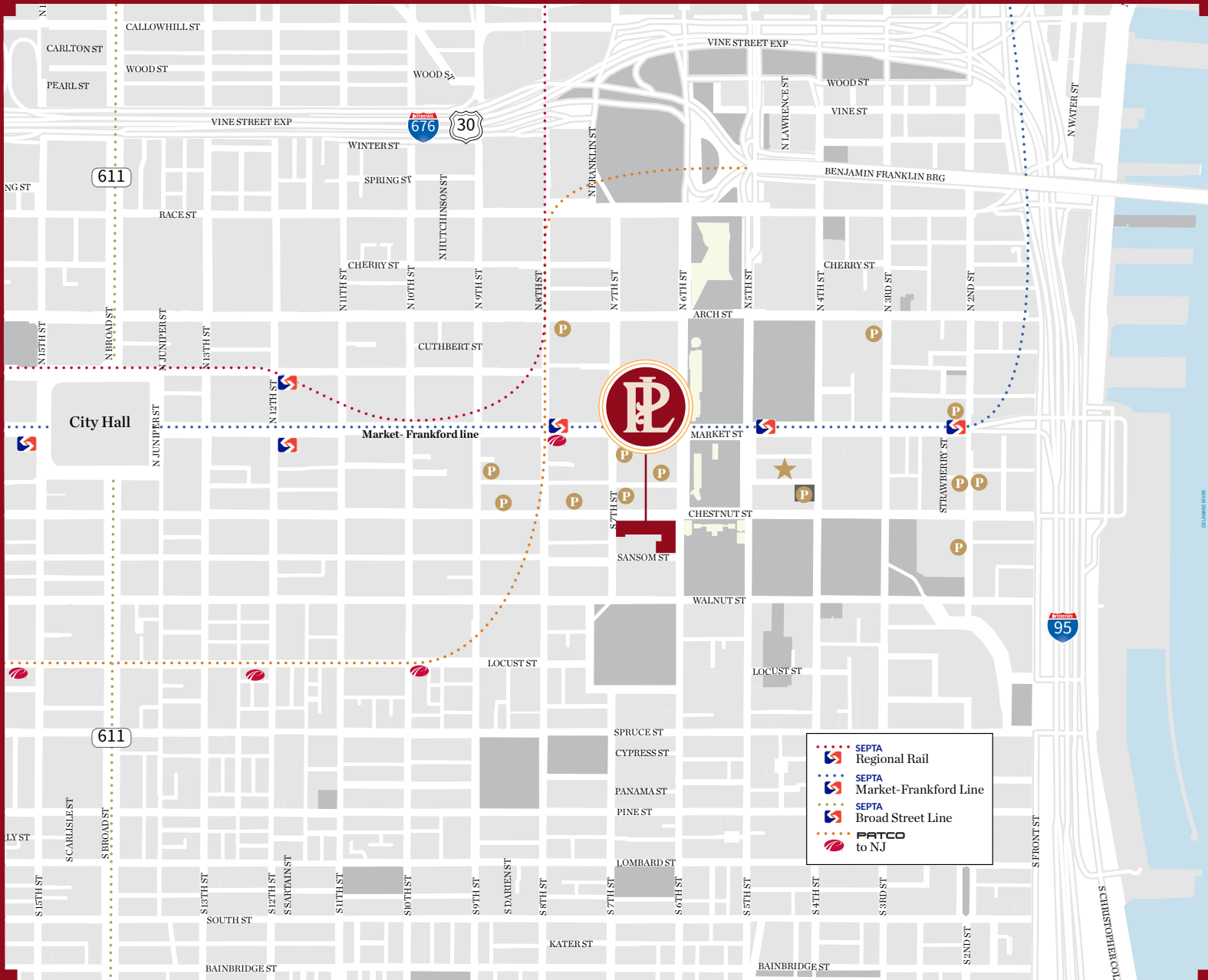
Conference Center & Fitness Center coming soon



Select Availabilities

Suite 1172	10,284 SF
Suite 1056	2,179 SF
Suite 674	7,494 SF
Suite 423	2,548 SF
Suite 201	20,295 SF





Location

Situated adjacent to Independence Mall, The Public Ledger Building offers one of Philadelphia's most desirable locations. With easy access to many of the city's top amenities, the building is a short walk to dozens of places to eat and drink, shops, entertainment destinations, and other highlights including many of the nation's most significant historical sites.



Walk Score
99



Transit Score
100



Bike Score
97

For leasing information, contact:

Alex Breitmayer
+1 215 399 1813
alex.breitmayer@am.jll.com

Mitch Marcus
+1 215 988 5514
mitch.marcus@am.jll.com

JLL | Jones Lang LaSalle
1650 Arch St. Suite 2500
Philadelphia PA 19103
+1 215 988 5500

