



For Sale

Location

1400 block of Spinks Drive,
Flower Mound

Offering

+/- 1.9 acres
Zoned Commercial-1

Flag shaped section
50,160 sq ft

Price

\$7.50 psf for 1.9 acres
\$7500 for smaller lot

Property Overview

Zoned Commercial-1

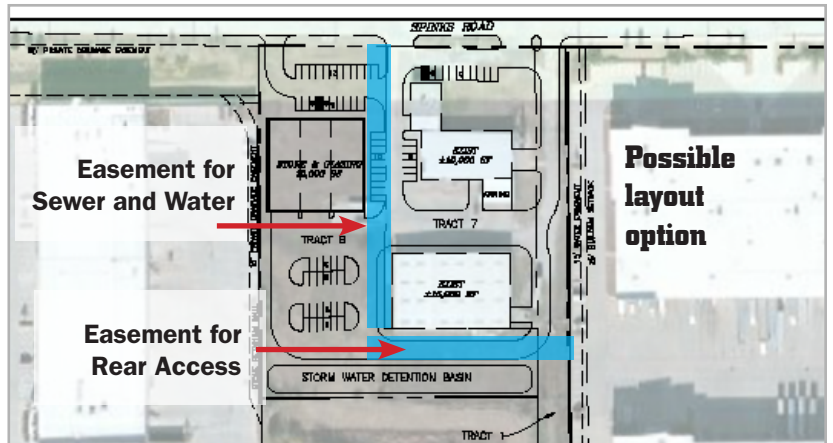
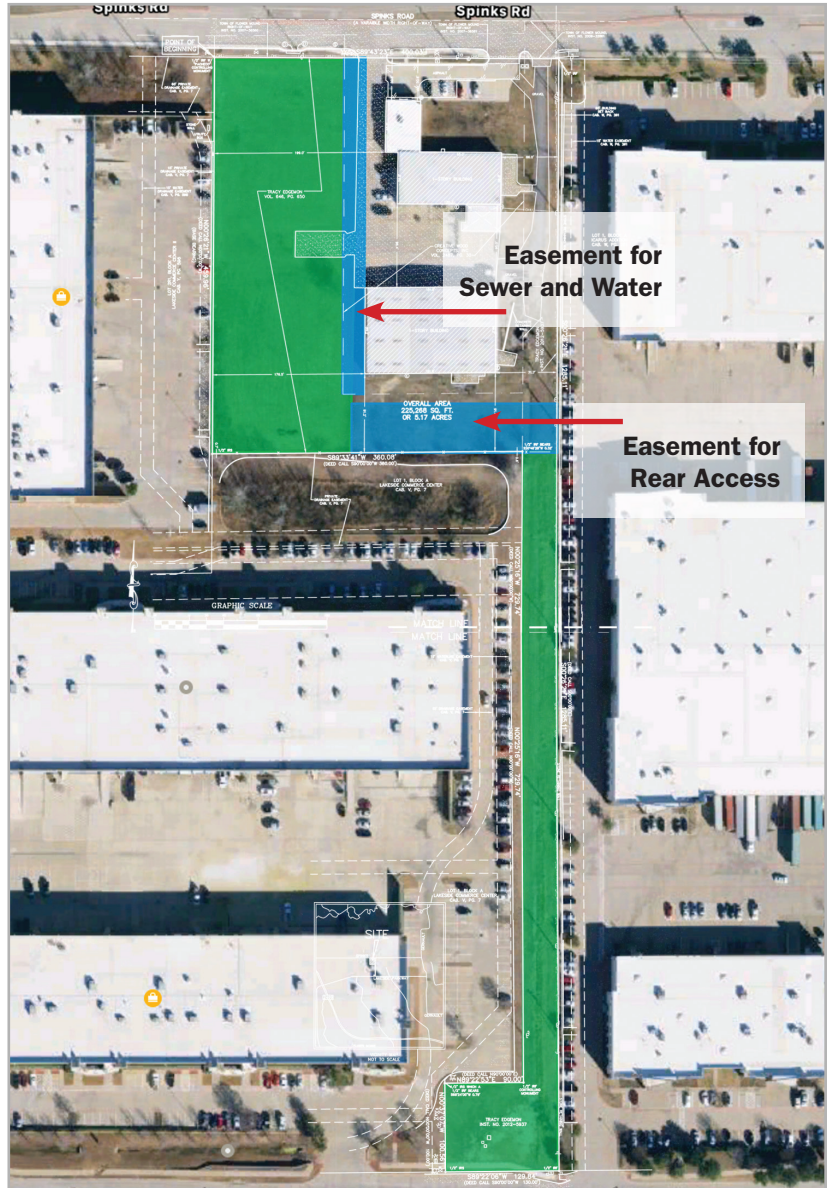
Features

- Utilities to property
- Existing Access Drive
- Potential for additional land for access to Lakeside Parkway

Contact

Todd Weaver
3505 Yucca Drive, Suite 100
Flower Mound, Texas 75028

todd@weavercommercial.com
469-635-2833 Office
469-635-2849 Fax



This information is believed to be accurate, but no representation or warranty, express or implied, as to its accuracy or completeness is made by Weaver Commercial Real Estate, Ltd. and/or its agents or any party. The presentation of this property is submitted subject to errors, omissions, change of price and prior sale or lease, or withdrawal from market without notice.