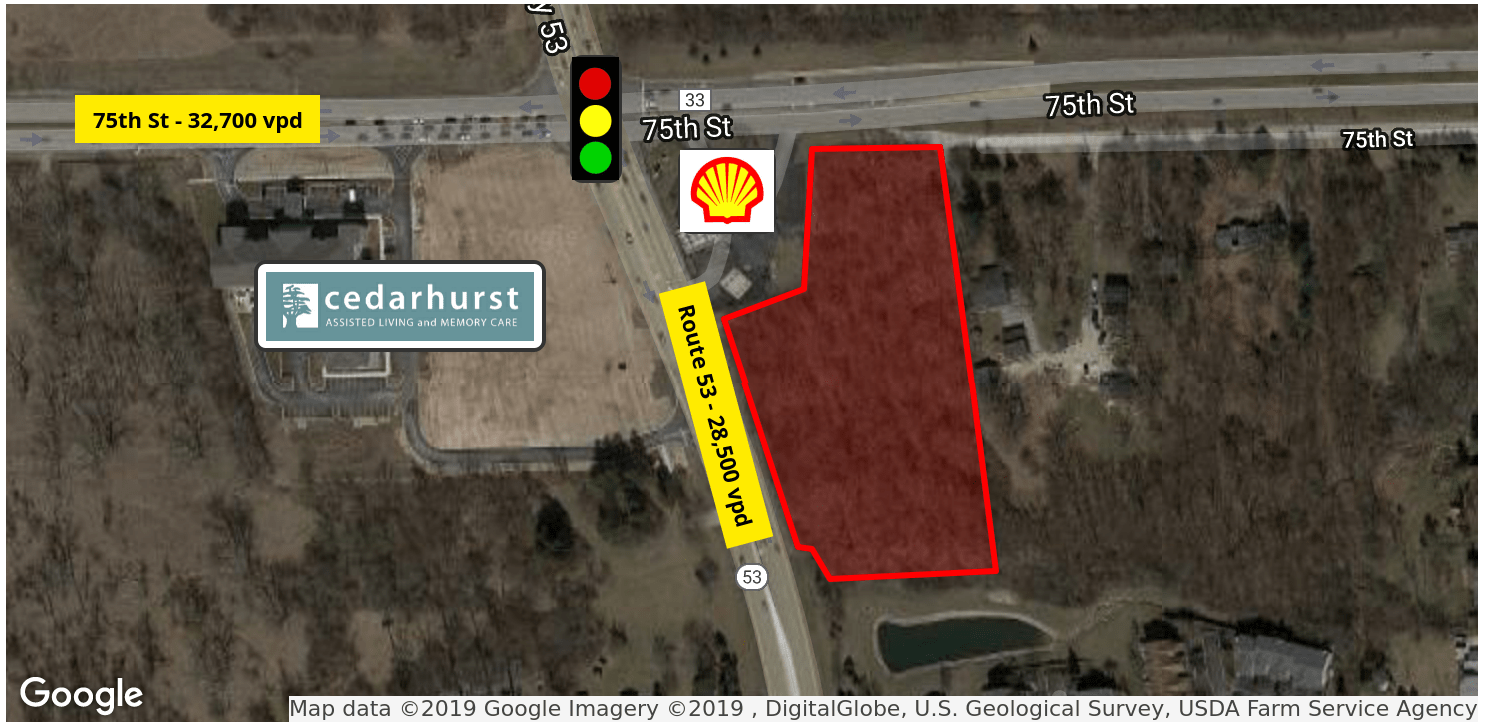


3.3 ACRE DEVELOPMENT SITE

SEC ROUTE 53 & 75TH ST, NAPERVILLE, IL 60517

LAND FOR SALE



PROPERTY HIGHLIGHTS

- 3.3 Acre development site in DuPage County
- 353 ft. of Frontage on Route 53 and 174 ft. on 75th St.
- Lot will be annexed into Woodridge for development
- Currently zoned R-3 Single Family

LOCATION OVERVIEW

Great location near restaurants, Cinemark, IMAX, Seven Bridges Golf Club, Edward-Elmhurst Health & Fitness. 1.25 miles to I-355 interchange.

DEMOGRAPHICS

	1 MILE	3 MILES	5 MILES
Total Households	3,689	36,309	92,784
Total Population	9,975	95,117	253,748
Average HH Income	\$90,128	\$94,937	\$100,937

SALE PRICE **\$799,000**

OFFERING SUMMARY

Lot Size: 3.3 Acres

County: DuPage

Zoning: R-3 Single Family

Price / SF: \$5.56

MARTHA WINTER

Senior Vice President
630.560.2902
MARTHA@LMTEAM.COM

Office Address: 361 S. Frontage Rd,
Suite 126
Burr Ridge, IL 60527
630.325.8338
LMTEAM.COM

3.3 ACRE DEVELOPMENT SITE

SEC ROUTE 53 & 75TH ST, NAPERVILLE, IL 60517

LM
Lagestee-Mulder
Commercial Real Estate

LAND FOR SALE



MARTHA WINTER
Senior Vice President
630.560.2902
MARTHA@LMTEAM.COM

Office Address: 361 S. Frontage Rd,
Suite 126
Burr Ridge, IL 60527
630.325.8338
LMTEAM.COM

Notice: Unless a Consent to Dual Agency has been signed by both parties to a transaction for this property Martha Winter represent(s) the Seller only, and not the Buyer.

