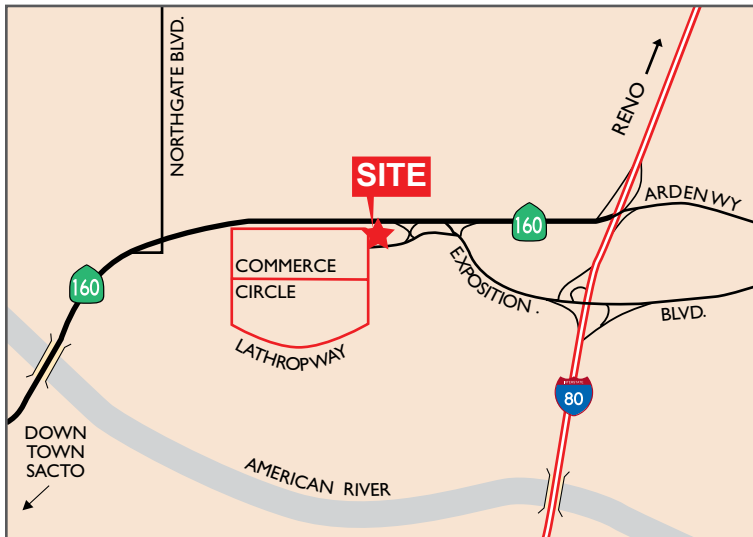


# Freestanding Office Building For Lease

355 Commerce Circle, Sacramento



## ±2,668 Square Feet Available



- ◆ For Lease
- ◆ Highway 160 Frontage
- ◆ Recently Updated Exterior
- ◆ Adjacent Land Available for Parking or Yard
- ◆ Large Open Space for meetings
- ◆ Convenient Location
- ◆ Abundant Parking
- ◆ Freeway Signage
- ◆ Floorplan on Reverse

**Skip Vanderbunt, SIOR** Senior Managing Director 916.569.2349 [skip@newmarkccarey.com](mailto:skip@newmarkccarey.com) CA RE License #00862313

**Sean Mahoney** Managing Director 916.569.2328 [smahoney@newmarkccarey.com](mailto:smahoney@newmarkccarey.com) CA RE License #01332661

## Newmark Cornish & Carey

980 9th St, Suite 2500, Sacramento, CA 95814

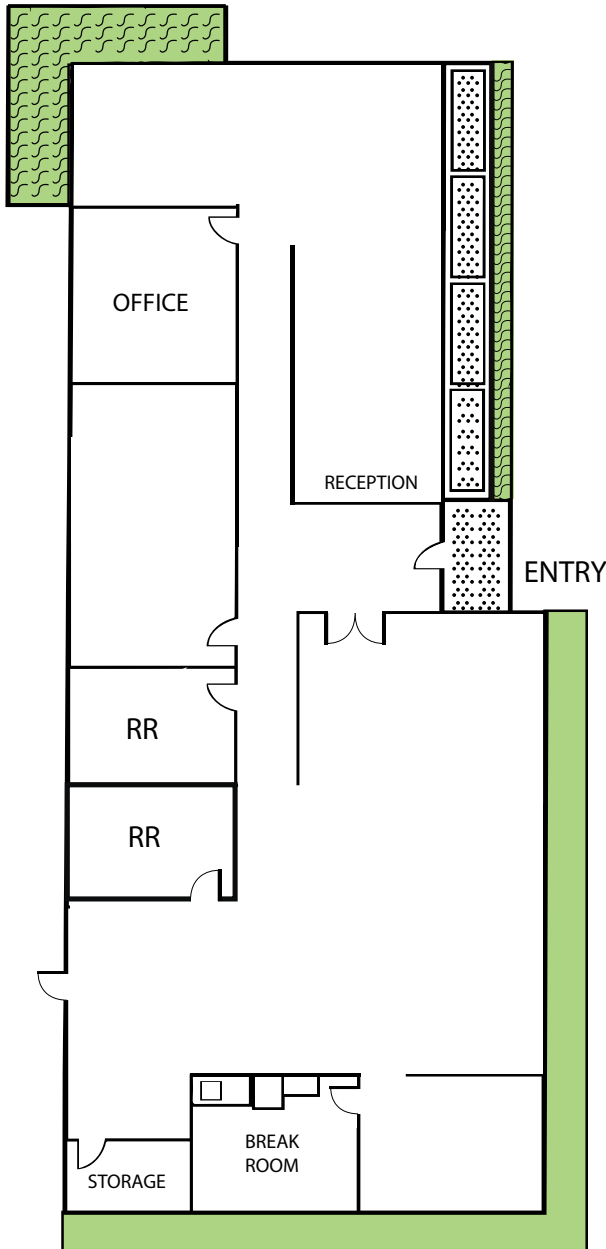
[www.newmarkccarey.com](http://www.newmarkccarey.com)

Procuring broker shall only be entitled to a commission, calculated in accordance with the rates approved by our principal only if such procuring broker executes a brokerage agreement acceptable to us and our principal and the conditions as set forth in the brokerage agreement are fully and unconditionally satisfied. Although all information furnished regarding property for sale, rental, or financing is from sources deemed reliable, such information has not been verified and no express representation is made nor is any to be implied as to the accuracy thereof and it is submitted subject to errors, omissions, change of price, rental or other conditions, prior sale, lease or financing, or withdrawal without notice and to any special conditions imposed by our principal.

15-0378-11/15

# Freestanding Office Building For Lease

355 Commerce Circle, Sacramento



**Skip Vanderbunt, SIOR** Senior Managing Director 916.569.2349 [skip@newmarkccarey.com](mailto:skip@newmarkccarey.com) CA RE License #00862313

**Sean Mahoney** Managing Director 916.569.2328 [smahoney@newmarkccarey.com](mailto:smahoney@newmarkccarey.com) CA RE License #01332661

**Newmark  
Cornish & Carey**

980 9th St, Suite 2500, Sacramento, CA 95814

[www.newmarkccarey.com](http://www.newmarkccarey.com)

Procuring broker shall only be entitled to a commission, calculated in accordance with the rates approved by our principal only if such procuring broker executes a brokerage agreement acceptable to us and our principal and the conditions as set forth in the brokerage agreement are fully and unconditionally satisfied. Although all information furnished regarding property for sale, rental, or financing is from sources deemed reliable, such information has not been verified and no express representation is made nor is any to be implied as to the accuracy thereof and it is submitted subject to errors, omissions, change of price, rental or other conditions, prior sale, lease or financing, or withdrawal without notice and to any special conditions imposed by our principal.

15-0378-11/15