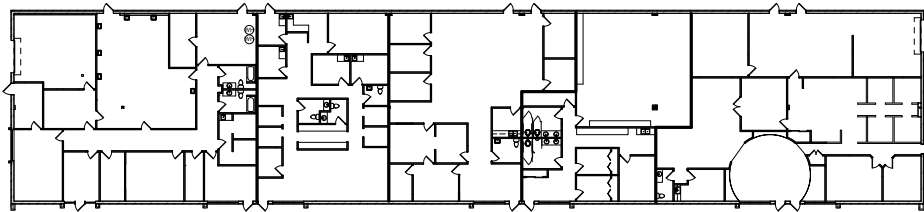


8109-23 Center Run Road, Indianapolis, IN 46250

## BUILDING 49

Exterior signage available, zoned CS, medical space and office space available

**\$11.50/SF, Plus  
Janitorial & Utilities**



SAMPLE FLOOR PLAN

## CASTLETON PARK



Outstanding location  
with easy access to  
I-465 & I-69



Access to an abundance  
of retail, restaurants  
& entertainment



Full Service daycare  
on-site



100-person conference  
facility available



On-site management  
& maintenance



Access to superior  
employee base



DAY CARE CENTER  
CONFERENCE CENTER

# Castleton Park

VALUE • AMENITIES • LOCATION



## FOR MORE INFORMATION, CONTACT:

**JOHN VANDENBARK**  
Senior Vice President  
+ 1 317 269 1046  
john.vandenbark@cbre.com

**CONNOR SCOTT**  
Associate  
+ 1 317 269 1076  
connor.scott@cbre.com

55

RESTAURANTS

6

BANKS

IMMEDIATE  
AREA  
AMENITIES

9

HOTELS

5.9  
MILLION SF

RETAIL

© 2017 CBRE, Inc. All rights reserved. This information has been obtained from sources believed reliable, but has not been verified for accuracy or completeness. Any projections, opinions, or estimates are subject to uncertainty. The information may not represent the current or future performance of the property. You and your advisors should conduct a careful, independent investigation of the property and verify all information. **Any reliance on this information is solely at your own risk.** CBRE and the CBRE logo are service marks of CBRE, Inc. and/or its affiliated or related companies in the United States and other countries. All other marks displayed on this document are the property of their respective owners. Photos herein are the property of their respective owners and use of these images without the express written consent of the owner is prohibited. PMStudio\_December2017