

Aerial / Location Map



Nick Clark
Retail Specialist
+1 801 303 5430
nclark@comre.com

Katie Mikula
Associate
+1 801 303 5497
kmikula@comre.com

170 South Main Street Suite 1600
Salt Lake City, UT 84101
Main +1 801 322 2000
Fax +1 801 322 2040
comre.com

Independently Owned and Operated / A Member of the Cushman & Wakefield Alliance
Cushman & Wakefield Copyright 2015. No warranty or representation, express or implied, is made to the accuracy or completeness of the information contained herein, and same is submitted subject to errors, omissions, change of price, rental or other conditions, withdrawal without notice, and to any special listing conditions imposed by the property owner(s). As applicable, we make no representation as to the condition of the property (or properties) in question.
(path: G:\1 - Projects\Clark, Nick\1 - Flyers\4700sRedwoodRd)



Fresh Market anchored center located on the SWC of 4700 South and Redwood Road

Property Highlights

- One block away from Salt Lake Community College main campus
- Total Center Size: 134,000 SF
- Available Space: 975 - 9,657 SF
- Tax, Ins., and CAM: \$4.52
- Redwood ADT: 34,550
- 4700 South ADT: 41,400
- Anchored by:



SLATE

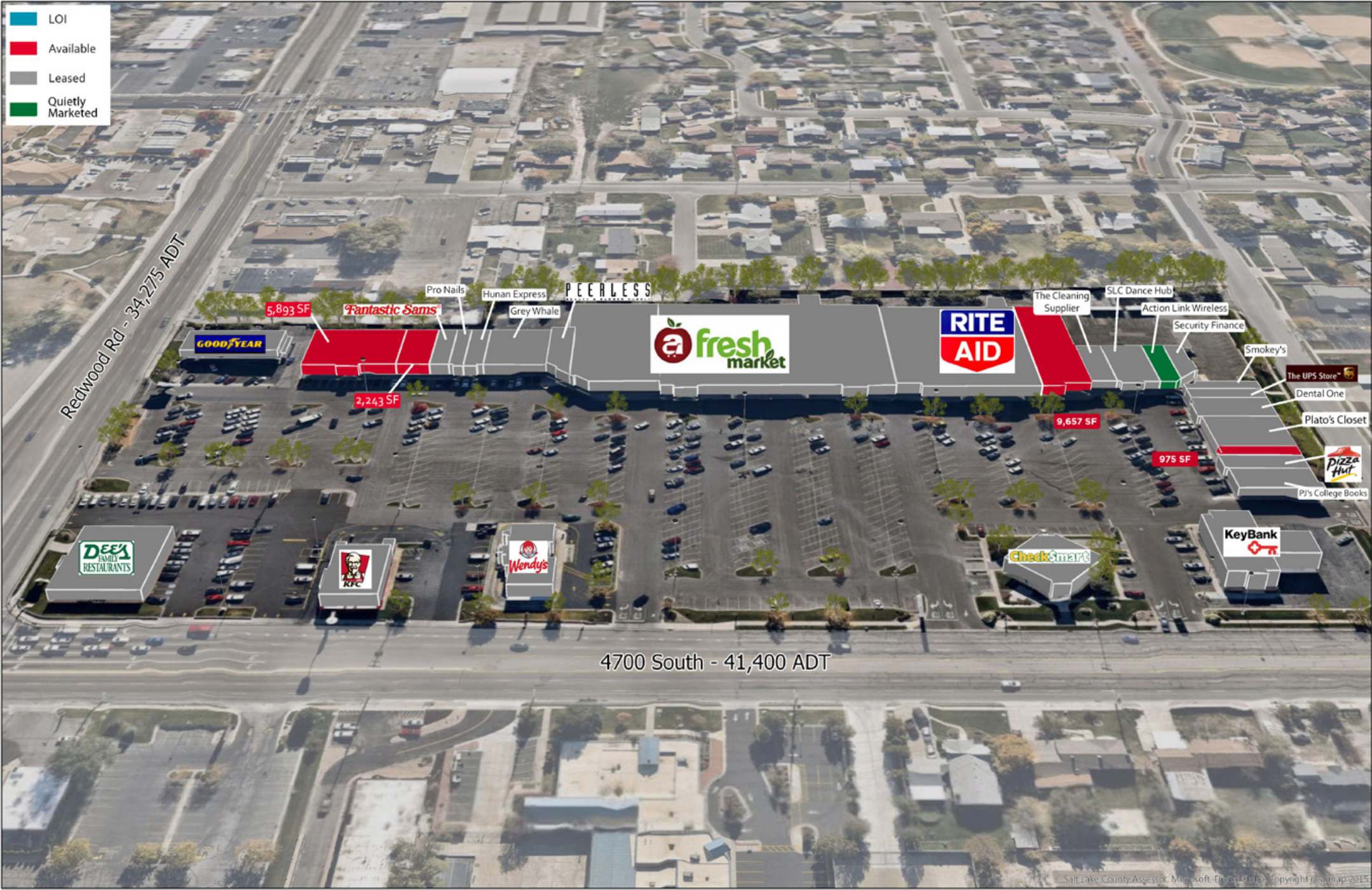
Nick Clark
Retail Specialist
+1 801 303 5430
nclark@comre.com

Katie Mikula
Associate
+1 801 303 5497
kmikula@comre.com



170 South Main Street Suite 1600
Salt Lake City, UT 84101
Main +1 801 322 2000
Fax +1 801 322 2040
comre.com

Independently Owned and Operated / A Member of the Cushman & Wakefield Alliance



Tenant Directory

Tenant	SF
Key Bank	3,274
Check Smart	2,500
Wendy's	3,500
Goodyear	4,660
AVAILABLE	5,893
AVAILABLE	2,243
Fantastic Sams	1,300
Pro Nails	975
Hunan Express	1,300
Graywhale Entertainment	4,323
Peerless Beauty	1,691
Fresh Market	55,589
Rite Aid	22,181
AVAILABLE- Rite Aid Excess space	9,657
Cleaning Supplies	1,814
LEASED	2,761
Action Link Wireless	1,463
Security Finance	1,482
Smokey's	938
The UPS Store	1,300
Dental One	2,275
Plato's Closet	3,575
AVAILABLE	975

Demographics

	1 Mile	3 Mile	5 Mile
Population			
2016 Estimated Population	15,485	146,440	389,160
2021 Projected Population	16,101	153,031	406,909
Households			
2016 Estimated Households	5,575	48,760	129,878
2021 Projected Households	5,792	51,049	135,967
2016 Est. Median HH Income	\$53,982	\$53,273	\$53,313
2016 Est. Average HH Income	\$65,696	\$65,200	\$65,300
2016 Est. Per Capita HH Income	\$23,476	\$21,980	\$22,076

Source: U.S. Census Bureau, Census 2010 Data. Esri forecasts for 2016 and 2021.

