

FOR LEASE

1451 KALANI STREET UNIT B1

HONOLULU, HI 96817



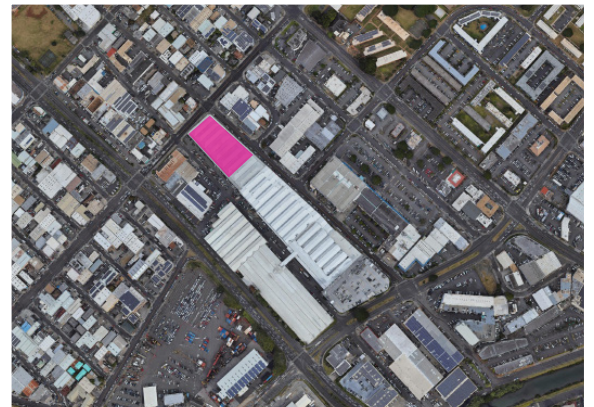
PROPERTY FEATURES

- + Large footprint in town extremely close to the harbor
- + Small offices inside warehouse with restrooms
- + 3 roll-up doors
- + 18 ft clear height
- + Access is from Hart, Kalani, and Kalihi St



PROPERTY DETAILS

SIZE:	40,220 SF
BASE RENT:	Negotiable
CAM:	\$0.36 PSF/mo.
ZONING:	IMX-1
PARKING:	31 stalls



CONTACT US

KAIONE CRABB

Associate
+1 808 541 5165
kaione.crabb@cbre.com
Lic. RS-77910

NICHOLAS T. ADLER

Associate
+1 808 541 5149
nicholas.adler@cbre.com
Lic. RS-78419

www.cbre.us/hawaii

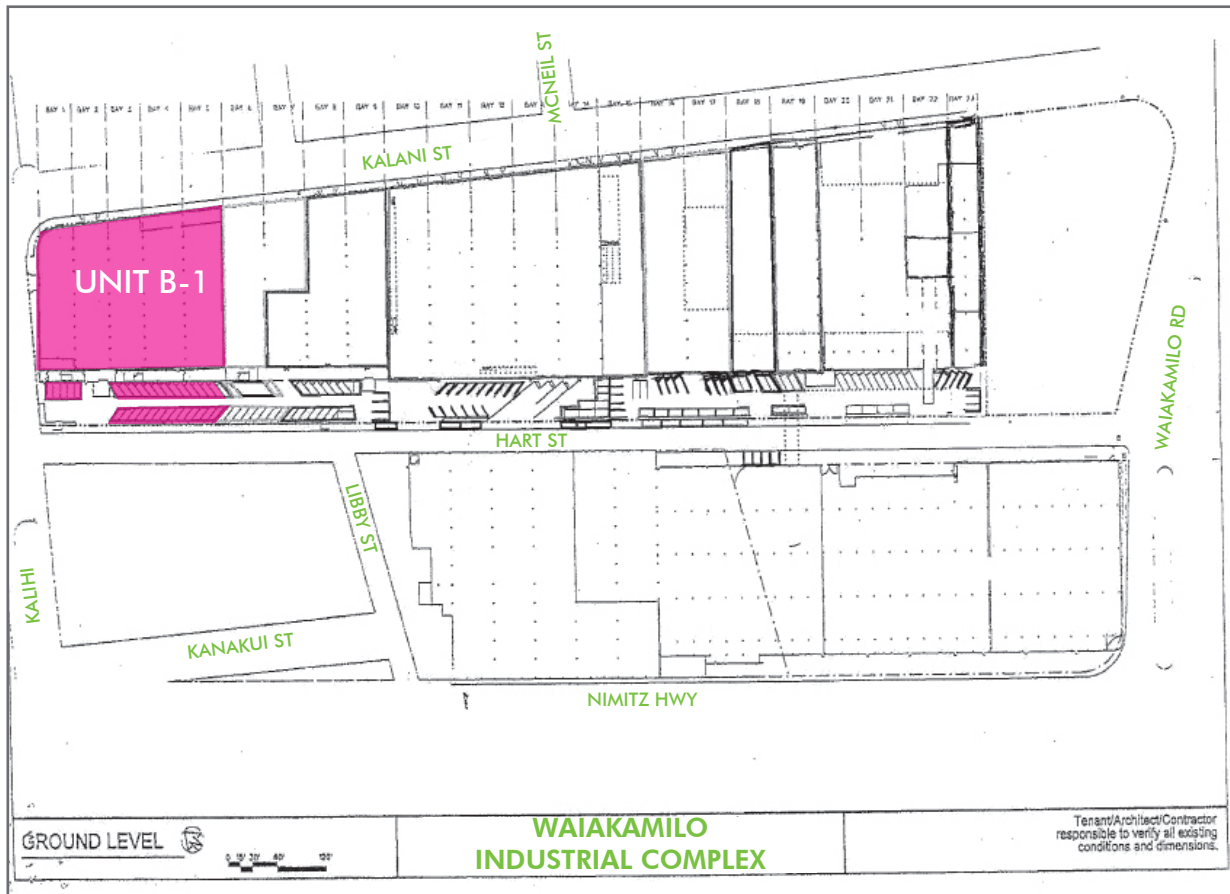
CBRE
LIC. RB-20142

FOR LEASE 1451 KALANI STREET

UNIT B1



SITE PLAN



© 2020 CBRE, Inc. All rights reserved. This information has been obtained from sources believed reliable, but has not been verified for accuracy or completeness. You should conduct a careful, independent investigation of the property and verify all information. Any reliance on this information is solely at your own risk. CBRE and the CBRE logo are service marks of CBRE, Inc. All other marks displayed on this document are the property of their respective owners. Photos herein are the property of their respective owners. Use of these images without the express written consent of the owner is prohibited.

NA:RMP_1451KalaniStUnitB1_05.21.20