

AVAILABLE

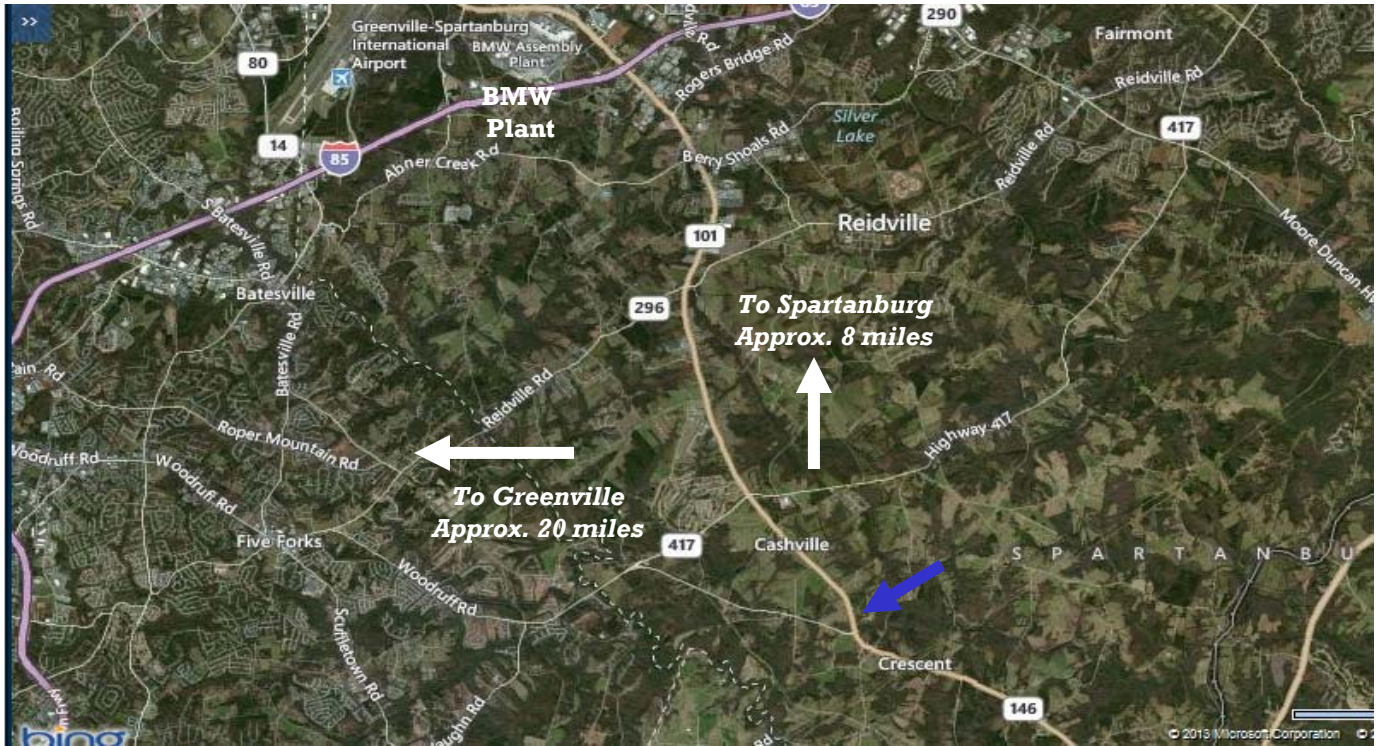
4751 Hwy 101

Woodruff, SC

Site Analysis

Commercial Sales

Development



- 40+/- acres located on Highway 101 in Woodruff
- SC Tax Map # 4-11-00-015.00
- Close to I-85 & BMW Distribution Center
- Approximately 5 miles from Highway 221
- 1630 ± road frontage on Hwy. 101
- Priced below appraised value
- Motivated, out of state owners

Sale Price:
\$15,000 per acre



No warranty or representation, expressed or implied, is made to the accuracy of the information contained herein, and the same is submitted subject to errors, omissions, change of price, rental or other conditions, imposed by the principles.



Contact information

Andy Hayes/Ben Hines, CFP, CCIM

380 S. Pine Street

Spartanburg, SC 29302

Tel 864.583.1001 C - 864-706-0189

Fax 864.585.6188

ahayes@spencerhines.com

benhines@spencerhines.com

www.spencerhines.com