

## Lake City Professional Center

2611 NE 125th Street  
Seattle, WA

Beautifully restored 1935 brick  
school house

Completely renovated in 1986

Excellent I-5 North/South access

Close to Lake City shopping  
and amenities

New mechanical systems  
throughout

Office and medical  
spaces available

Shared conference rooms and  
common kitchen

Parking: 4 stalls/1,000 rsf - free

Available spaces:

Suites 1/3: 2,897 SF (divisible)

Suite 122: 600 SF

Suite 145: 3,888 SF (divisible)

Suite 225: 2,183 SF



### Location



### Contact

**Ken Hirata**

206.296.9625

khirata@kiddermathews.com

**Todd Battison**

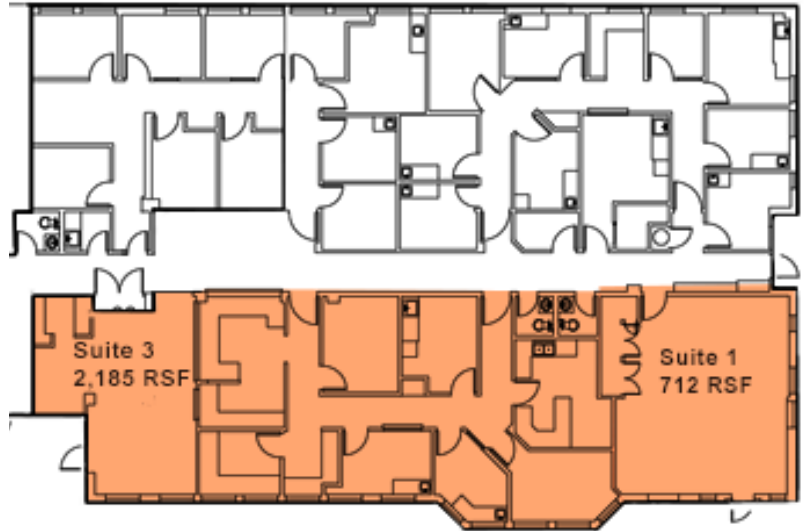
206.296.9621

toddb@kiddermathews.com

## Lake City Professional Center

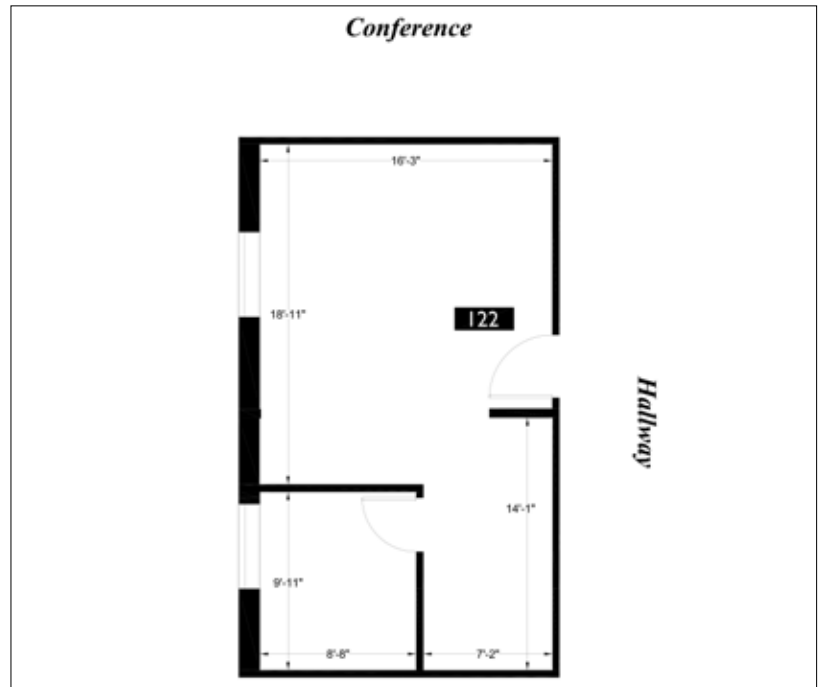
### First Floor

Suites 1/3: 2,897 RSF (Divisible to 712 RSF)



### First Floor

Suite 122: 600 RSF



### Contact

**Ken Hirata**  
206.296.9625  
khirata@kiddermathews.com

**Todd Battison**  
206.296.9621  
toddb@kiddermathews.com

## Lake City Professional Center

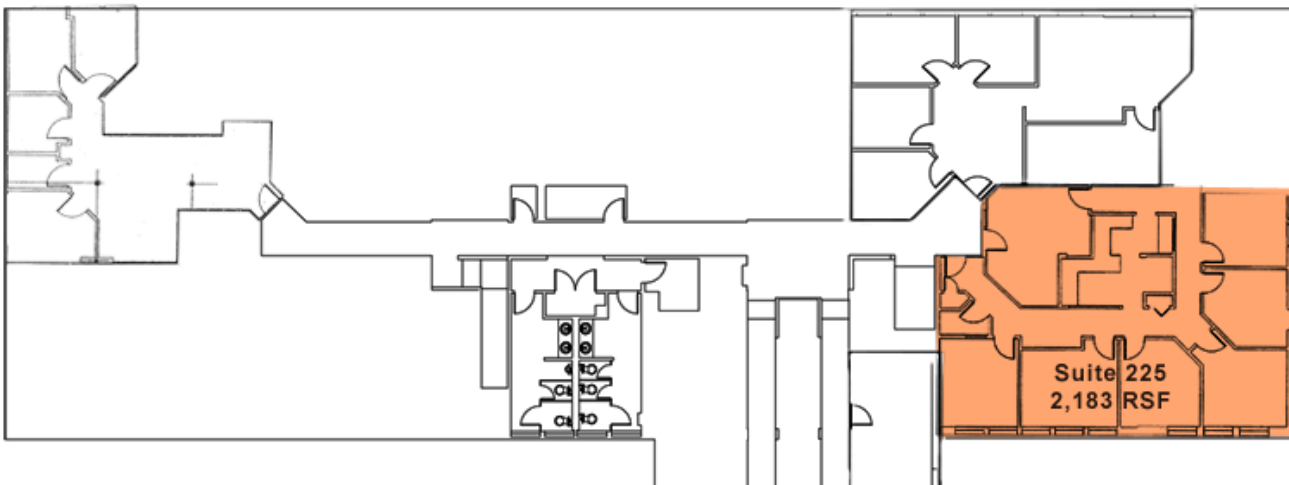
### First Floor

Suite 145: 3,888 RSF (Divisible)



### Second Floor

Suite 225: 2,183 RSF



### Contact

**Ken Hirata**  
206.296.9625  
khirata@kiddermathews.com

**Todd Battison**  
206.296.9621  
toddb@kiddermathews.com