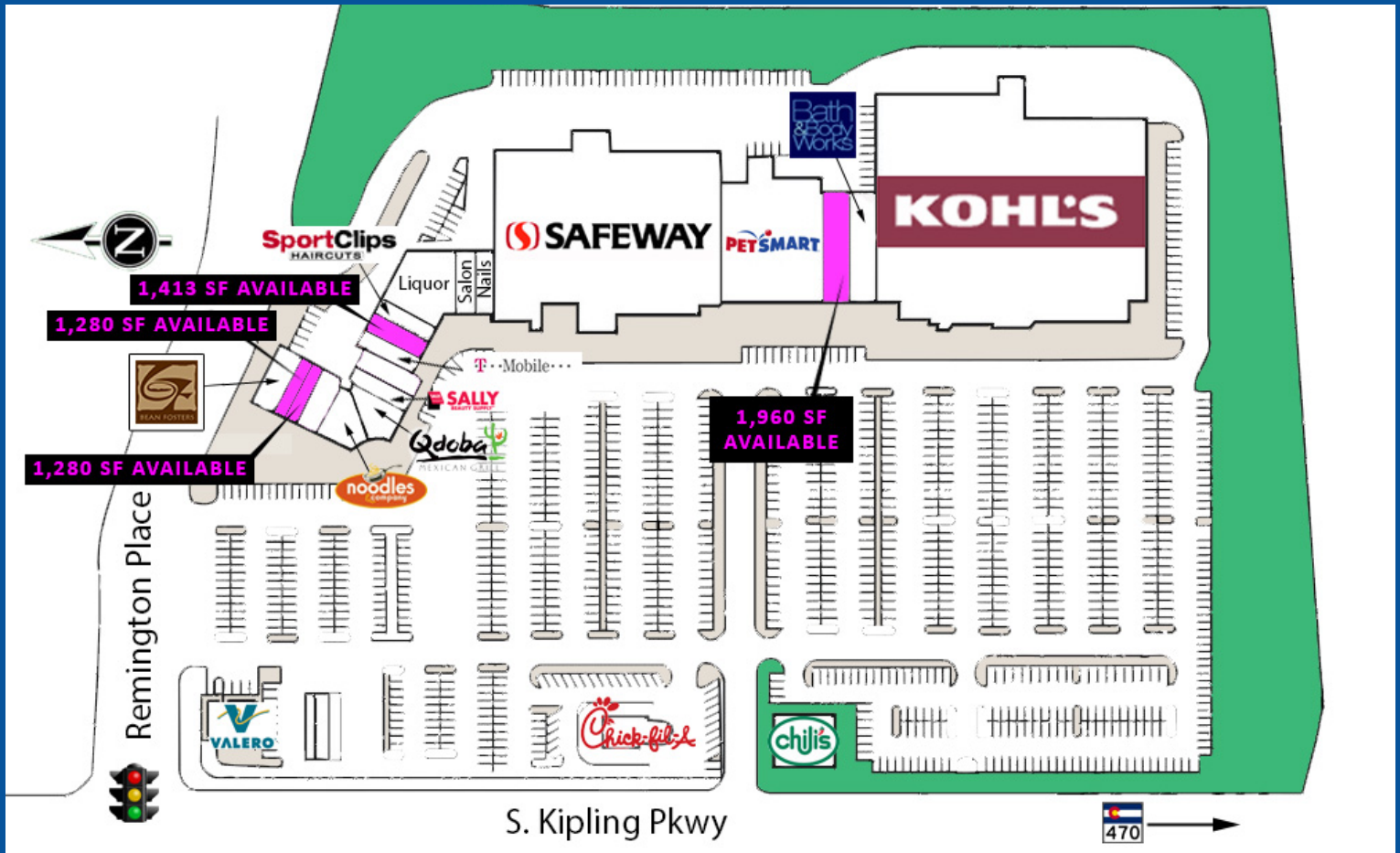


# JEFFERSON VILLAGE

NEC C-470 & Kipling Street, Littleton, CO



## PROPERTY OVERVIEW:

- ◇ Available: 1,280 SF – 2,560 SF
- ◇ Close Proximity to C-470
- ◇ Call Listing Agent for pricing and terms
- ◇ Excellent Tenant Mix

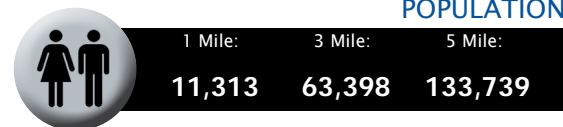
## JOIN:



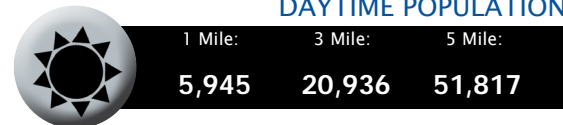
and more!

## DEMOGRAPHICS

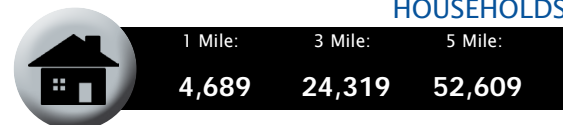
### POPULATION



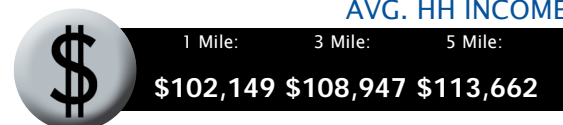
### DAYTIME POPULATION



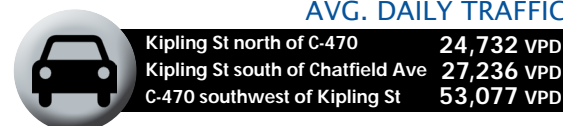
### HOUSEHOLDS



### AVG. HH INCOME



### AVG. DAILY TRAFFIC



For more information, contact:

**Rich Otterstetter**

o. 720 287 6860

c. 303 883 1003

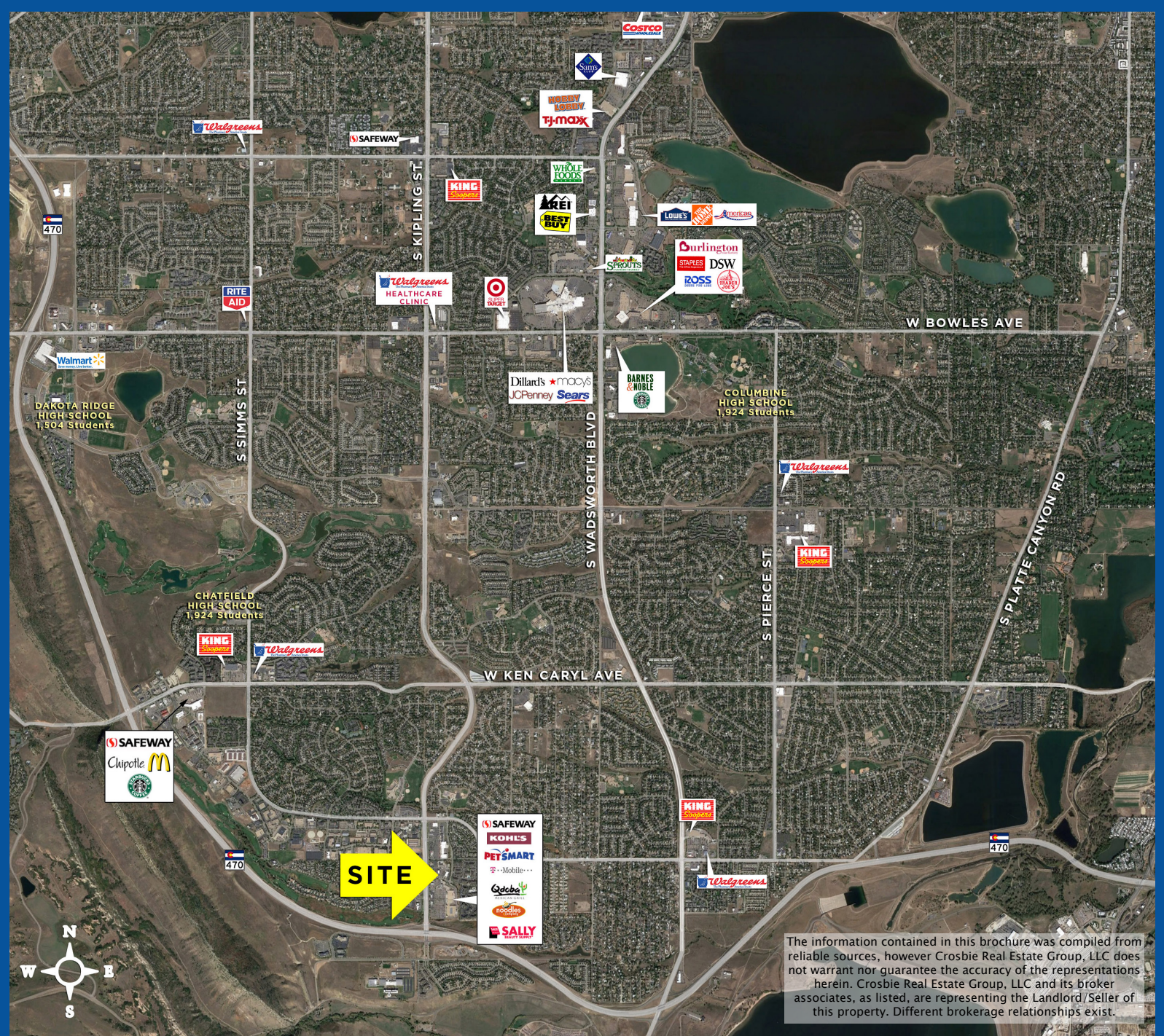
richo@creginc.com





# JEFFERSON VILLAGE

NEC C-470 & Kipling Street, Littleton, CO



The information contained in this brochure was compiled from reliable sources, however Crosbie Real Estate Group, LLC does not warrant nor guarantee the accuracy of the representations herein. Crosbie Real Estate Group, LLC and its broker associates, as listed, are representing the Landlord/Seller of this property. Different brokerage relationships exist.



**Rich Otterstetter**  
 o. 720 287 6860  
 c. 303 883 1003  
[richo@creginc.com](mailto:richo@creginc.com)

Disclosure Agreement

