



# For Lease

## Property features

- +/- 3,400 s.f. available (+/- 1,700 s.f. per floor) in the Central Business District on first floor and lower level
- Built in 1897
- 4-story building with elevator
- Newly updated, creative space perfect for modern tenants
- Interior spaces recently improved to highlight building's architecture and expose unique features
- Convenient access to countless amenities, as well as nearby Streetcar and Metro stops
- \$18 / s.f. modified gross (plus utilities and janitorial)

110 E. 8th Street  
Cincinnati, OH 45202

---

Todd Pease  
+1 513 297 2506  
[todd.pease@am.jll.com](mailto:todd.pease@am.jll.com)

---

[jll.com/cincinnati](http://jll.com/cincinnati)

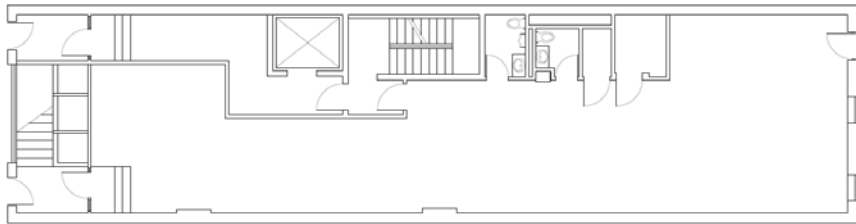


# Photos

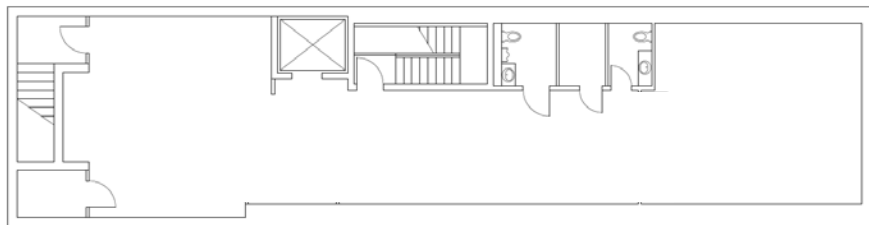


# Building Specifications

<b>Available parking</b>	Surface Lots & Garages (see map on next page)
<b>Ceiling Heights</b>	Varies from 8' to 20'
<b>Lighting</b>	Fluorescent and Can
<b>Windows</b>	Single Pane / Vintage
<b>Gas and Electric</b>	Duke Energy - each floor on its own meter
<b>Water / Sewer</b>	City of Cincinnati
<b>Phone / Data</b>	Cincinnati Bell

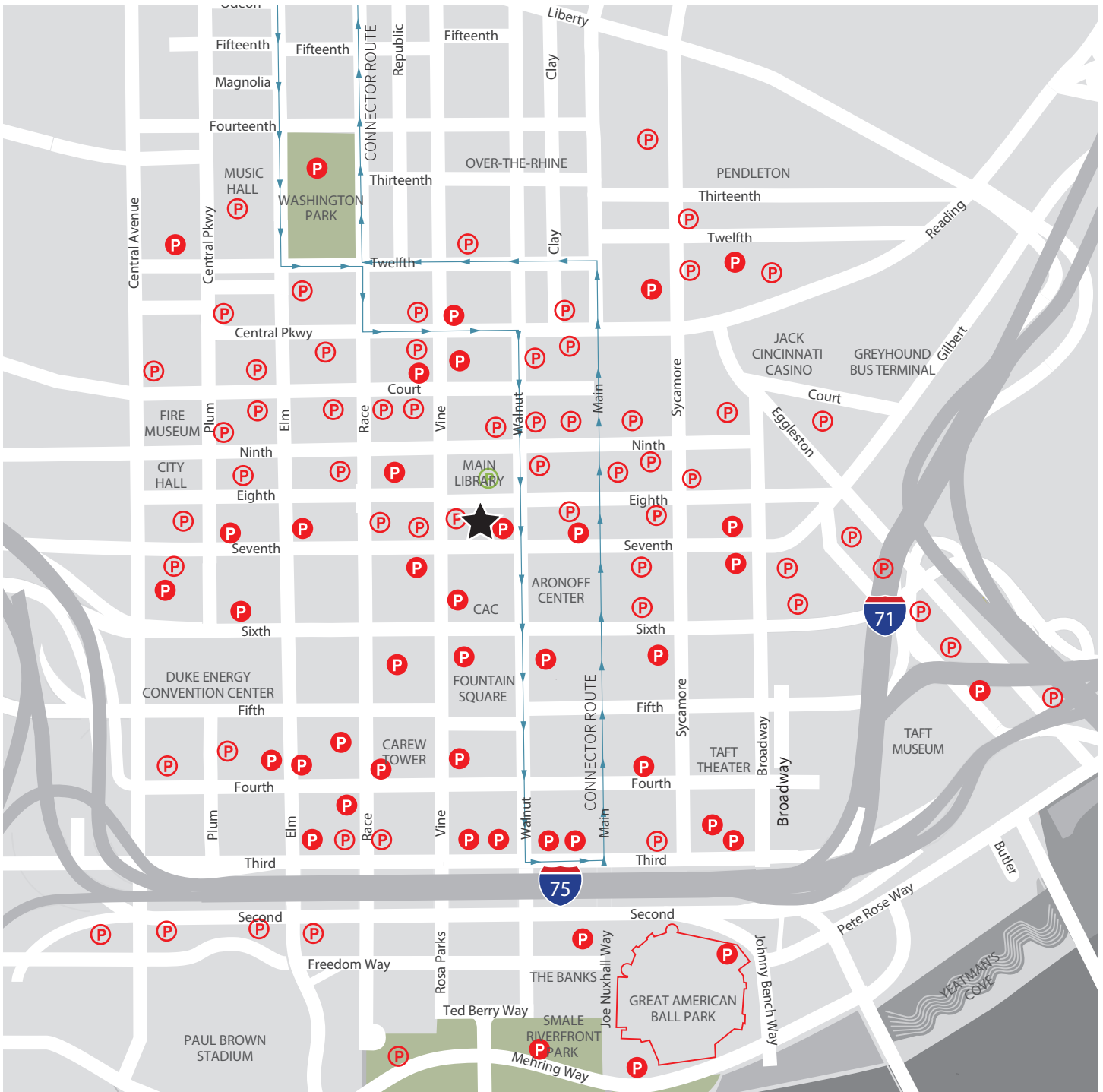


**First Floor**  
1,700 s.f.



**Lower Level**  
1,700 s.f.

# Parking map



★ 110 E. 8th Street

## DISCLAIMER

©2020 Jones Lang LaSalle IP, Inc. All rights reserved. All information contained herein is from sources deemed reliable; however, no representation or warranty is made to the accuracy thereof.

