



# For Lease

## Boutique Pioneer Square building

- Four story brick building
- Open space floor and traditional office floor buildouts
- Ideal location at the intersection of Pioneer Square and the Seattle CBD
- Unique building features include exposed brick and an oversized skylight
- Situated adjacent to Pioneer Square Park

## Howard Building

614 First Avenue  
Seattle, WA 98104

---

### Connor Raffety

+1 206 971 7024

[connor.raffety@am.jll.com](mailto:connor.raffety@am.jll.com)

### Tim Jones

+1 206 971 7011

[tim.jones@am.jll.com](mailto:tim.jones@am.jll.com)

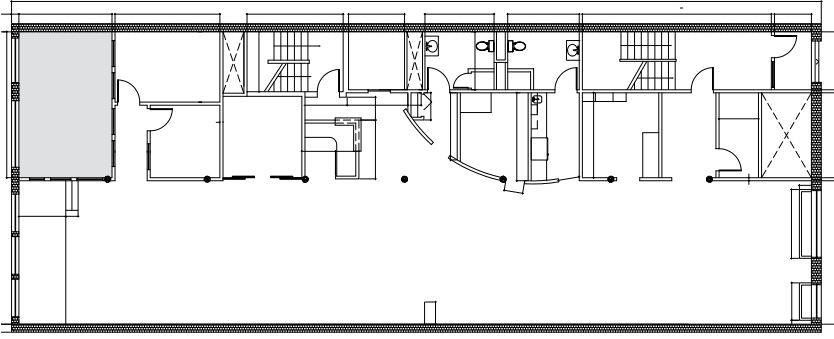
---

[www.jll.com](http://www.jll.com)

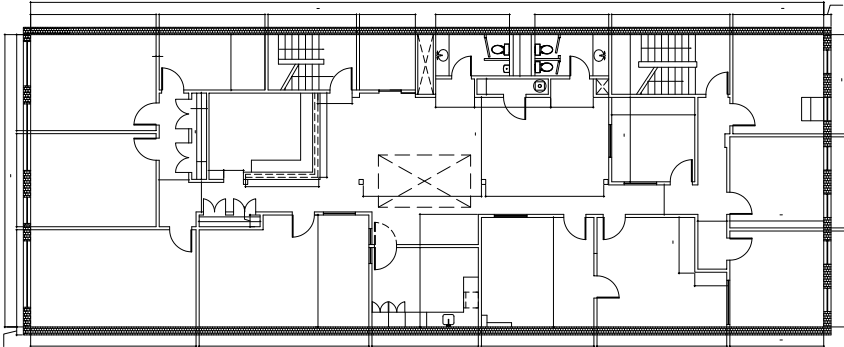




## 2nd Floor 3,380 SF



## 3rd Floor 3,618 SF



## Vibrant Neighborhood



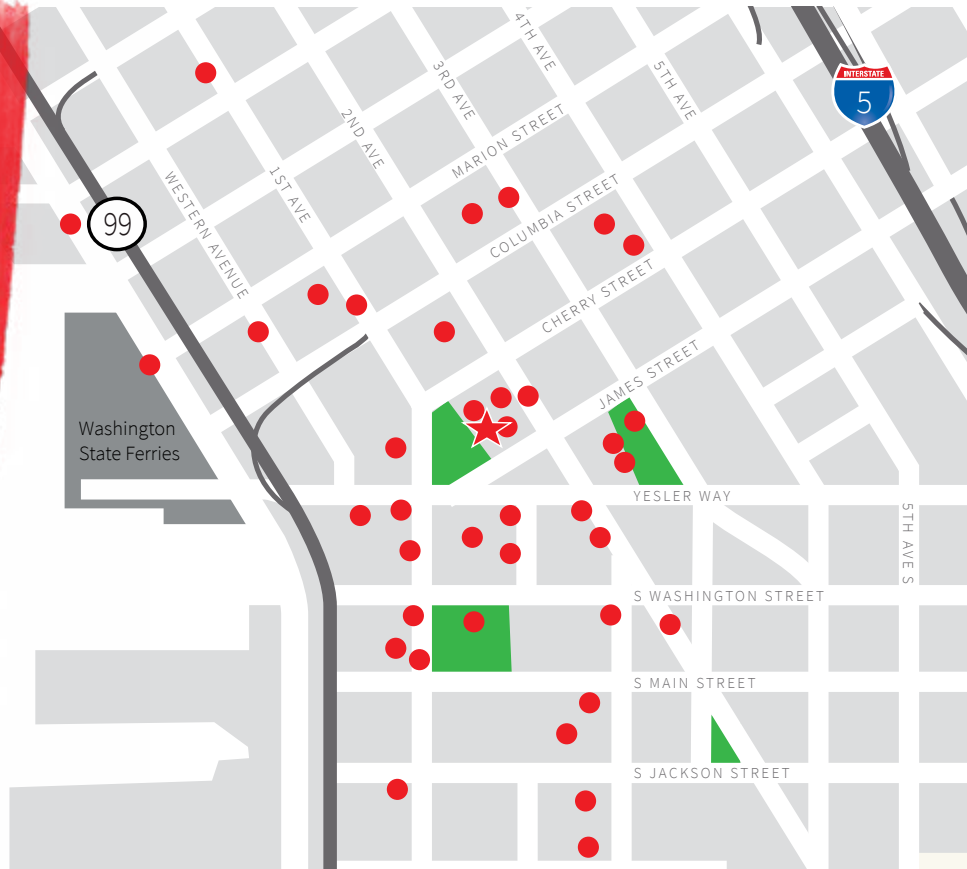
**17**  
restaurants  
within **1** block



**100**  
Transit Score  
Rider's Paradise



**99**  
Walk Score  
Walker's Paradise



DISCLAIMER  
© 2020 Jones Lang LaSalle IP, Inc. All rights reserved. All information contained herein is from sources deemed reliable; however, no representation or warranty is made to the accuracy thereof.

