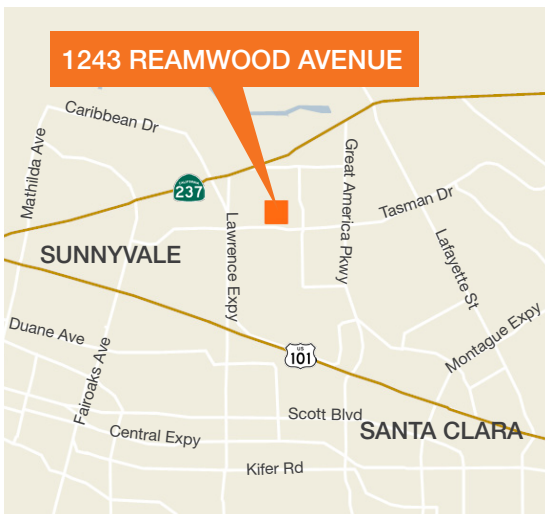




# Available For Lease



**±5,860 SF R&D Unit**

40% office, 60% manufacturing/warehouse

End unit / 100% HVAC

Grade-level door

Three restrooms

Distributed air lines

**Lease rate: \$2.15 PSF, NNN**

[kiddermathews.com](http://kiddermathews.com)

## Contact

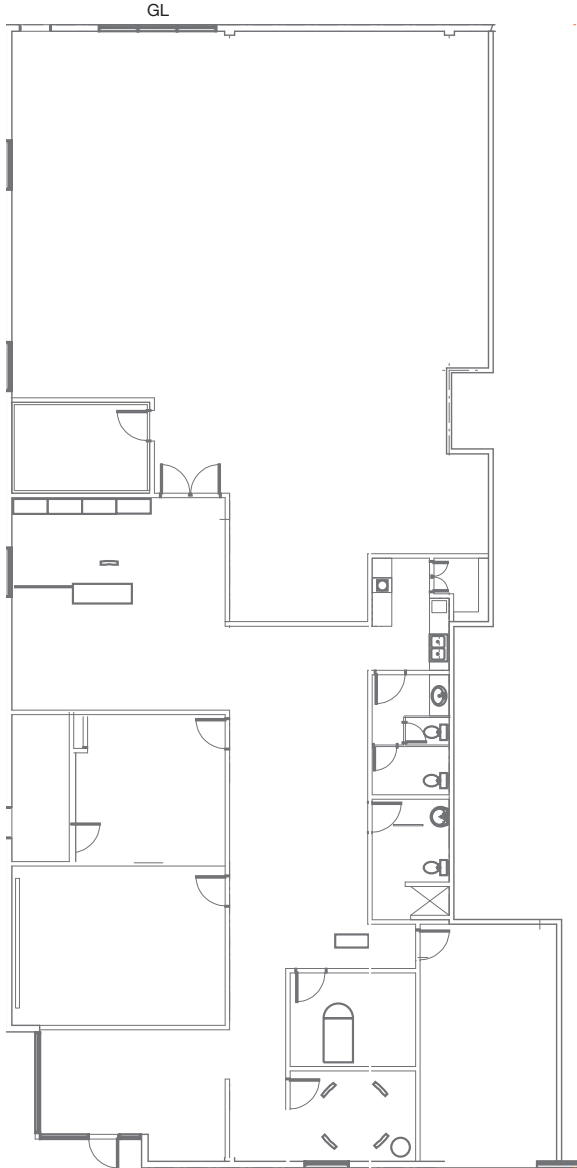
**Bill Kurfess**  
650.769.3527  
bkurfess@kiddermathews.com  
LIC #01049307

**Michael Jensen**  
650.769.3515  
mjensen@kiddermathews.com  
LIC #01966026

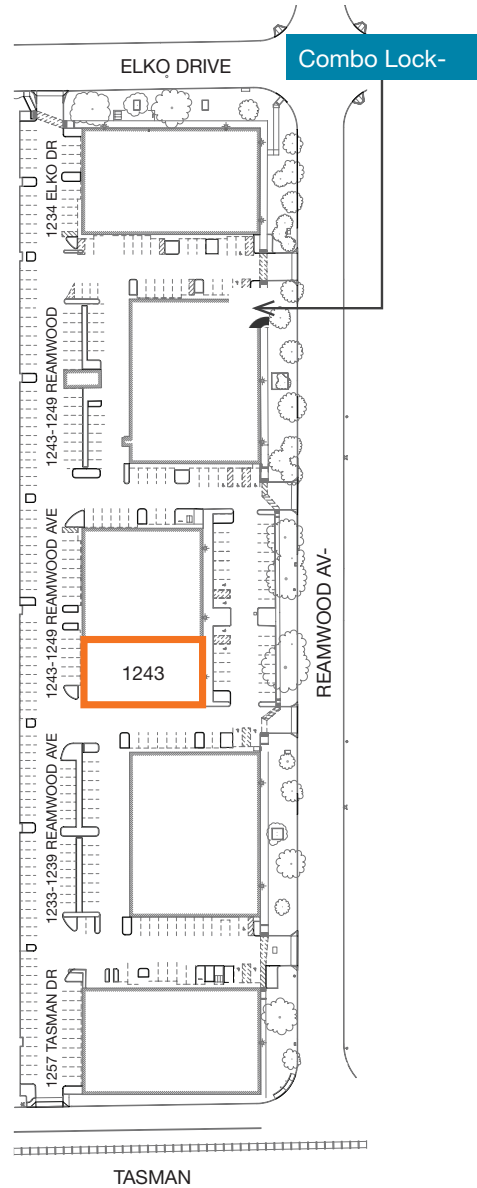
**Joseph Scuncio**  
408.588.2337  
jscuncio@kiddermathews.com  
LIC #00861874

# 1243 Reamwood Avenue

±5,860 SF R&D Unit For Lease



\*Floor plan not to scale



## Contact

**Bill Kurfess**  
650.769.3527  
bkurfess@kiddermathews.com  
LIC #01049307

**Michael Jensen**  
650.769.3515  
mjensen@kiddermathews.com  
LIC #01966026

**Joseph Scuncio**  
408.588.2337  
jscuncio@kiddermathews.com  
LIC #00861874

[kiddermathews.com](http://kiddermathews.com)