

FOR LEASE

# RG PROFESSIONAL CENTER

18323 Bothell-Everett Hwy / Bothell, WA 98012



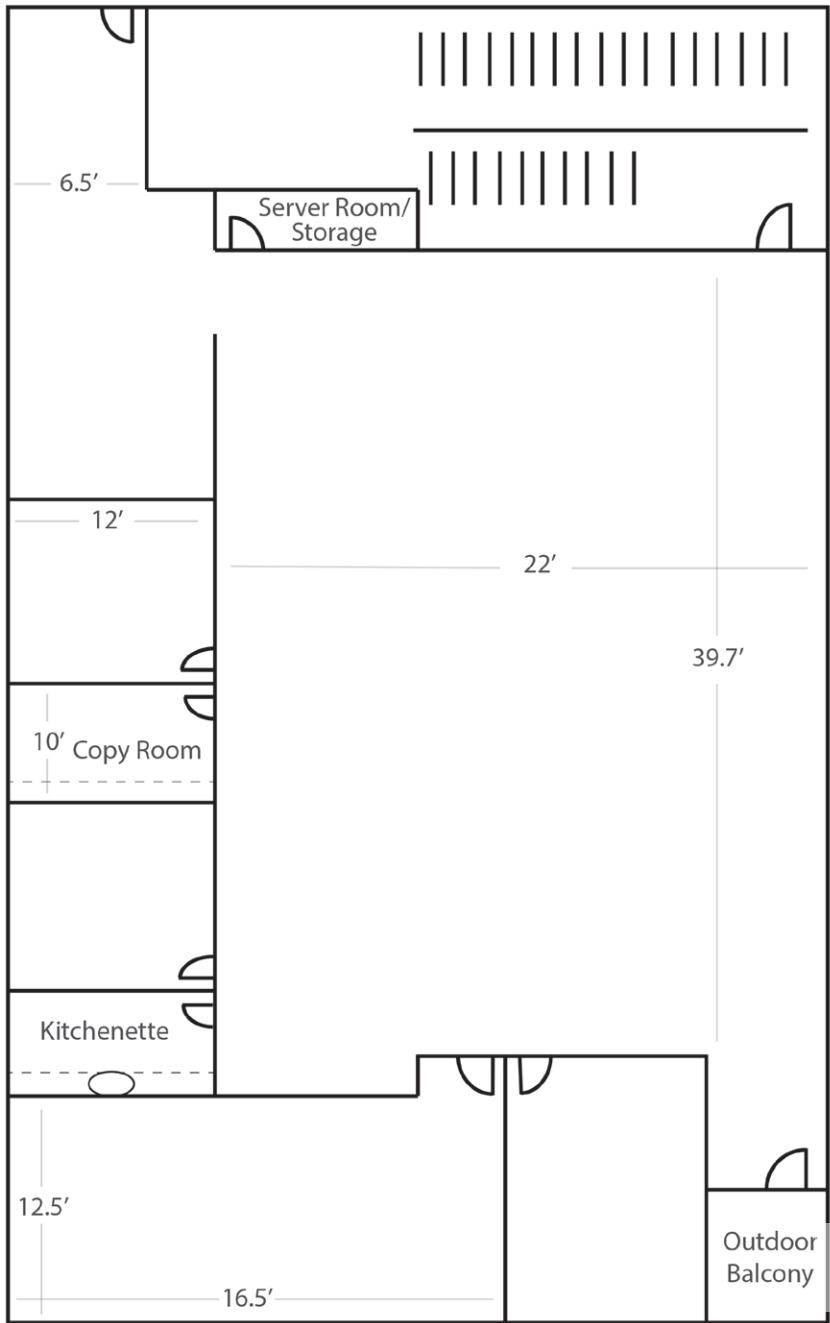
## PROPERTY FEATURES

- + \$18.00/RSF/Year, NNN
- + On site ownership and management for expediting decisions
- + Excellent location on Bothell-Everett Hwy
- + Shared conference room and tenant lounge
- + Abundant free parking: 5.0/1,000 RSF
- + Walking distance to retail amenities
- + OPEX: \$8.75/RSF/Year



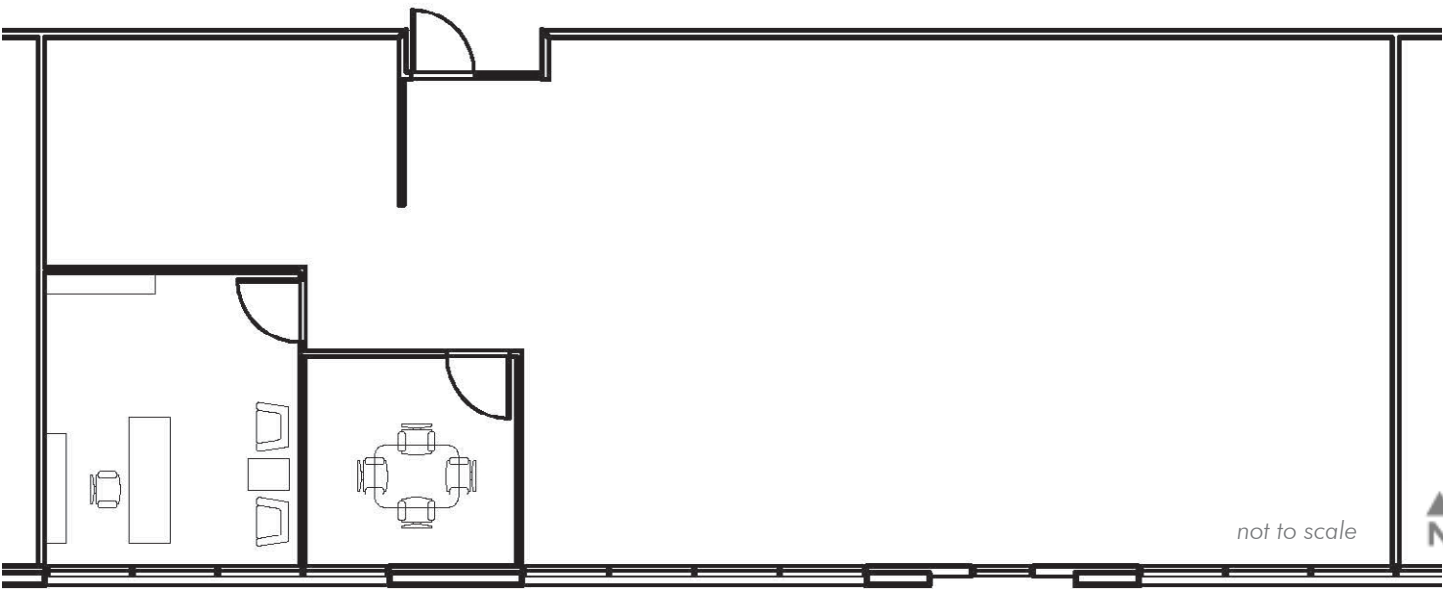
SUITE 330

±2,332 RSF

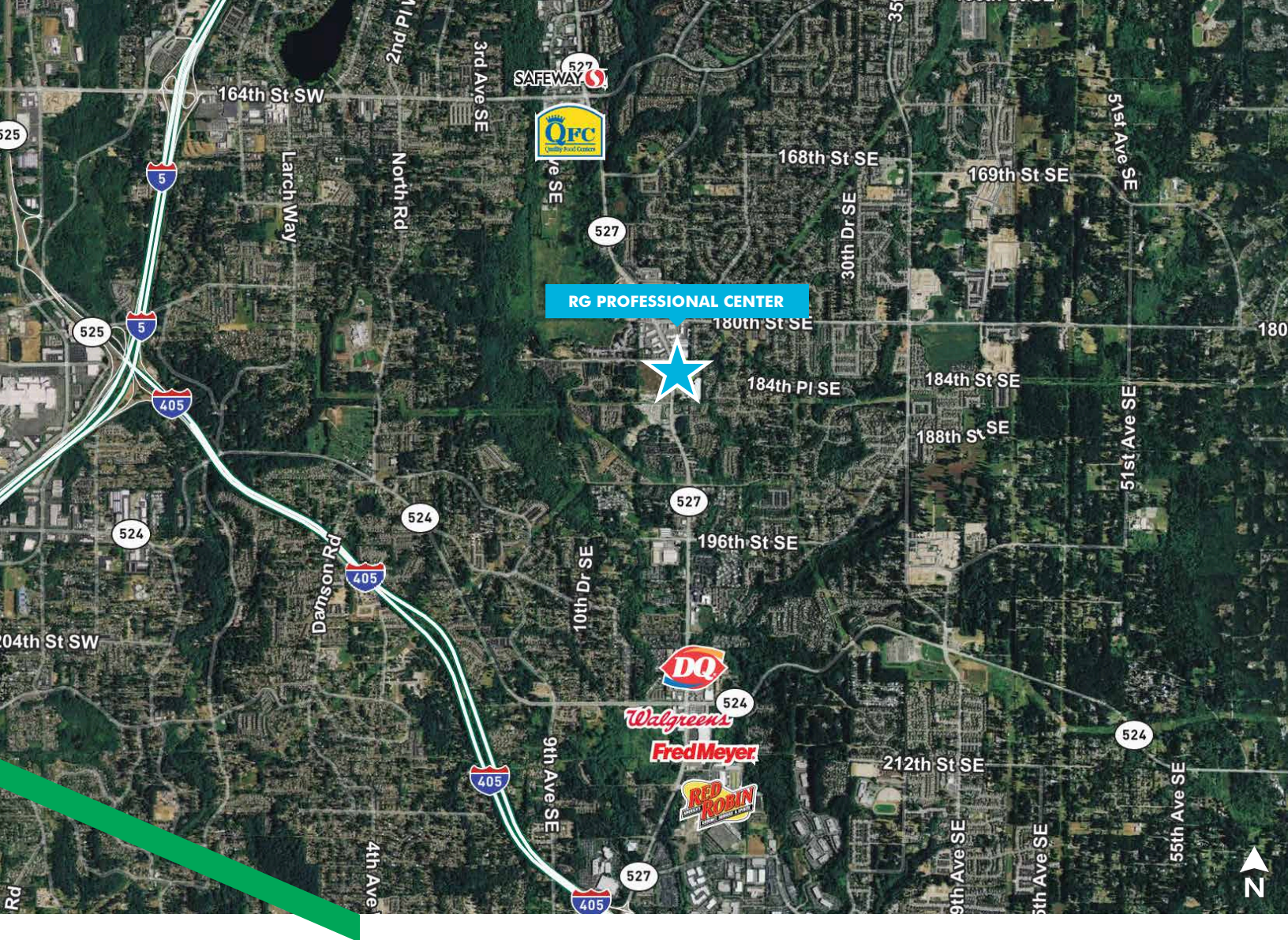


SUITE 360

±1,833 RSF







#### PLEASE CONTACT:

##### ERIK LARSON

Vice President  
+1 425 462 6954  
erik.larson@cbre.com

##### RIC BRANDT

Senior Vice President  
+1 425 462 6901  
ric.brandt@cbre.com

##### JOHN BAUER

Senior Vice President  
+1 425 462 6906  
john.bauer@cbre.com

##### CBRE, INC.

929 108th Avenue NE  
Suite 700  
Bellevue, WA 98004

© 2021 CBRE, Inc. All rights reserved. This information has been obtained from sources believed reliable, but has not been verified for accuracy or completeness. You should conduct a careful, independent investigation of the property and verify all information. Any reliance on this information is solely at your own risk. CBRE and the CBRE logo are service marks of CBRE, Inc. All other marks displayed on this document are the property of their respective owners, and the use of such logos does not imply any affiliation with or endorsement of CBRE. Photos herein are the property of their respective owners. Use of these images without the express written consent of the owner is prohibited. AM 1-1-21