

RETAIL FOR LEASE
Iron Bridge Plaza

11964-11992 Iron Bridge Road | Chesterfield County, Virginia



Property Features

- 2,700 SF AVAILABLE
- Continuous traffic with Walmart anchor
- Easy access with traffic light
- Strong demographics
- 26,000 VPD – Iron Bridge Road (Route 10)



Join Tenants & Nearby Retailers

Demographics	1 Mile	3 Miles	5 Miles
Estimated Population	4,895	31,741	72,501
Avg. Household Income	\$98,854	\$88,332	\$83,588
Daytime Population	4,584	34,397	66,925

For more information, contact:

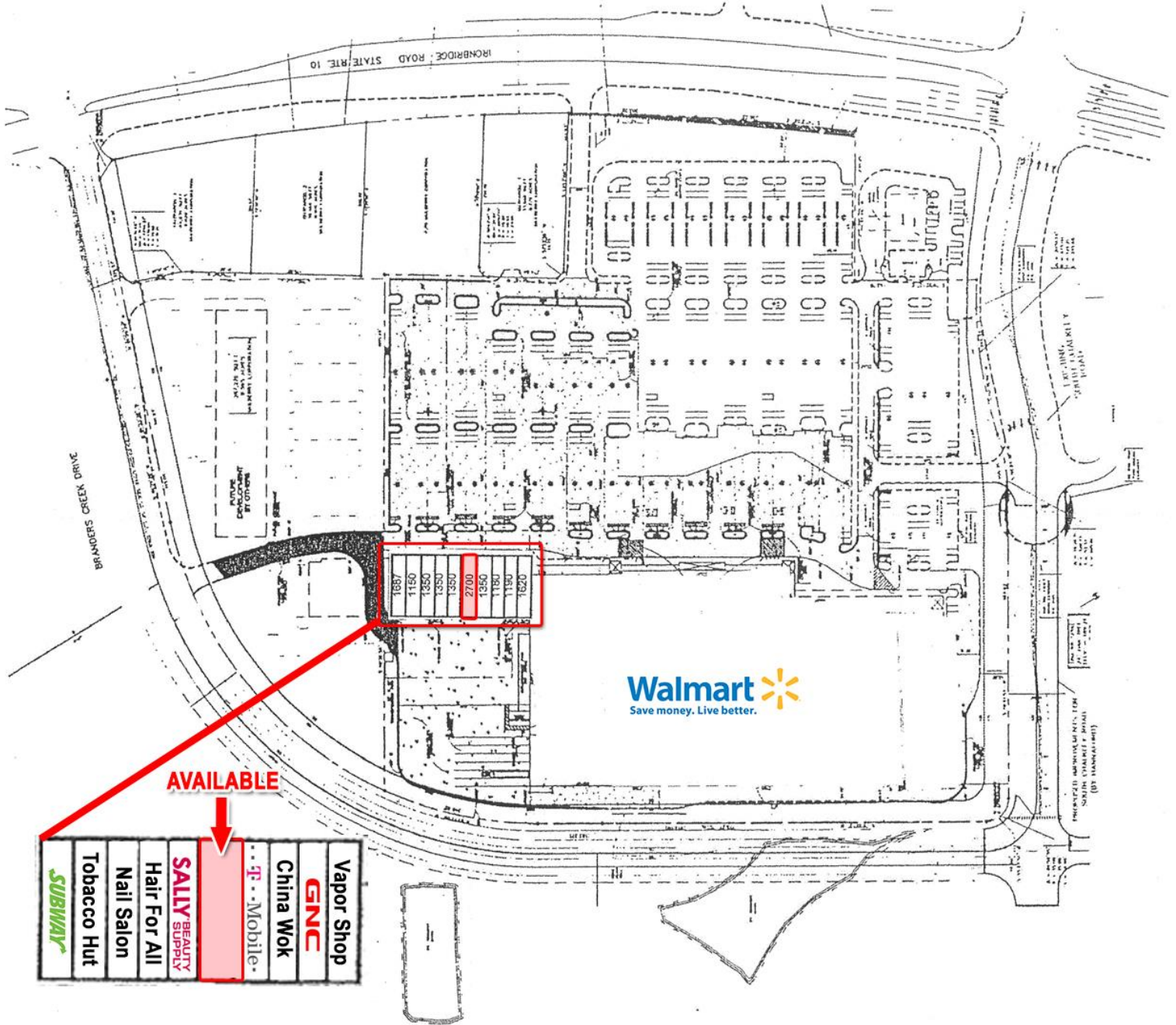
RICHARD L. THALHIMER
 Senior Vice President
 804 697 3416
 richard.thalhimer@thalhimer.com

JIM ASHBY
 Senior Vice President
 804 697 3455
 jim.ashbyr@thalhimer.com

Thalhimer Center
 11100 W. Broad Street
 Glen Allen, VA 23060
 www.thalhimer.com

RETAIL FOR LEASE
Iron Bridge Plaza

11964-11992 Iron Bridge Road | Chesterfield County, Virginia



For more information, contact:

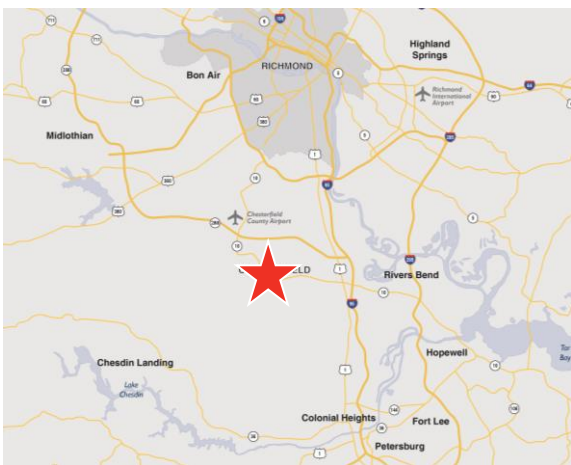
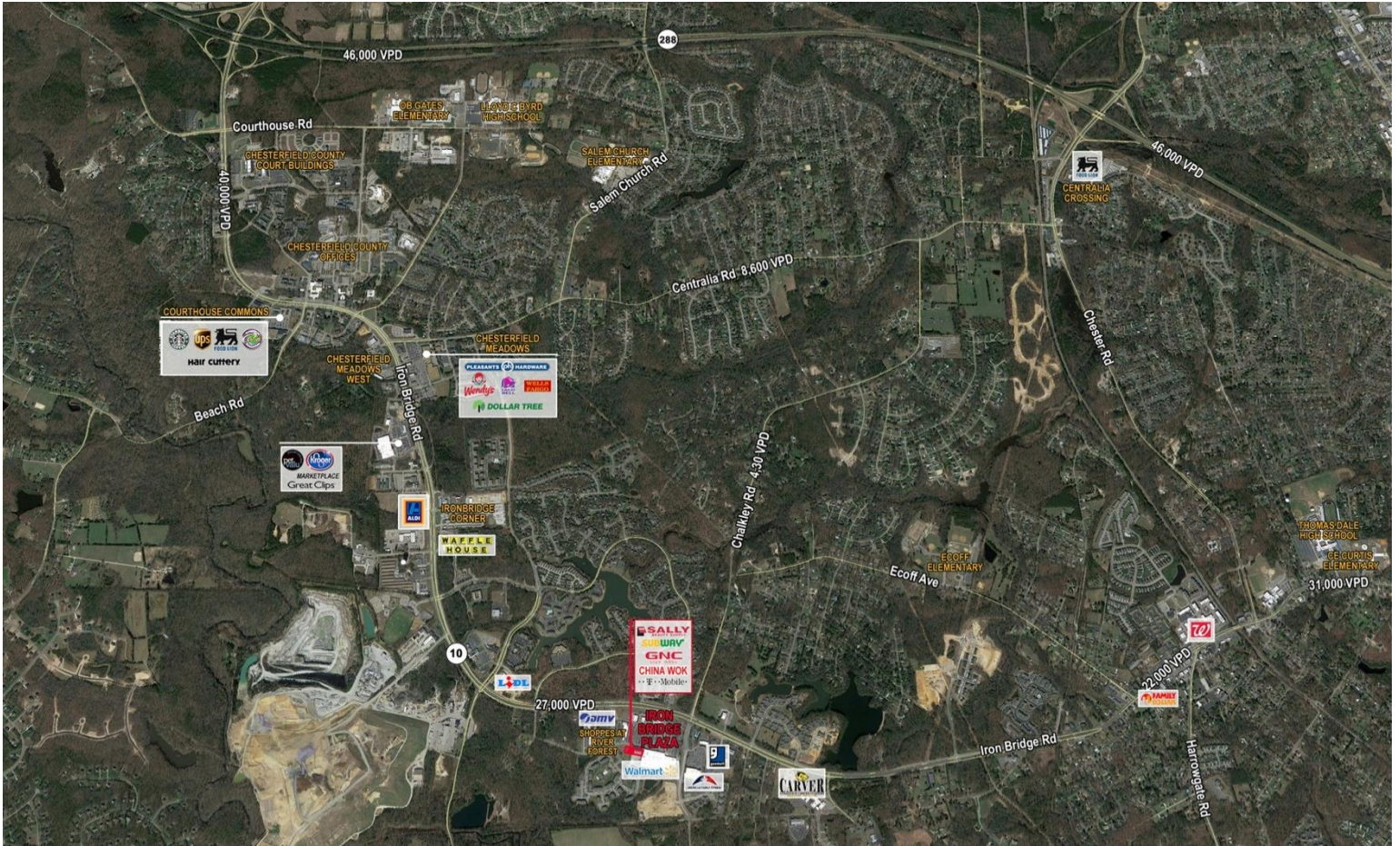
RICHARD L. THALHIMER
 Senior Vice President
 804 697 3416
 richard.thalhimer@thalhimer.com

JIM ASHBY
 Senior Vice President
 804 697 3455
 jim.ashbyr@thalhimer.com

Thalhimer Center
 11100 W. Broad Street
 Glen Allen, VA 23060
 www.thalhimer.com

RETAIL FOR LEASE
Iron Bridge Plaza

11964-11992 Iron Bridge Road | Chesterfield County, Virginia



For more information, contact:

RICHARD L. THALHIMER
 Senior Vice President
 804 697 3416
 richard.thalhimer@thalhimer.com

JIM ASHBY
 Senior Vice President
 804 697 3455
 jim.ashbyr@thalhimer.com

Thalhimer Center
 11100 W. Broad Street
 Glen Allen, VA 23060
 www.thalhimer.com

Independently Owned and Operated / A Member of the Cushman & Wakefield Alliance
 Cushman & Wakefield | Thalhimer © 2015. No warranty or representation, express or implied, is made to the accuracy or completeness of the information contained herein, and same is submitted subject to errors, omissions, change of price, rental or other conditions, withdrawal without notice, and to any special listing conditions imposed by the property owner(s). As applicable, we make no representation as to the condition of the property (or properties) in question.