

For Sublease

**2033 N. Main Street, Suite 365
Walnut Creek, CA**

3,687 RSF (Divisible) Available



Property Highlights:

- 3,687 RSF (divisible) available now
- Sublease expiration: January 31, 2022
- Located adjacent to Walnut Creek BART
- On-site Amenities include Common Conference Room and 24 Hour Fitness
- Walking distance to numerous business amenities including restaurants, shopping and entertainment
- Immediate access to I-680 & Highway 24

For More Information:

Robert Vance

+1 925 944 2152

robert.vance@am.jll.com

License #: 00971934

Kristi Childers

+1 510 465 9408

kristi.childers@am.jll.com

License #: 01997043

Jones Lang LaSalle Brokerage, Inc.

License #: 01856260

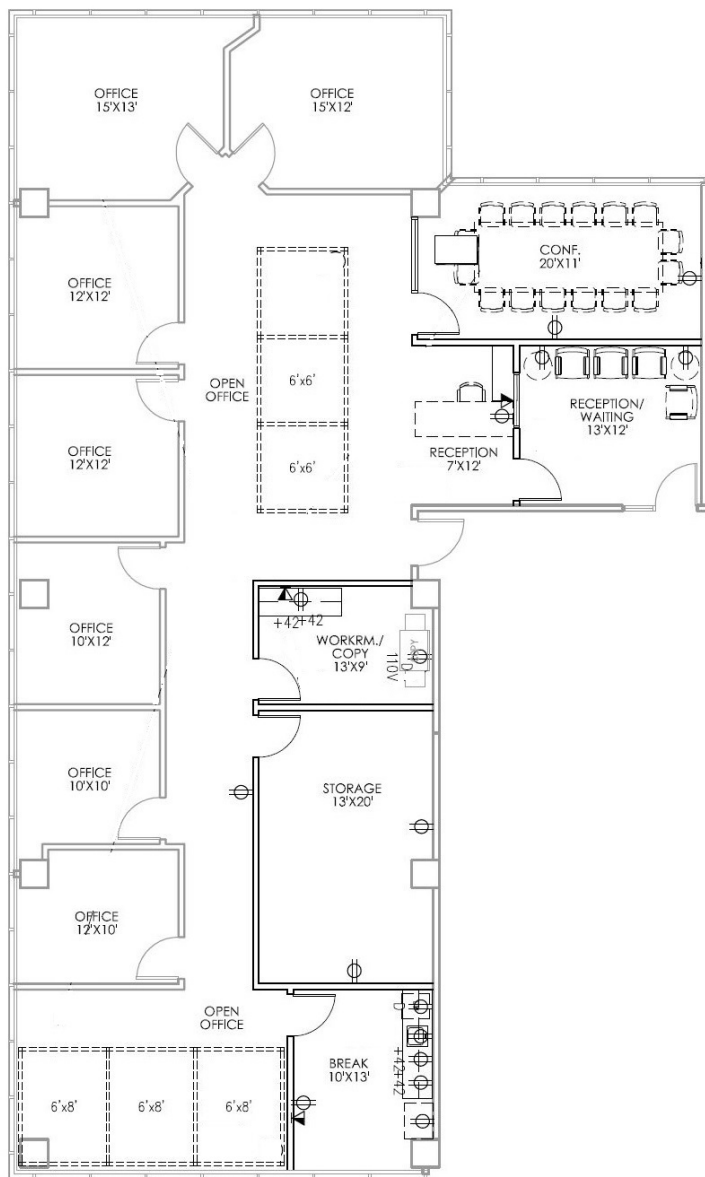
DISCLAIMER

Copyright © 2018 Jones Lang LaSalle IP, Inc. All rights reserved. All information contained herein is from sources deemed reliable; however, no representation or warranty is made to the accuracy thereof.



For Sublease

**2033 N. Main Street, Suite 365
Walnut Creek, CA**



Floor plan not to scale

3,687 RSF (Divisible) Available



Property Features:

- Great corner location with three (3) sides of glass
- Seven (7) private offices
- Executive conference room
- Large file/storage room
- Bright kitchen
- Plug & Play, Law Firm space

For More Information:

Robert Vance
+1 925 944 2152
robert.vance@am.jll.com
License #: 00971934

Kristi Childers
+1 510 465 9408
kristi.childers@am.jll.com
License #: 01997043

Jones Lang LaSalle Brokerage, Inc.
License #: 01856260