



BUSHWICK LAND FOR LEASE @ L TRAIN

30,000 SQ. FT. AVAILABLE IMMEDIATELY

FEATURES:

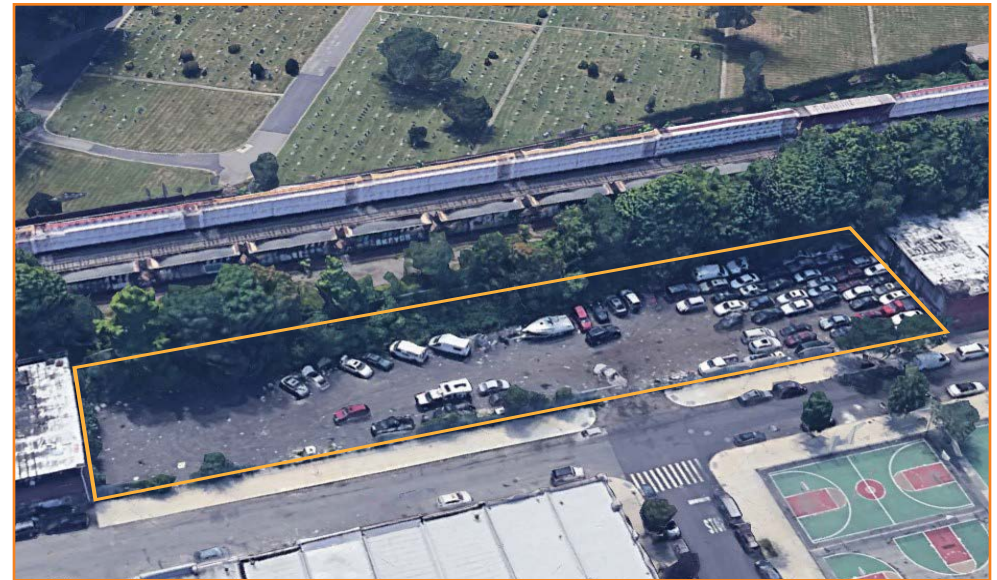
- 30,000 Sq. Ft. Available Immediately
- Fenced
- Double-Wide Gate for Street Access
- Electricity Available
- Centrally Located on Queens / Brooklyn Border

NEARBY:

- Jackie Robinson Parkway
- Brooklyn-Queens Expressway
- Long Island Expressway
- Myrtle Avenue

Transportation:

-  **Wilson Ave**
-   **Chauncey St**
-  **Knickerbocker Ave / Cooper St**



LEASE PRICE:

UPON REQUEST

282 MOFFAT STREET, BROOKLYN

BLOCK: 3448

LOT: 30

ZONING: M1-1

For Information About This Property
Contact Exclusive Agents:

Paul Bralower, Associate Broker
pbralower@pinnaclereny.com
718-371-6402

Brendan Burke, Associate Broker
bburke@pinnaclereny.com
718-371-6403



PINNACLE REALTY

OF NEW YORK, LLC

www.pinnacle-ny.com

46-34 11th Street • Long Island City, NY 11101

718-784-8282

