

103 NORFOLK
SIGNAGE OPPORTUNITY

COMMERCIAL CONDO FOR SALE

103 NORFOLK

BETWEEN DELANCEY & RIVINGTON STREETS

 **SINVIN**
COMMERCIAL REAL ESTATE & ADVISORY



In the midst of the Essex Crossing Development: International Center of Photography, Target, Trader Joe's, Regal Cinemas, and The Market Line.

FEATURES

- Retail condo
- Pristine white boxed space in a new construction with a unique private front patio
- Restaurant/bars welcome (venting in place)
- Outdoor seating is possible
- Potential for additional signage on adjacent exterior south wall
- HVAC system in place

NEIGHBORS

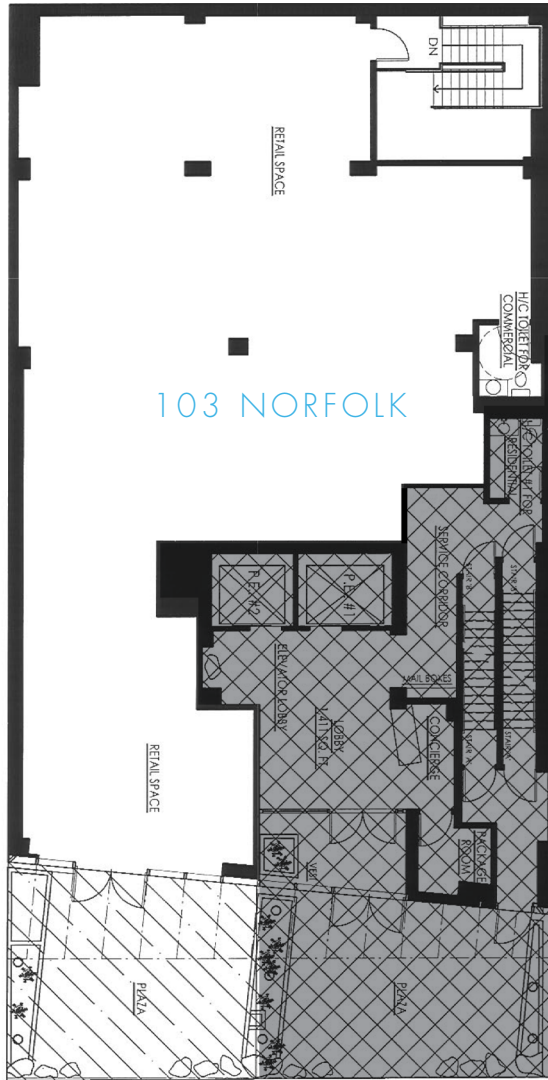
- Chesterfield Gallery
- Brennan & Griffin Gallery
- Maryam Nassir Zadeh
- The Market Line
- Galerie Perrotin
- Nurse Bettie
- Back Room
- Tiny's Giant Sandwich
- Essex Market

DETAILS

Ground.....2,690 SF
Basement.....281 SF
Front Patio.....429 SF
Frontage.....25'

Asking Price..\$2,200,000
19/20 Taxes.....\$42,411
Condo Fees...\$41,484/Yr
Delivered.....Vacant

Built.....2005
Block.....353
Lot.....1001
Complex.....1647



NORFOLK STREET

PLEASE CONTACT

Christopher Owles 212.604.9002 chris@sinvin.com
Margie Sarway 646.673.8742 margie@sinvin.com





103 NORFOLK

BETWEEN DELANCEY & RIVINGTON STREETS