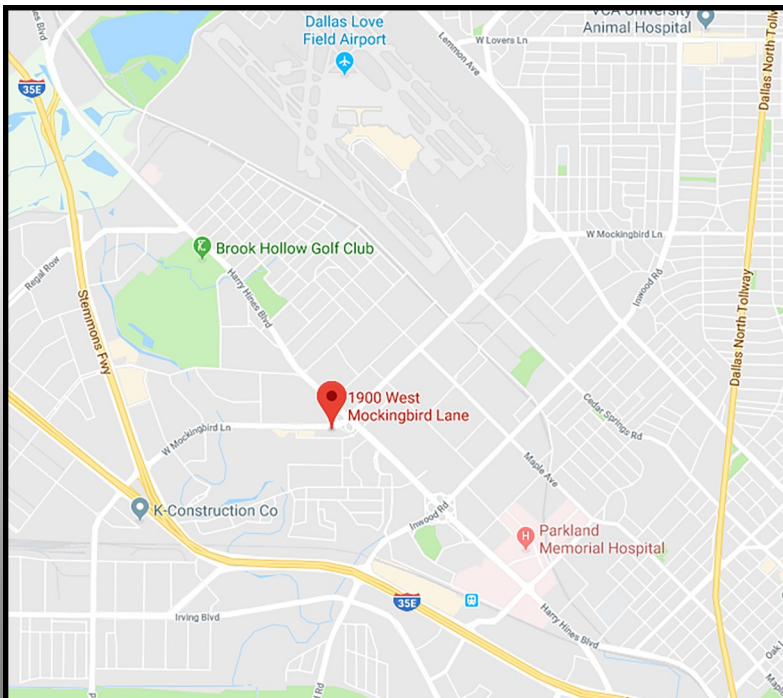
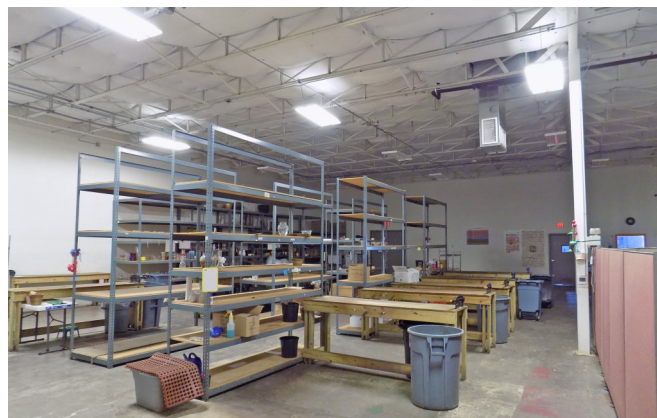


FOR LEASE: 13,500 SQUARE FEET

1900 W. MOCKINGBIRD LANE, DALLAS, TX 75235

INDUSTRIAL REAL ESTATE BROKERAGE

WWW.MERCER-COMPANY.COM



DETAILS

AVAILABLE FOR LEASE

- ◆ TOTAL SF: 13,500
- ◆ OFFICE SF: 1,800
- ◆ CLEAR HEIGHT: 15' - 18'
- ◆ GRADE LEVEL DOOR: 2
- ◆ HEAVY POWER
- ◆ SECURED OUTSIDE STORAGE WITH MOTORIZED GATES/ SECURED PARKING: ± 25 CARS
- ◆ 50% HVAC
- ◆ 60KW GENERAC BACKUP GENERATOR (NATURAL GAS) W/ AUTO FAILOVER

JEFF MERCER
CELL 214.680.7010
JMERCER@MERCER-COMPANY.COM

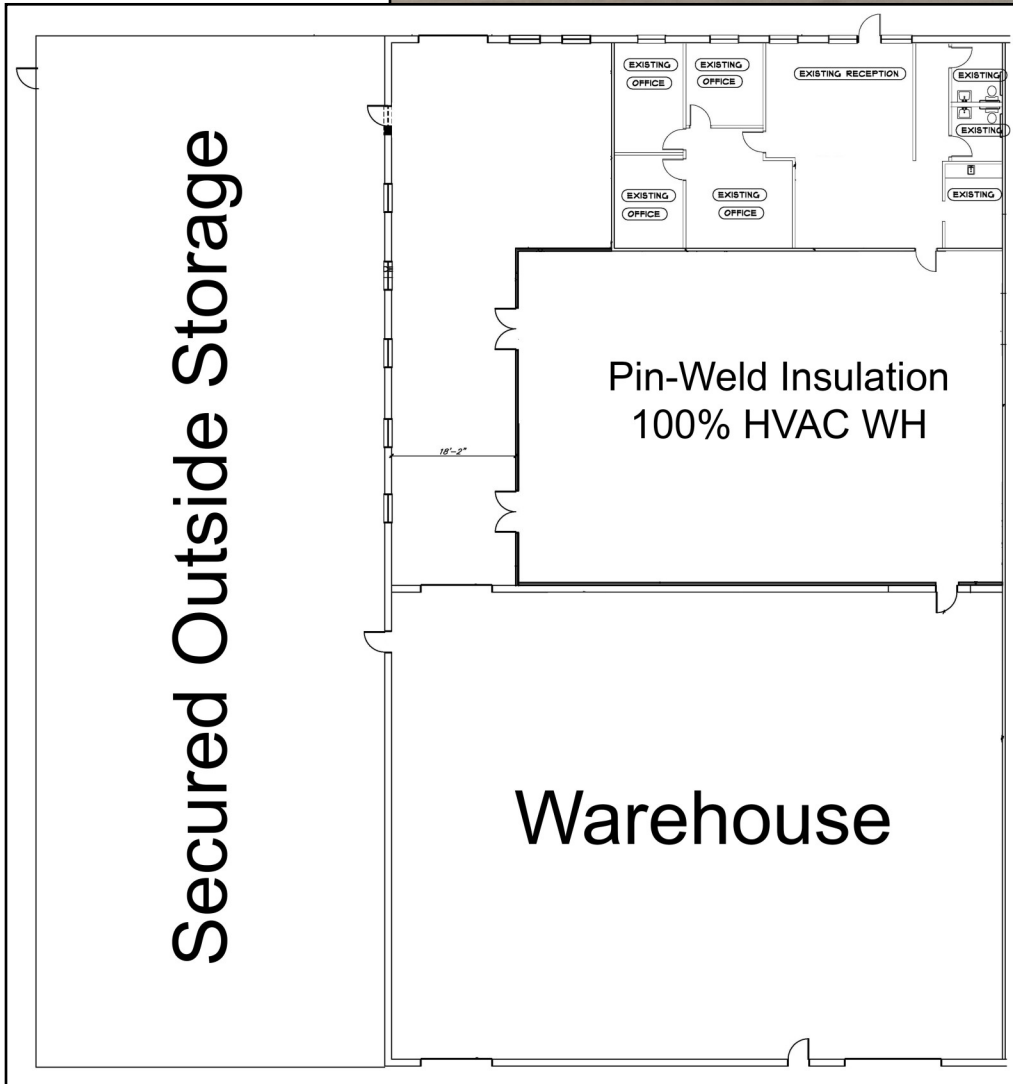
DAVID GUINN
CELL 940.550.8618
DGUINN@MERCER-COMPANY.COM

FOR LEASE: 13,500 SQUARE FEET

1900 W. MOCKINGBIRD LANE, DALLAS, TX 75235

INDUSTRIAL REAL ESTATE BROKERAGE

WWW.MERCER-COMPANY.COM



The information contained herein has been given to us by the owner of the property or other sources we deem reliable. We have no reason to doubt its accuracy, but we do not guarantee it. All information should be verified before purchase or lease.