

FOR LEASE - EAST VALLEY OFFICE SUITES

University Business Centre

2330 W. University Dr. | Tempe, Arizona 85281



SUITE 15: ±8,010 SF: \$0.75 IND GRS
SUITE 21: (SPEC) ±3,293 SF: \$0.75 IND GRS

FEATURES

- Air Conditioned Suites
- Office / Industrial Uses
- Up to 400 Amps per Suite
- Grade Level Loading
- 1/4 Mile to SR-143
- Just Minutes from Sky Harbor International Airport

For More Information, Please Contact:

Tyson Breinholt

D: 480.966.7513

M: 602.315.7131

tbreinholt@cpi.az.com

Shane McCormick

D: 480.968.9618

M: 480.720.6250

smccormick@cpi.az.com

Leroy Breinholt

D: 480.966.6593

M: 602.377.4687

lbreinholt@cpi.az.com

Marketed by:



COMMERCIAL PROPERTIES INC.

Locally Owned. Globally Connected. CFRAC International

TEMPE: 2323 W. University Drive, Tempe, AZ 85281 | 480.966.2301
SCOTTSDALE: 8777 N. Gainey Center Dr., Suite 245, Scottsdale, AZ 85258 | www.cpi.az.com

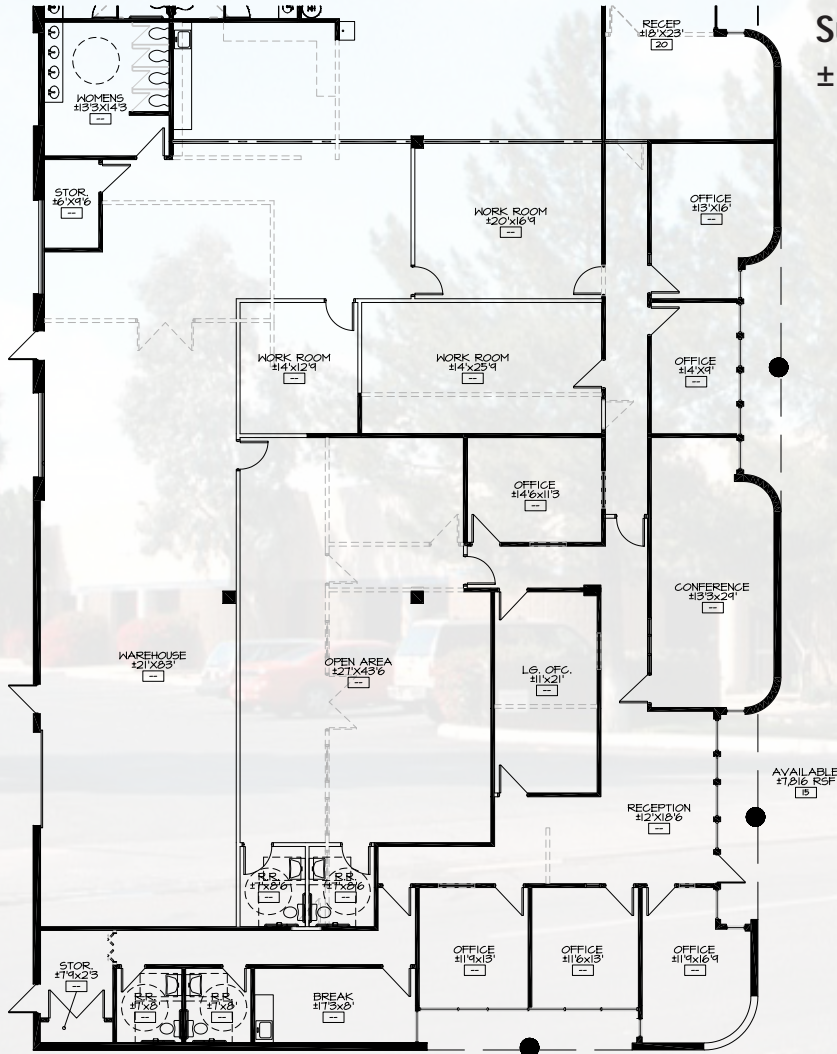
Ownership Entity is Controlled by:



FOR LEASE - EAST VALLEY OFFICE SUITES

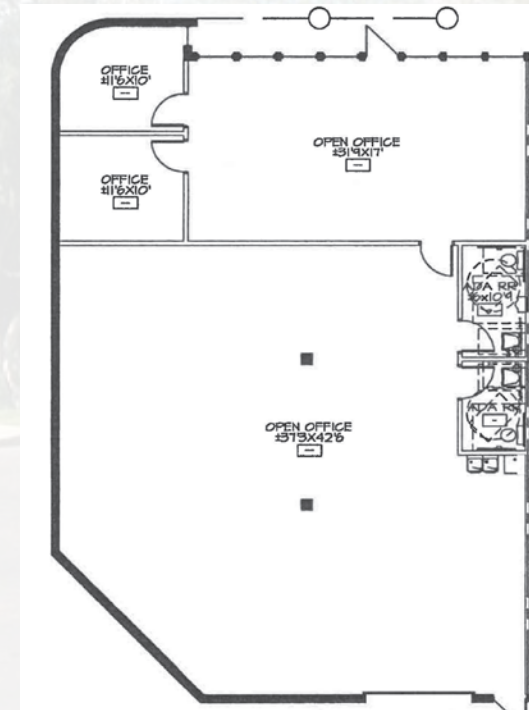
University Business Centre


2330 W. University Dr. | Tempe, Arizona 85281



Suite 15
±8,010 @ \$0.75 SF/ GRS

SPEC
Suite 21
±3,293 @ \$0.75 SF/ GRS



Ownership Entity is Controlled by: **TRAVELERS** 

Marketed by:  **COMMERCIAL PROPERTIES INC.**
Locally Owned. Globally Connected. 

The information contained herein has been obtained from various sources. We have no reason to doubt its accuracy; however, J & J Commercial Properties, Inc. has not verified such information and makes no guarantee, warranty or representation about such information. The prospective buyer or lessee should independently verify all dimensions, specifications, floor plans, and all information prior to the lease or purchase of the property. All offerings are subject to price change, prior sale, lease, or withdrawal from the market without prior notice.