

# For Lease

## 602 SAWYER STREET

SAWYER @ LUBBOCK NEAR DOWNTOWN



### PROPERTY OVERVIEW

#### RATE

\$27.50 PSF / YR GROSS

#### SIZE AVAILABILITY

2,545-10,861 SF

#### AMENITY DETAILS

Managed by Griffin Partners

Proximity to Downtown

On-Site Management

Garage Parking

3.7/1,000 Parking



For more information contact:

**Robert LaCoure**

rlacoure@lee-associates.com  
D 713.744.7442

**Drew Donohue**

ddonohue@lee-associates.com  
D 713.744.7498

**LEE & ASSOCIATES®**  
COMMERCIAL REAL ESTATE SERVICES

lee-associates.com





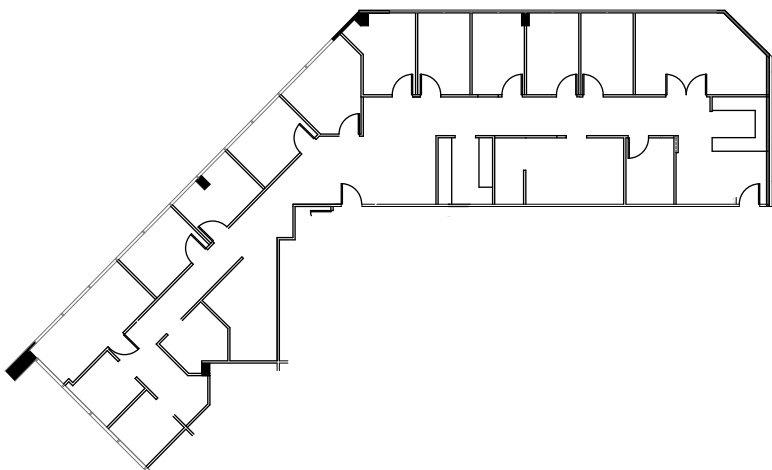
# For Lease

## 602 SAWYER STREET

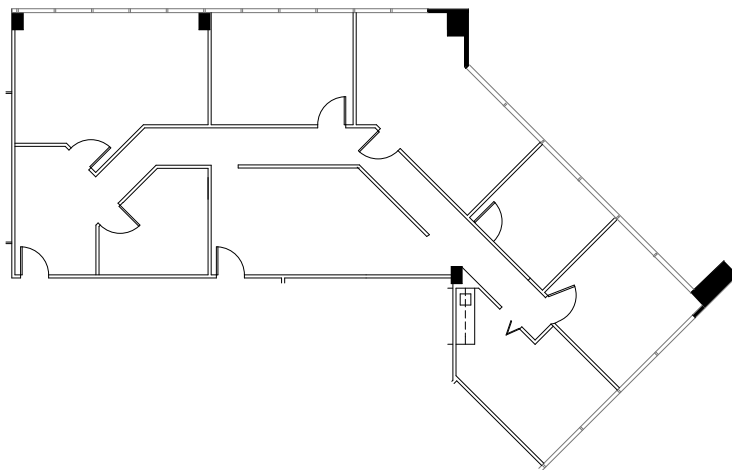
SAWYER @ LUBBOCK NEAR DOWNTOWN

### FLOOR PLANS

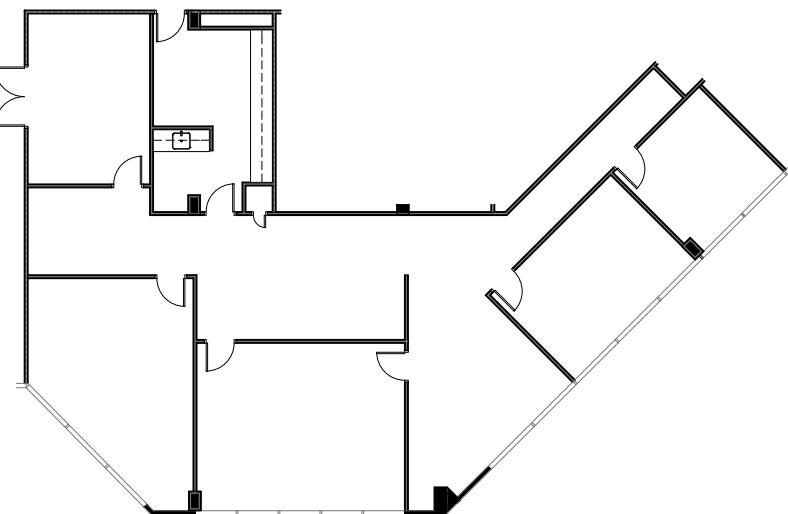
**SUITE 200 - 3,412 RSF**



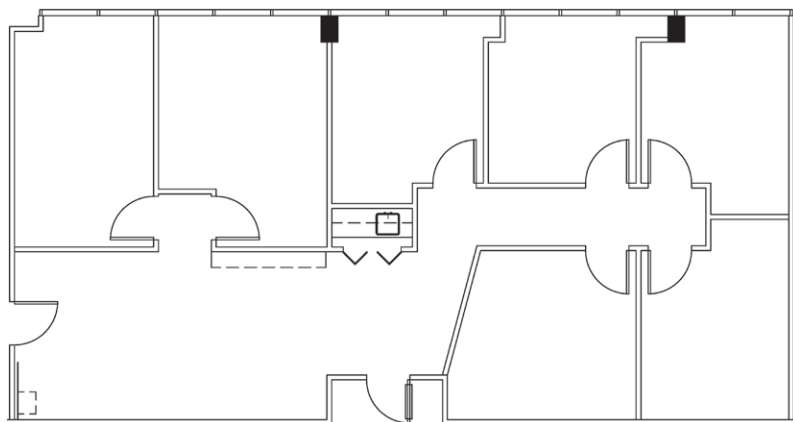
**SUITE 205 - 2,323 RSF**



**SUITE 700 - 2,543 RSF**



**SUITE 730 - 1,769 RSF**



For more information contact:

**Robert LaCoure**  
rlacoure@lee-associates.com  
D 713.744.7442

**Drew Donohue**  
ddonohue@lee-associates.com  
D 713.744.7498

lee-associates.com

