



Property Features

- 2,984 SF on 0.26 AC
- Quality Professional Office Space
- 2nd floor for potential lease income
- Full basement
- Constructed 1986, roof 6 years old
- Zoned B-1
- Most recent use law firm/mortgage loan office
- Offered at \$275,000.00



For more information, contact:

KRISTY MILTON

Associate
434 455 2308
kristy.milton@thalhimer.com

NORMAN MOON, CCIM, SIOR, CRE

First Vice President
434 455 2302
norman.moon@thalhimer.com

Coffee Crossing
6000 Boonsboro Road, Suite A
Lynchburg, VA 24503
www.thalhimer.com

INTERIOR

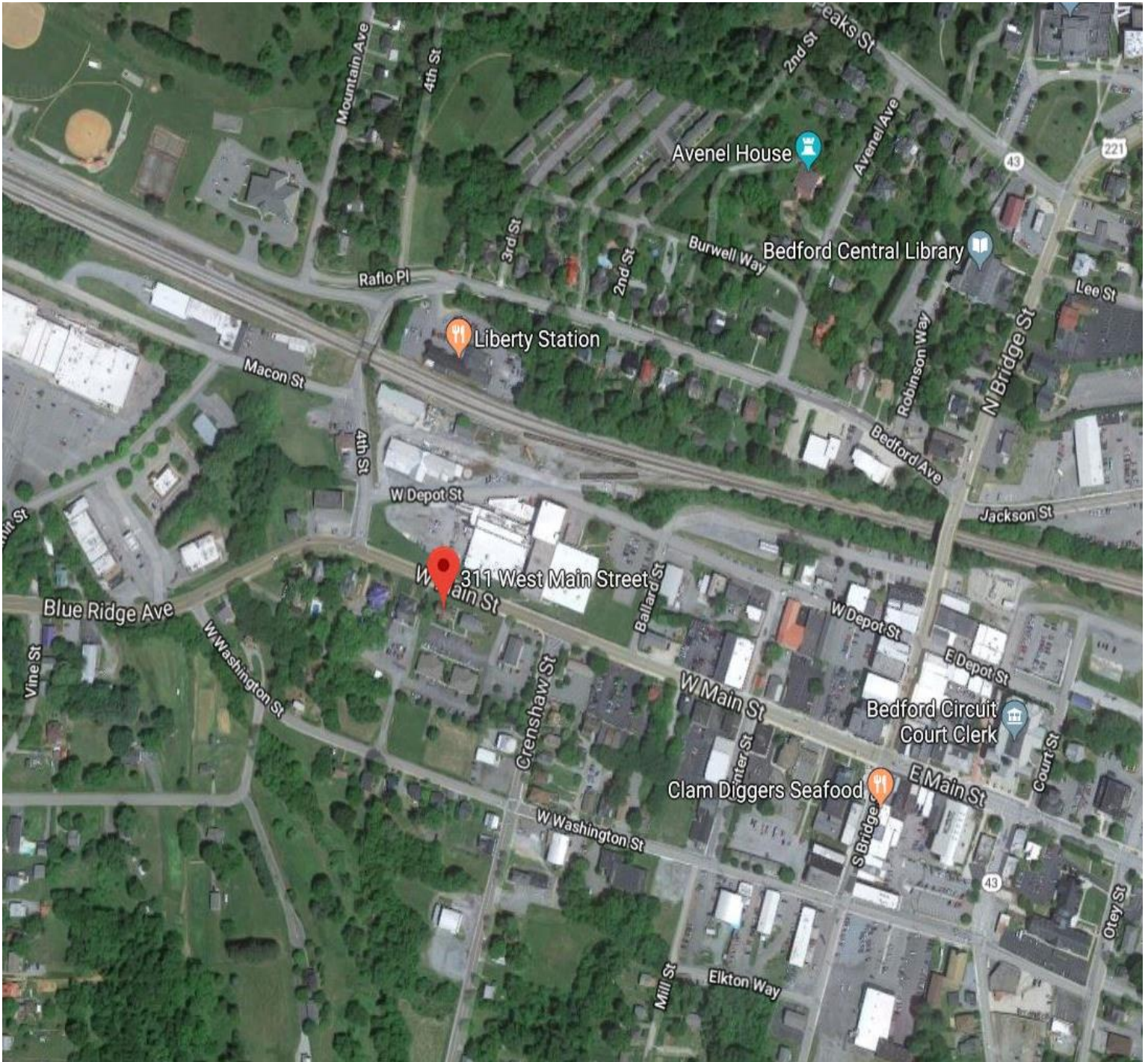


For more information, contact:

KRISTY MILTON
Associate
434 455 2308
kristy.milton@thalhimer.com

NORMAN MOON, CCIM, SIOR, CRE
First Vice President
434 455 2302
norman.moon@thalhimer.com

Coffee Crossing
6000 Boonsboro Road, Suite A
Lynchburg, VA 24503
www.thalhimer.com



For more information, contact:

KRISTY MILTON

Associate
434 455 2308
kristy.milton@thalhimer.com

NORMAN MOON, CCIM, SIOR, CRE

First Vice President
434 455 2302
norman.moon@thalhimer.com

Coffee Crossing
6000 Boonsboro Road, Suite A
Lynchburg, VA 24503
www.thalhimer.com