

FOR LEASE

1010-1060 CALLE CORDILLERA

SEAVIEW BUSINESS PARK | SAN CLEMENTE



FEATURES

- Professionally managed business park
- Quiet setting
- Minutes from the 5 freeway
- Parking 3:1,000
- Restroom in each suite
- Close to retail/food amenities
- Good truck/delivery access
- Coffee bar with sink in each unit
- 100 amp / 3 phase power (verify)
- Functional office/warehouse layouts
- 10x10 rollup doors
- 14' warehouse ceiling clearance



GUY LAFERRARA <i>SV President</i> BRE# 01012355	BROCK STRYKER <i>Sr. Associate</i> BRE# 01928271	TRAVIS BARNETT <i>Associate</i> BRE# 02069500
949.790.3115 glaferrara@leeirvine.com	949.790.3131 bstryker@leeirvine.com	949.790.3145 tbarnett@leeirvine.com

FOR LEASE

1010-1060 CALLE CORDILLERA

SEAVIEW BUSINESS PARK | SAN CLEMENTE

AVAILABILITY

1010 CALLE CORDILLERA

UNIT	RSF	LEASE RATE	COMMENTS
			100% LEASED

1020 CALLE CORDILLERA

UNIT	RSF	LEASE RATE	COMMENTS
			100% LEASED

1030 CALLE CORDILLERA

UNIT	RSF	LEASE RATE	COMMENTS
			100% LEASED

1040 CALLE CORDILLERA

UNIT	RSF	LEASE RATE	COMMENTS
			100% LEASED

1050 CALLE CORDILLERA

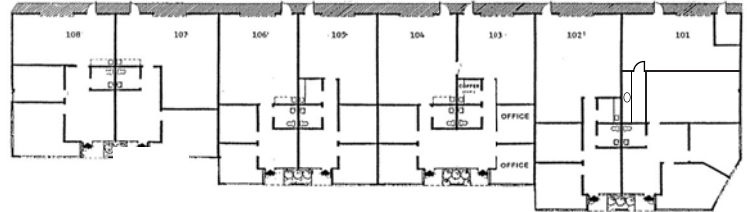
UNIT	RSF	LEASE RATE	COMMENTS
105	1,080	\$1.60/SF	Reception, Private Office, Restroom, Coffee Bar, Warehouse and Roll-Up Door

1060 CALLE CORDILLERA

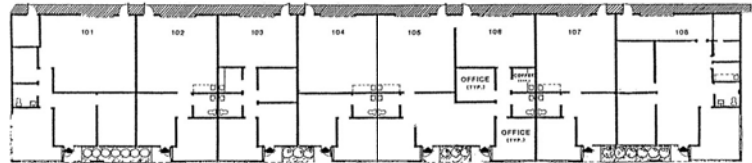
UNIT	RSF	LEASE RATE	COMMENTS
			100% LEASED

COMMON AREA MAINTENANCE FEE OF \$0.12 PSF

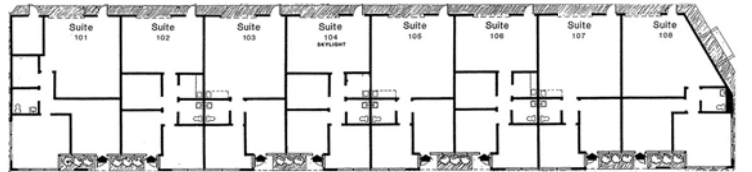
BUILDING 1010



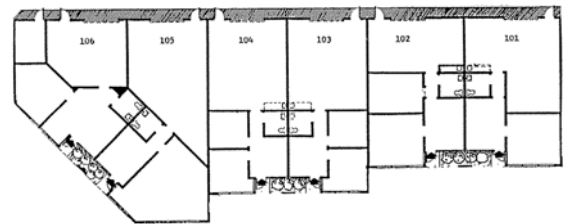
BUILDING 1020



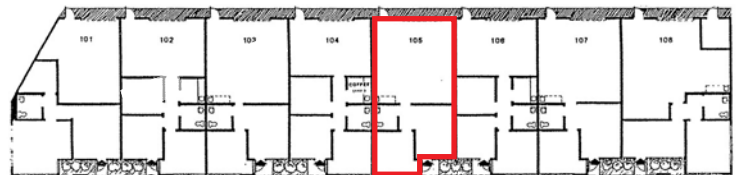
BUILDING 1030



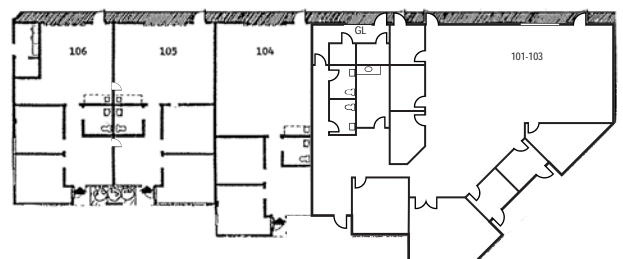
BUILDING 1040



BUILDING 1050



BUILDING 1060



FOR LEASE

1010-1060 CALLE CORDILLERA

SEAVIEW BUSINESS PARK | SAN CLEMENTE

1.5 MILES
TO 5
FREEWAY



6 MILES
TO ORTEGA
HIGHWAY



**LEE &
ASSOCIATES**

COMMERCIAL REAL ESTATE SERVICES

GUY LAFERRARA

Sr. President | BRE# 01012355

949.790.3115

glaferarra@leeirvine.com

BROCK STRYKER

Sr. Associate | BRE# 01928271

949.790.3131

bstryker@leeirvine.com

TRAVIS BARNETT

Associate | BRE# 02069500

949.790.3145

tbarnett@leeirvine.com