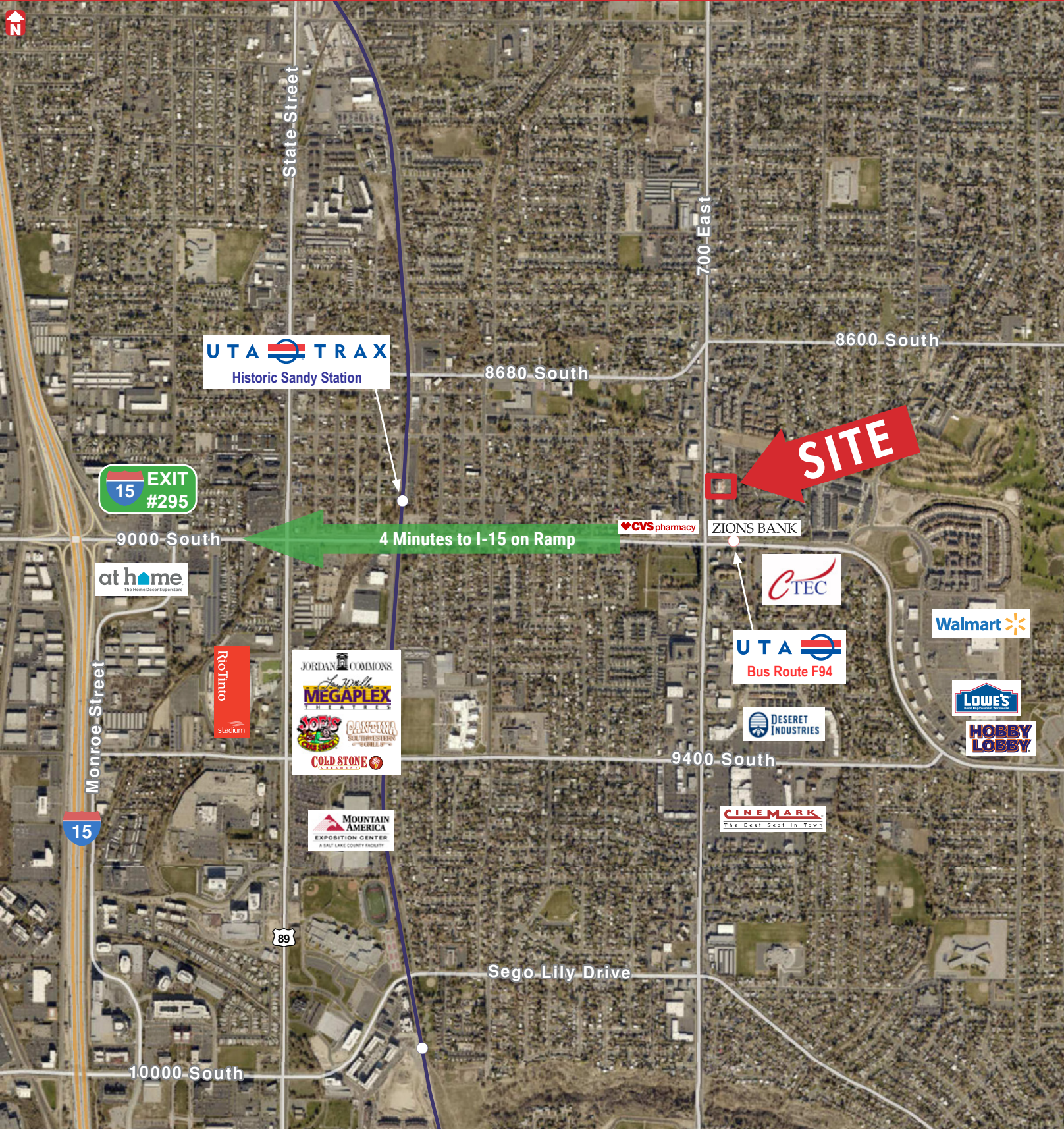


KENNER BUILDING

8899 South 700 East, Sandy, Utah 84070

KENNER BUILDING

8899 South 700 East, Sandy, Utah 84070



FOR LEASE

\$21.50/SF FULL SERVICE

PROPERTY FEATURES

- Suite 125: 2,465 RSF
- Suite 130: 1,500 RSF
- Suite 200: 4,000 RSF
- Free Parking – 4.5/1,000 SF
- Numerous Dining and Hotels Nearby
- Suites Ready for Immediate Occupancy
- Open Floor Plan with New Improvements

FOR MORE
INFORMATION
CONTACT

COLLIN PERKINS, MBA
direct 801.578.5575
collin.perkins@ngkf.com

DEREK SAWAYA
direct 801.746.4730
derek.sawaya@ngkf.com

CASEY MILLS, CCIM, SIOR
direct 801.578.5556
casey.mills@ngkf.com



376 East 400 South, Suite 120 | Salt Lake City, Utah 84111 | 801.578.5555 | www.ngacres.com

This document has been prepared by Newmark Knight Frank for advertising and general information purposes only. While the information contained herein has been obtained from what are believed to be reliable sources, the same has not been verified for accuracy or completeness. Newmark Knight Frank accepts no responsibility or liability for the information contained in this document. Any interested party should conduct an independent investigation to verify the information contained herein.



376 East 400 South, Suite 120 | Salt Lake City, Utah 84111 | 801.578.5555 | www.ngacres.com

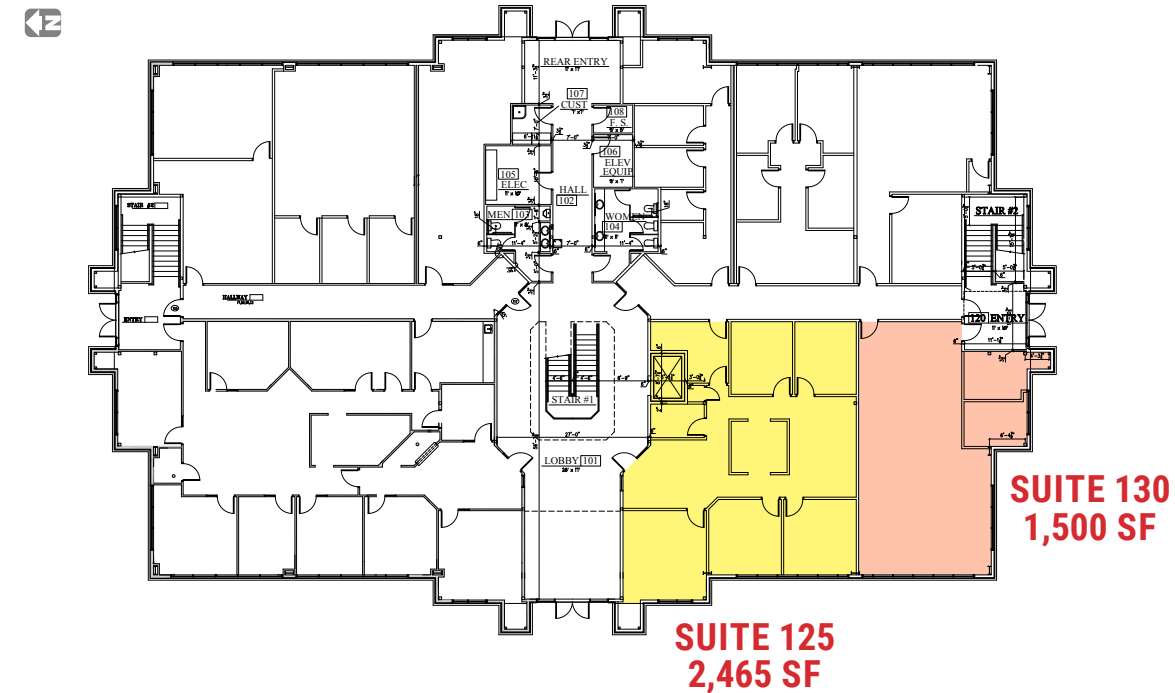
This document has been prepared by Newmark Knight Frank for advertising and general information purposes only. While the information contained herein has been obtained from what are believed to be reliable sources, the same has not been verified for accuracy or completeness. Newmark Knight Frank accepts no responsibility or liability for the information contained in this document. Any interested party should conduct an independent investigation to verify the information contained herein.

KENNER BUILDING

8899 South 700 East, Sandy, Utah 84070



FIRST FLOOR



SECOND FLOOR

