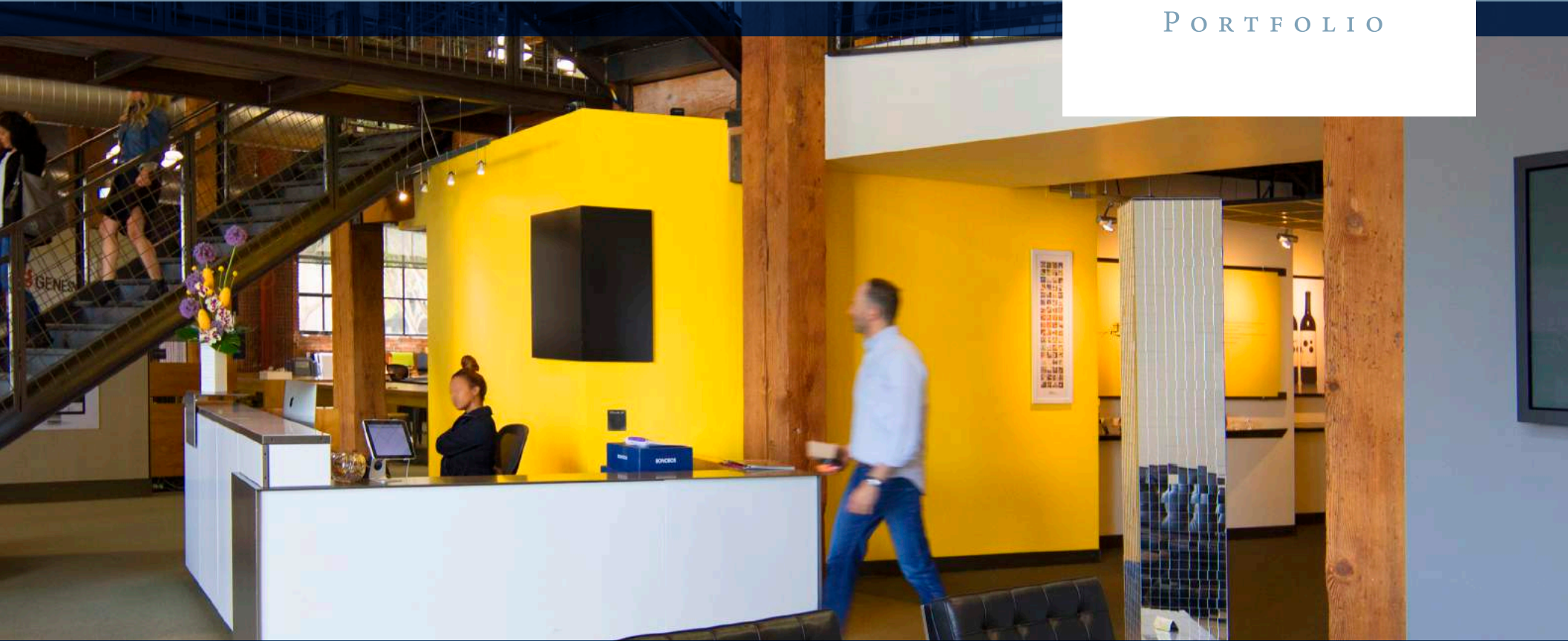


CREATIVE BUSINESS ENVIRONMENTS ON SAN FRANCISCO'S HISTORIC WATERFRONT



NORTH WATERFRONT
PORTFOLIO



Brick and Timber Creative Space



Jones Lang LaSalle Brokerage, Inc. Real Estate License #: 01856260



1010 Battery/50 Green

32,912 SF

An elegantly restored brick and timber building. Large first floor windows provide abundant natural light.

No space available



1001 Front

53,099 SF office / 19,428 SF storage

This two-story brick building has beautiful wood floors and raised ceilings on the second floor adding to the natural light.

No space available

NORTH WATERFRONT PORTFOLIO

The North Waterfront Portfolio's historic set of buildings—some even recognized by the National Historic Registry—have been artfully renovated to class A status and are conveniently located along the north waterfront in San Francisco. They blend historic charm with modern, creative interiors. Each of the buildings create a unique environment where your company can grow.

The “Barbary Coast”, the original coast line of San Francisco, is now full of modern amenities, including top restaurants, shopping, and parking. Seconds away from the financial district, tenants have easy access to San Francisco businesses without sacrificing their environment.



One Lombard

130,244 SF

Formerly an ice and cold storage building as well as a warehouse. Designed by notable architect, Willis Polk.

No space available

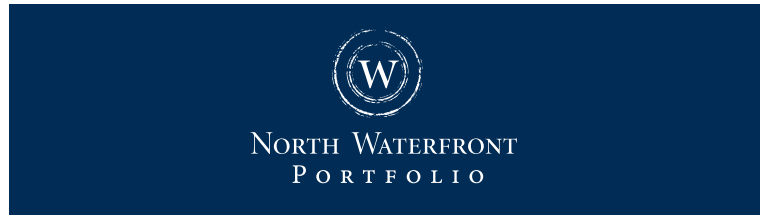
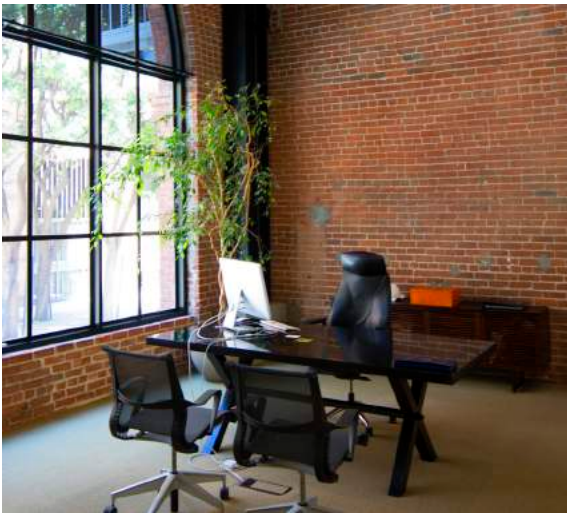
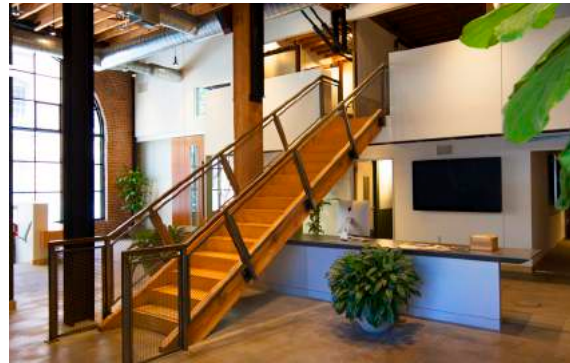
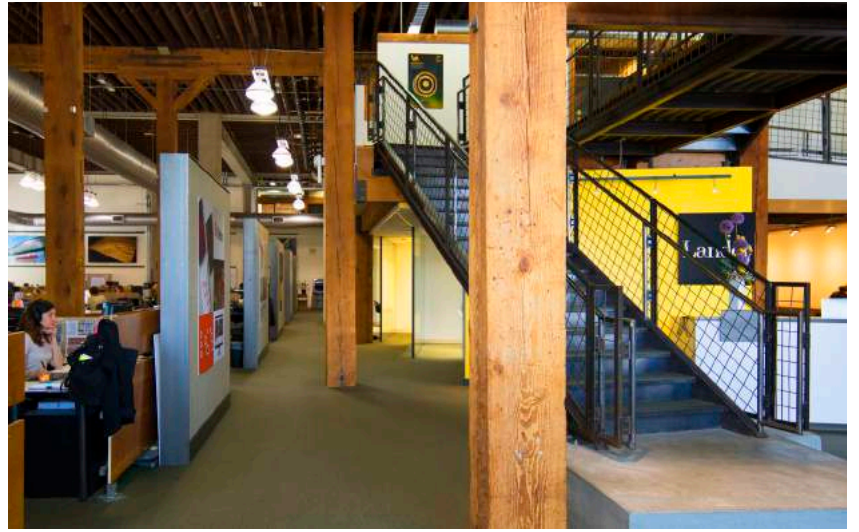
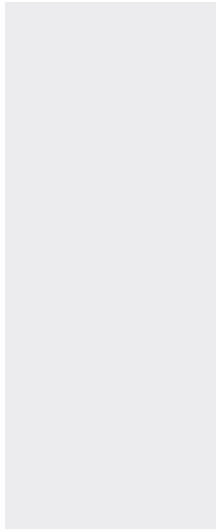


1050 Battery

31,195 SF

An impressive 3 story masonry building that once housed Armour Meats, complete with a finished basement and test kitchen

Suite 150 – 3,396 RSF available now





NORTH WATERFRONT
PORTFOLIO

3,396 rsf

- Available now
- Creative space
- Ample natural light
- Exposed brick and timber high ceilings
- 4 private offices
- 1 conference
- 1 storage room
- Kitchen
- Signage at street entrance
- Convenient shuttle to BART and MUNI

WES POWELL

415.395.4901

wesley.powell@am.jll.com

License #: 1702003

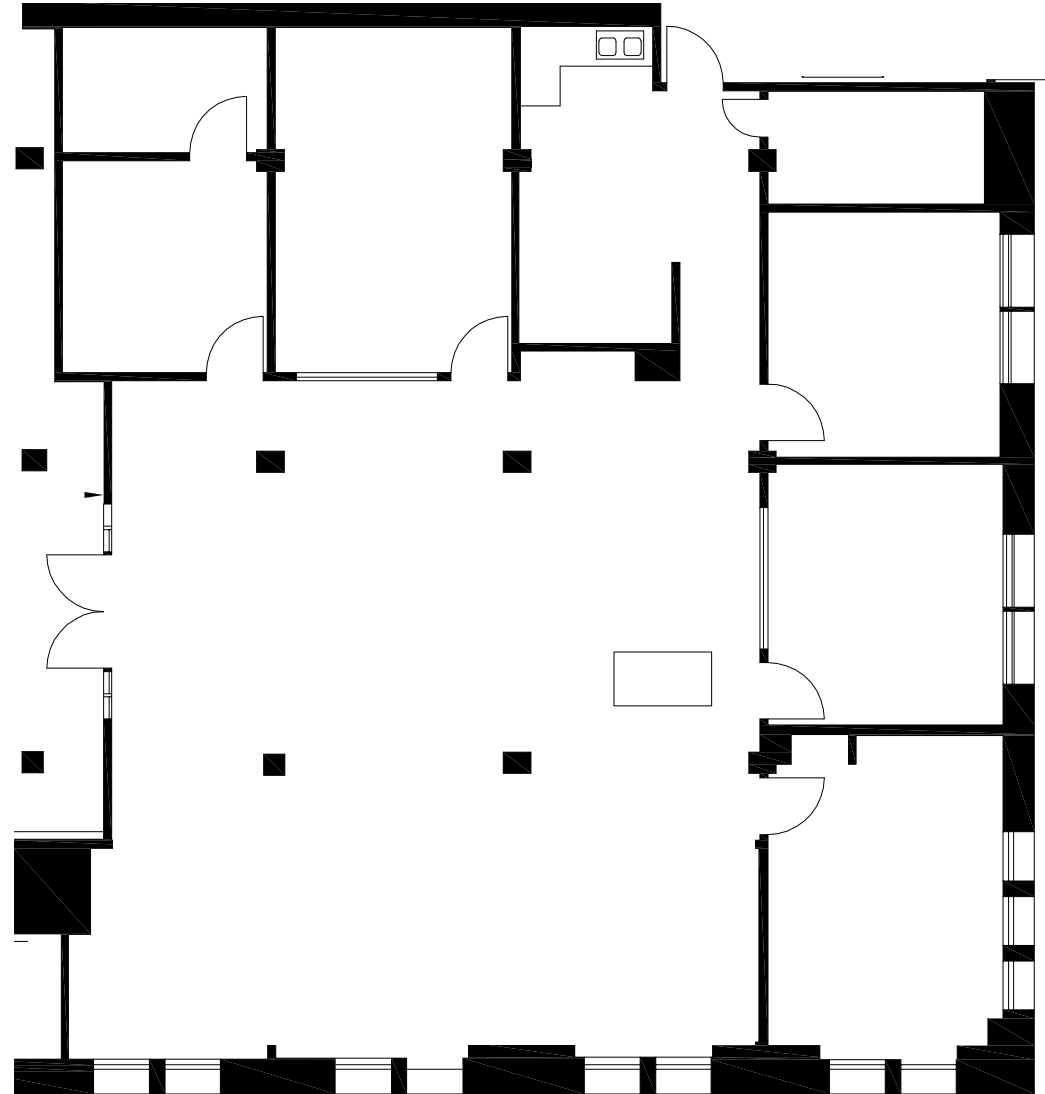
CHRISTOPHER HOLLAND

415.354.6917

christopher.holland@am.jll.com

License #: 147598

1050 BATTERY ST, SUITE 150
SAN FRANCISCO, CA



CREATIVE BUSINESS ENVIRONMENTS ON SAN FRANCISCO'S HISTORIC WATERFRONT.



**NORTH WATERFRONT
PORTFOLIO**

WES POWELL

415.395.4901

wesley.powell@am.jll.com

License #: 1702003

CHRISTOPHER HOLLAND

415.354.6917

christopher.holland@am.jll.com

License #: 147598



Jones Lang LaSalle Brokerage, Inc. Real Estate License #: 01856260

©2019 Jones Lang LaSalle IP, Inc. All rights reserved. All information contained herein is from sources deemed reliable; however, no representation or warranty is made to the accuracy thereof.



NORTH WATERFRONT
PORTFOLIO

WES POWELL

415.395.4901

wesley.powell@am.jll.com

License #: 1702003

CHRISTOPHER HOLLAND

415.354.6917

christopher.holland@am.jll.com

License #: 147598



Jones Lang LaSalle Brokerage, Inc. Real Estate License #: 01856260

©2019 Jones Lang LaSalle IP, Inc. All rights reserved. All information contained herein is from sources deemed reliable; however, no representation or warranty is made to the accuracy thereof.