

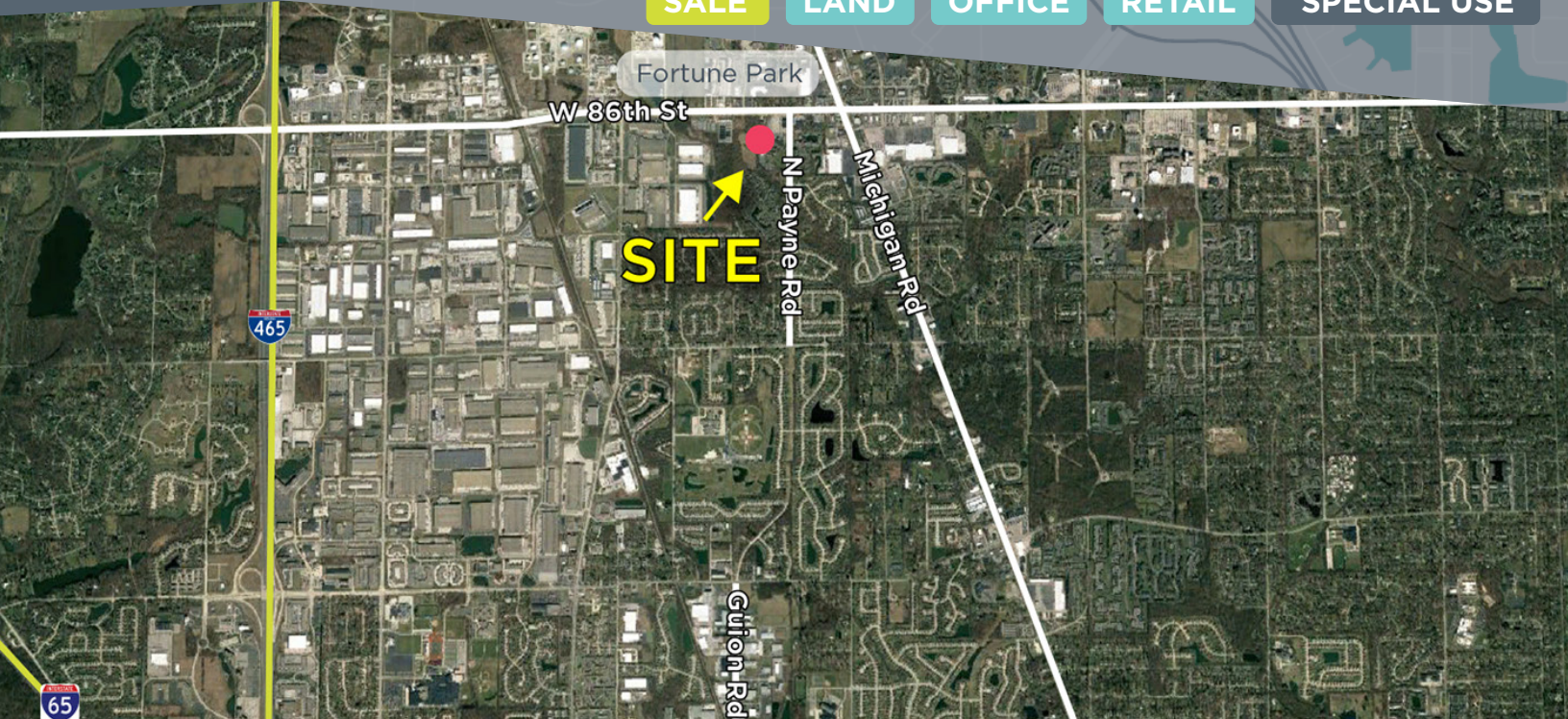
SALE

LAND

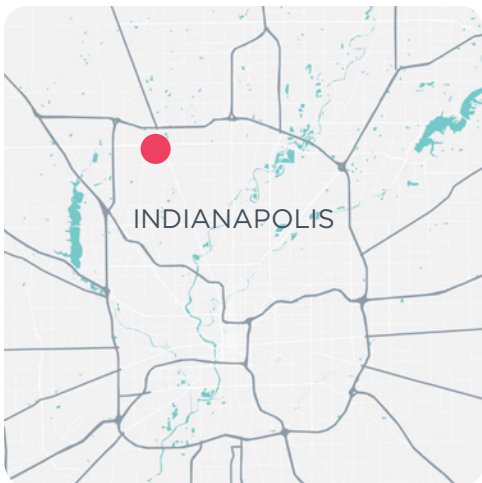
OFFICE

RETAIL

SPECIAL USE



34.734 ACRES WITH OVER 600' FRONTAGE ON WEST 86TH STREET



AVAILABLE ACRES

34.734 AC

SALE PRICE

\$2,500,000

Irregular shaped retail/office parcel on West 86th Street is priced to sell at \$2.5 million (\$71,500 acre).

- + Signalized access at West 86th Street and Guion Road
- + Mixed use development potential
- + 600'+ frontage on West 86th Street
- + Utilities at site

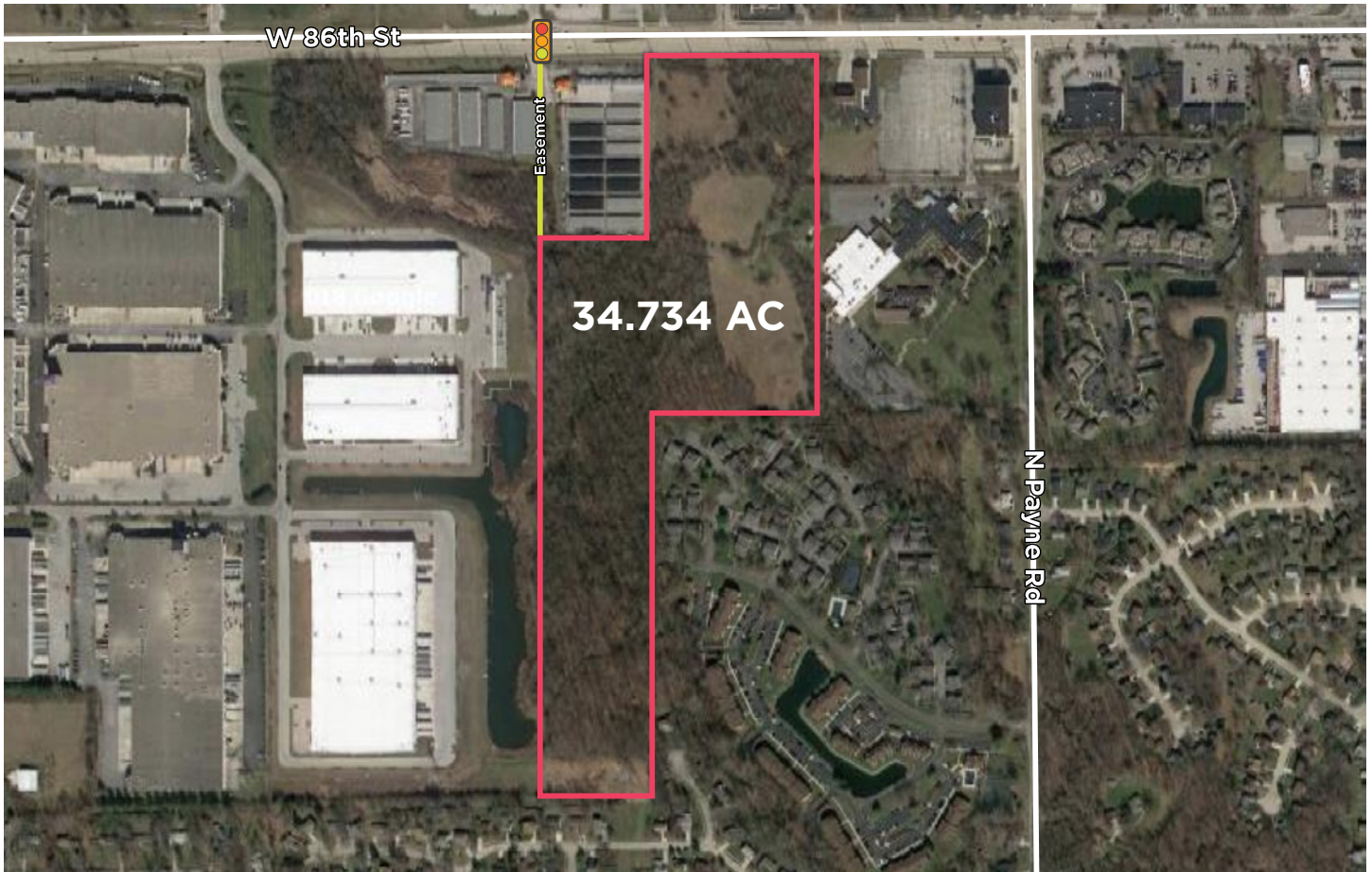
ROSS RELLER

Senior Vice President

☎ 317.663.6552

☎ 317.414.1101

ross.reller@rcre.com



DEMOGRAPHICS*

	1 MILE	3 MILES	5 MILES	10 MILES
Population	6,848	59,509	143,334	593,321
Households	3,496	26,157	61,417	251,999
Average HH Income	\$61,638	\$80,307	\$104,467	\$90,086
Median Age	36.3	35.2	36.6	35.8

*SitesUSA 2018 Estimated

ROSS RELLER
 Senior Vice President
 ☎ 317.663.6552
 📠 317.414.1101
 ross.reller@rcre.com

RESOURCE

rcre.com

in 🐦 f 📷 📌 #growIndiana

The information contained herein was obtained from sources we consider reliable. We cannot be responsible for errors, omissions, prior sale or lease, withdrawal from the market or change in price. Seller and broker make no representation as to the environmental condition of the property and recommend the lessee's/purchaser's independent investigation. Ver. 19.02.20-1324

9339 Priority Way West Drive
 Suite 120
 Indianapolis, IN 46240
 317.663.6000